

# Wall Series - CB Non-Refrigerated Crusty Bread Cases

## Models

CB56

CB74



## Non-refrigerated upright self-service bread merchandisers

### Standard Features

- White interior
- Painted exterior
- Curved header
- No end panels (specify ends per lineup)
- Open reach-in front
- Flat front panel
- Solid upper rear panel
- Non-refrigerated lower rear storage without doors
- Lighted slat rack shelves
- 12" straight blade power cord
- Base with package ledge
- ETL certified to CAN/CSA 22.2, conforms to UL 65

### Options

- Black interior
- Laminated exterior
- Square header
- Full w/mirror, cutaway or case to case glass end panels
- Angled front panel
- Mirror back panel
- Lighted Oak slat rack shelves
- 1" bumper on front & ends

ONE PART PASSION, TWO PARTS SCIENCE

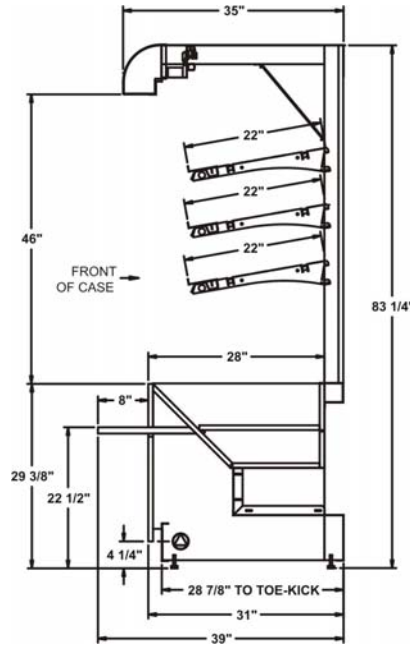


# Specifications - CB Cases

Model	L*xDxH
CB56	56"x39"x83-1/4"
CB74	74"x39"x83-1/4"

\*without 1" end panels

## STANDARD Straight Base



### IMPORTANT NOTES

40" minimum door entry clearance required (without shipping skid).

Units are supplied with levelers which must be adjusted during installation to ensure the unit is level and plumb.

Dimensions reflect levelers extended 1-1/4".

### INTENDED ENVIRONMENT

Designed to operate in ambient conditions of 75°F with 55% relative humidity.

Integrated ambient product temperature

### INTENDED USE

Packaged non-refrigerated products.

INFORMATION IS SUBJECT TO CHANGE WITHOUT NOTICE.

