

CO Series - CO Self-Service Cases

Models

CO36
CO47
CO59
CO71

Applications

- Forced air refrigeration
- Medium temperature integrated average 41°F
- Multiple shelves
- For refrigerated packaged items



Refrigerated self-service grab & go cases for packaged products.

Standard Features

- Black interior
- Laminated exterior
- Full end panels with mirror interior
- Open reach-in front
- Galvanized solid rear back panel
- Non-lighted solid shelves
- T-8 top light
- Electrical leads
- Levelers
- Remote refrigeration with TXV
- Choice of 48", 60" or 78" heights
- ETL certified to CAN/CSA 22.2, conforms to UL 471 & NSF 7

Options

- White or stainless steel interior
- Stainless steel exterior
- Cutaway end panels or no end panels for same case to case connection
- Stainless steel or black solid back
- Rear swinging doors
- T-8 or LED lighted shelves
- Breeze™ self-contained refrigeration with 6' power cord - specify levelers, casters or 6"H legs
- EnergyWise energy-efficient refrigeration
- Whisper Cool compressor blanket
- Breeze-E Type II refrigeration
- Clean Sweep® condenser coil cleaner
- Night curtain, removable or roll-down locking security covers
- Price tag molding

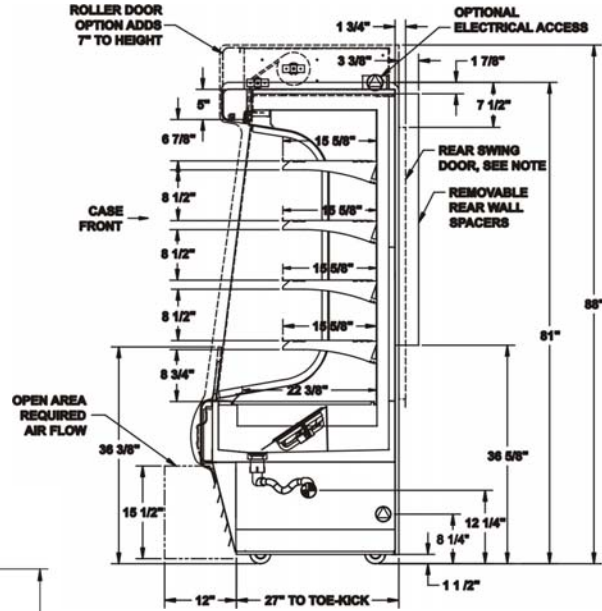
ONE PART PASSION, TWO PARTS SCIENCE



Specifications - CO Cases

Model	LxDxH
CO36	36-1/4"x33-1/4"x81"
CO47	47-1/4"x33-1/4"x81"
CO59	59-1/4"x33-1/4"x81"
CO71	71-1/4"x33-1/4"x81"

Standard



IMPORTANT NOTES

Units are supplied with levelers which must be adjusted during installation to ensure the unit is level and plumb.

Dimensions reflect levelers extended 1-1/4".

INTENDED ENVIRONMENT

Designed to operate in ambient conditions of 75°F with 55% relative humidity.

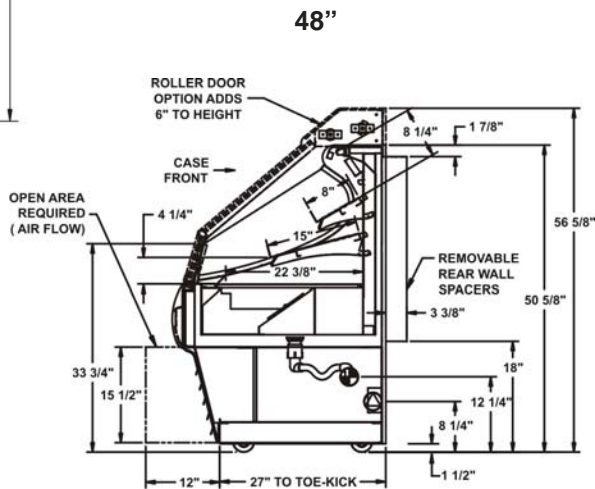
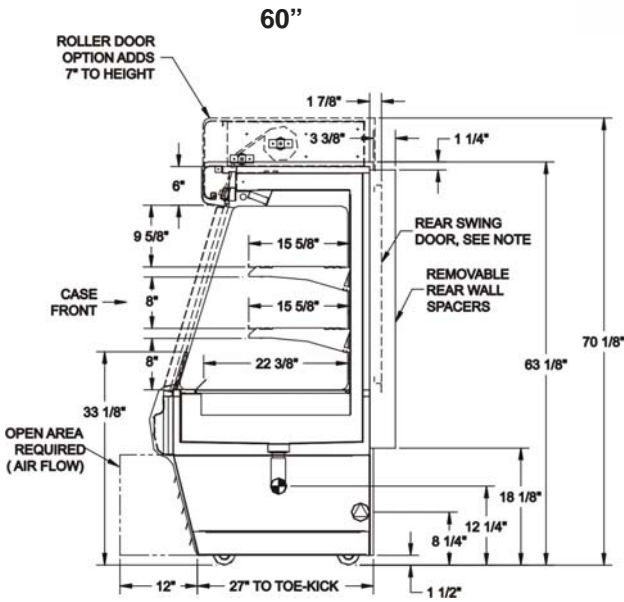
Integrated average product temperature of 41°F.

INTENDED USE

Unpackaged refrigerated products.

For more information on any of our products or services please visit us on the web at:

www.structuralconcepts.com



INFORMATION IS SUBJECT TO CHANGE WITHOUT NOTICE.

