

DP Series - DPR Self-Service Modular Inline Cases

Models

DP58R
DP610R
DP812R
DP1016R



Inline module with refrigerated drop in pans.

Applications

- One-sided module with cold wells for self-service pans
- Forced air over & under pans
- Choice of 8, 10, 12, & 16 half pan sizes
- Angled pans
- Medium temperature integrated average 41°F
- Refrigerated pan modules designed to be used with heated pan & soup module

Standard Features

- Stainless steel well assembly
- Pans displayed at an angle with cold air blowing above & below each pan
- Mirror back panel
- Glass top, sides & sneeze guard
- Refrigerated storage drawer in base
- Laminated exterior panels
- Solid surface package ledge
- Remote refrigeration with TXV
- ETL certified to CAN/CSA 22.2, conforms to UL 471 & NSF 7

Options

- Choice of solid surface finishes

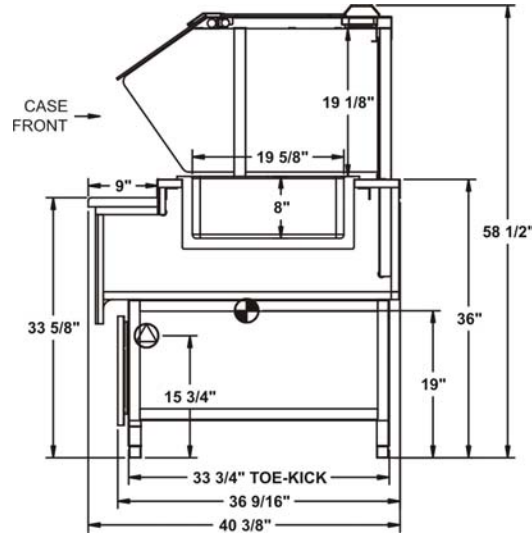
ONE PART PASSION, TWO PARTS SCIENCE



Specifications - DPR Cases

| Model | LxDxH |
|---------|---------------------|
| DP58R | 68"x40-3/8"x58-1/2 |
| DP610R | 81"x40-3/8"x58-1/2 |
| DP812R | 94"x40-3/8"x58-1/2 |
| DP1016R | 120"x40-3/8"x58-1/2 |

Standard



IMPORTANT NOTES

INTENDED ENVIRONMENT

Designed to operate in ambient conditions of 75°F with 55% relative humidity.

Integrated average product temperature of 41°F.

INTENDED USE

Unpackaged refrigerated products.

INFORMATION IS SUBJECT TO CHANGE WITHOUT NOTICE.

