

# G Series - GLBS Refrigerated Service Cases

## Models

GLBS3  
GLBS4  
GLBS6  
GLBS8  
GLBS12  
GLBSX2  
GLBSX4  
GLBSX9  
GLBSN2  
GLBSN4  
GLBSN9

## Applications

- Forced air refrigeration
- Medium temperature integrated average of 41°F
- Single deck display area with work ledge
- For refrigerated bakery items
- Corrosion resistant stainless steel tub & fan shroud
- Designed to be used with GLBSS & GLDS & GLDSS models



*Service low capacity merchandisers for bakery items*

## Standard Features

- Black interior
- Painted exterior
- Black trim
- No end panels (specify ends per lineup)
- Curved single pane lift-up front glass
- Black Sanalite® rear work ledge
- Removable acrylic rear sliding doors
- Double row of T-8 top lights
- Electrical leads
- Energy-efficient evaporator fans
- Remote refrigeration with TXV
- ETL certified to CAN/CSA 22.2, conforms to UL 471 & NSF 7
- Meets DOE 2012 Energy Standards

## Options

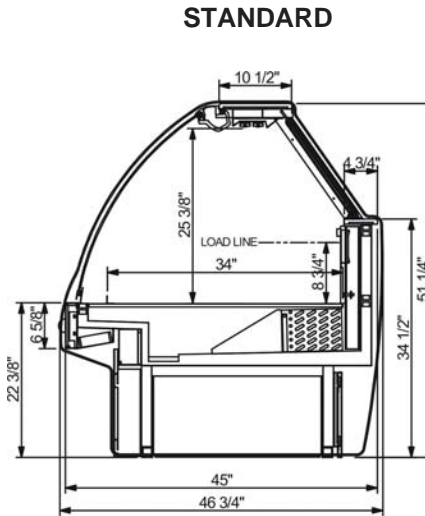
- White or stainless steel interior
- Stainless steel or laminated exterior
- Silver trim
- Full w/mirror, cutaway or case to case glass end panels.
- Straight single pane lift-up front glass
- White Sanalite®, stainless steel, quartz or Corian rear work ledge
- Open upper rear
- 2"H full depth display risers
- Coated evaporator coil
- LED lights
- 1" bumper on front
- Price tag molding on deck
- Breeze self-contained refrigeration with 6' power cord - specify levelers, casters or 6"H legs
- Clean Sweep® condenser coil cleaner
- Scale stand with receptacle
- Front glass & rear door locks
- Non-refrigerated for ambient display

ONE PART PASSION, TWO PARTS SCIENCE



# Specifications - GLBS Cases

Model	L*xDxH
GLBS3	36-3/4"x46-3/4"x51-1/4"
GLBS4	48-3/4"x46-3/4"x51-1/4"
GLBS6	73-1/8"x46-3/4"x51-1/4"
GLBS8	97-1/2"x46-3/4"x51-1/4"
GLBS12	146-1/4"x46-3/4"x51-1/4"
GLBSX2	47-1/4"x46-3/4"x51-1/4"
GLBSX4	39-1/8"x46-3/4"x51-1/4"
GLBSX9	72-1/4"x46-3/4"x51-1/4"
GLBSN2	39-3/4"x46-3/4"x51-1/4"
GLBSN4	55-1/2"x46-3/4"x51-1/4"
GLBSN9	102-1/2"x46-3/4"x51-1/4"



## IMPORTANT NOTES

Units must be shimmed during installation to ensure the unit is level and plumb.

## INTENDED ENVIRONMENT

Designed to operate in ambient conditions of 75°F with 55% relative humidity.

Integrated average product temperature of 41°F.

## INTENDED USE

Unpackaged refrigerated products.

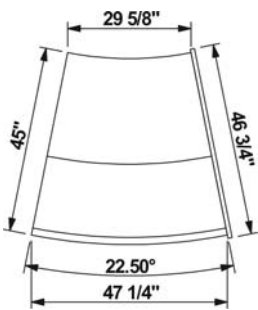
For more information on any of our products or services please visit us on the web at:

[www.structuralconcepts.com](http://www.structuralconcepts.com)

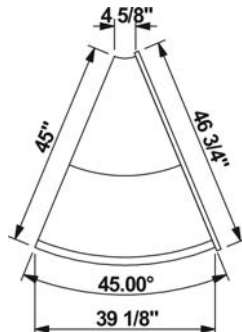
\*without 1" end panels

GLBSX models = convex/outside curve  
GLBSN models = concave/inside curve

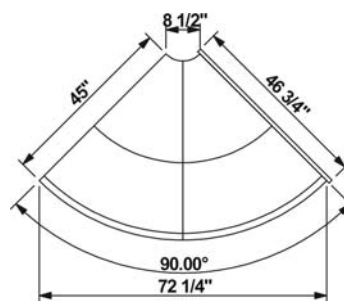
GLBSX2 PLAN VIEW



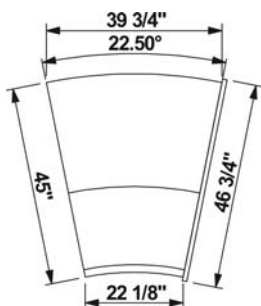
GLBSX4 PLAN VIEW



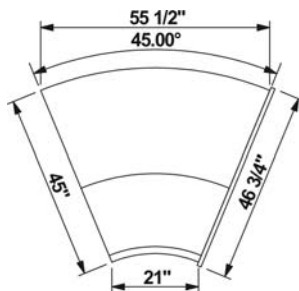
GLBSX9 PLAN VIEW



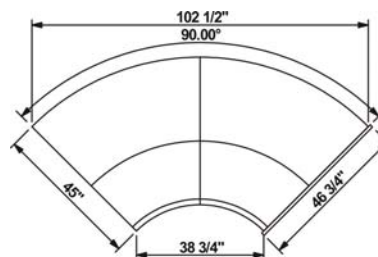
GLBSN2 PLAN VIEW



GLBSN4 PLAN VIEW



GLBSN9 PLAN VIEW



INFORMATION IS SUBJECT TO CHANGE WITHOUT NOTICE.

