

G Series - GP Combination Preparation Cases



Models

GP4
GP6
GP8
GP12

Applications

- Forced air refrigeration
- Medium temperature integrated average of 41° F
- Refrigerated condiment pan support rails
- Designed to be used with GC, GHSSD, GHSB & GHSSB models

Refrigerated combination preparation display merchandisers

Standard Features

- Black interior
- Painted exterior
- Black trim & sneeze guard posts
- No end panels (specify ends per lineup)
- Non-refrigerated rear storage w/out doors.
- Non-lighted solid shelf in self-service base
- T-8 top & nose lights in self-service base
- Energy-efficient evaporator fans
- Sanalite® rear work surface (stepped down from condiment pans).
- Electrical leads
- Remote refrigeration with TXV
- ETL Certified to CAN/CSA 22.2, conforms to UL 471 & NSF 7
- Meets DOE 2012 Energy Standards

Options

- White or stainless steel interior
- Stainless steel or laminated exterior
- Silver trim & sneeze guard posts
- Full w/mirror or case to case glass end panels.
- Stainless steel rear work surface
- Additional non-lighted shelf for base
- 1" bumper on front
- Breeze™ self-contained refrigeration with 6' power cord - specify levelers, casters or 6"H legs
- Non-refrigerated rear storage with or with doors
- Refrigerated rear storage with doors
- Clean Sweep® condenser coil cleaner
- Night curtain & wire security cover for self-service base
- Heated pan surface in lieu of refrigerated condiment pans
- Rear work surface level w/condiment pans - specify Sanalite® or stainless steel

* Increases height of case by approximately 4"

ONE PART PASSION, TWO PARTS SCIENCE



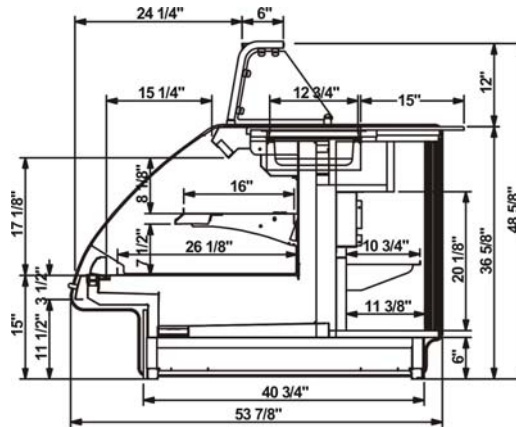
Specifications - GP Cases

STANDARD

Model	L*xDxH**
GP4	48-3/4"x50-3/8"x49-1/4"
GP6	73-3/4"x50-3/8"x49-1/4"
GP8	97-1/2"x50-3/8"x49-1/4"
G12	146-1/4"x50-3/8"x49-1/4"

*without 1" end panels

**Overall height from floor to top of sneeze guard



IMPORTANT NOTES

Units must be shimmed during installation to ensure the unit is level and plumb.

Pans are not supplied with unit.

INTENDED ENVIRONMENT

Designed to operate in ambient conditions of 75°F with 55% relative humidity.

Integrated average product temperature of 41°F.

INTENDED USE

Unpackaged/package refrigerated products.

For more information on any of our products or services please visit us on the web at:

www.structuralconcepts.com

INFORMATION IS SUBJECT TO CHANGE WITHOUT NOTICE.

