

# HM Series - HMBC Narrow Depth Combination Refrigerated Cases



## Models

HMBC2  
HMBC3  
HMBC4  
HMBC5  
HMBC6

## Applications

- Narrow depth combo cases fit through standard doors.
- Forced air refrigeration
- Medium temperature integrated average 41°F
- Upper display convertible from refrigerated to non-refrigerated at any time.

## Combination refrigerated service / self-service merchandisers

### Standard Features

- Black interior
- Laminated exterior
- Black trim
- Single cutaway end panels
- Curved double pane lift-up front glass
- Non-divided upper display (HMBC2-3)
- Divided upper display (HMBC4-6)
- Open reach-in lower display
- White rear exterior panels
- Clear glass upper rear sliding doors (swinging on HMBC2)
- Solid lower back panel
- Lighted clear glass shelf in upper display
- T-8 top & shelf lights
- Electrical leads
- Levelers
- Remote refrigeration with TXV
- ETL certified to CAN/CSA 22.2, conforms to UL 471 & NSF 7

### Options

- White or stainless steel interior
- Stainless steel exterior
- Silver trim
- Double cutaway end panels
- Black or stainless steel rear exterior panels
- Upper reflective rear sliding doors (swinging door on HMBC2)
- Lower rear sliding doors (swinging door on HMBC2)
- Lighted smoked glass shelf in upper display
- Additional shelf for upper display
- 1" bumper on front & ends
- Breeze™ self-contained refrigeration with 6' power cord - specify levelers, casters or 6"H legs
- Energy-efficient evaporator fans
- 2" & 4"H full depth display risers
- Bottle slide or angled deck in lower display
- Clean Sweep® condenser coil cleaner
- Night curtain or wire security cover
- Rear wrapping board
- Rear door lock

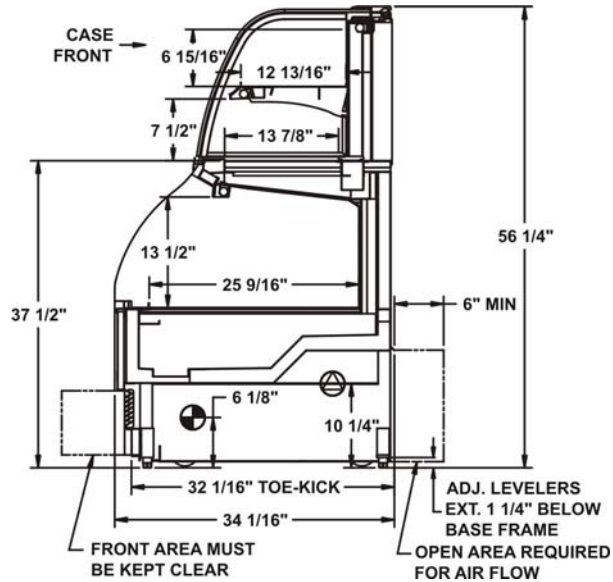
ONE PART PASSION, TWO PARTS SCIENCE



# Specifications - HMBC Cases

| Model | LxDsxH                     |
|-------|----------------------------|
| HMBC2 | 26-7/8"x34-1/16"x56-1/4"   |
| HMBC3 | 38-7/8"x34-1/16"x56-1/4"   |
| HMBC4 | 50-7/8"x34-1/16"x56-1/4"   |
| HMBC5 | 62-11/16"x34-1/16"x56-1/4" |
| HMBC6 | 75-1/4"x34-1/16"x56-1/4"   |

## STANDARD



### IMPORTANT NOTES

Compressor air rear intake, front discharge. Toe kick cannot be blocked.

Units are supplied with levelers which must be adjusted during installation to ensure the unit is level and plumb.

Dimensions reflect levelers extended 1-1/4".

### INTENDED ENVIRONMENT

Designed to operate in ambient conditions of 75°F with 55% relative humidity.

Integrated average product temperature of 41°F.

### INTENDED USE

Unpackaged/package refrigerated products.

For more information on any of our products or services please visit us on the web at:

[www.structuralconcepts.com](http://www.structuralconcepts.com)

INFORMATION IS SUBJECT TO CHANGE WITHOUT NOTICE.

