

HM Series - HMG Narrow Depth Service Cases



Models

HMG26
HMG39
HMG51
HMG63
HMG75

Applications

- Narrow depth service display cases fit through standard doors.
- Forced air refrigeration
- Medium temperature integrated average of 41°F
- For unpackaged bakery products

Service merchandisers for bakery items

Standard Features

- Black interior
- Laminated exterior
- Black trim
- Full end panels with mirror interior
- Flat front panel
- Clear glass rear sliding doors (swinging on 26" model)
- Lighted glass shelves on refrigerated models; wire racks on non-refrigerated models
- White rear exterior panels
- T-8 top & shelf lights
- Electrical leads
- Levelers
- Remote refrigeration with TXV
- Double pane lift-up front glass on refrigerated models; single pane lift-up front glass on non-refrigerated models
- ETL certified to CAN/CSA 22.2, conforms to UL 65, UL 471, NSF 2 & NSF 7

Options

- White or stainless steel interior
- Stainless steel exterior
- Silver trim
- Cutaway end panels
- Reflective glass rear sliding doors (swinging on 26" model)
- 18"D wire racks or glass shelves on non-refrigerated models
- Black or stainless steel rear exterior panels
- 1" bumper on front & ends
- Breeze™ self-contained refrigeration with 6' power cord - specify levelers, casters or 6"H legs
- Energy-efficient evaporator fans
- Clean Sweep® condenser coil cleaner
- Rear door or front glass locks
- No refrigeration for ambient display

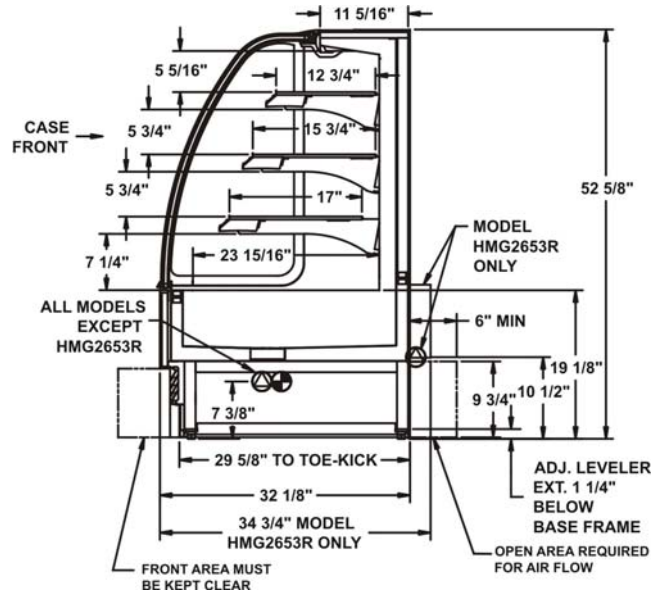
ONE PART PASSION, TWO PARTS SCIENCE



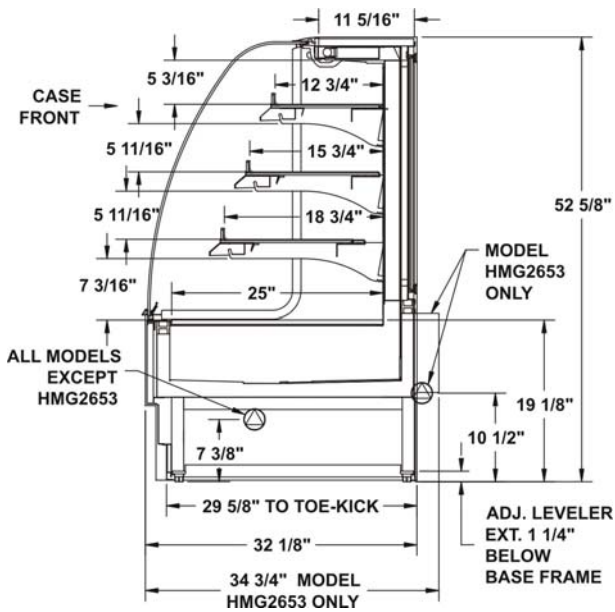
Specifications - HMG Cases

Model	LxDxH
HMG26	26-7/8"x34-3/4"x52-5/8"
HMG39	38-7/8"x32-1/8"x52-5/8"
HMG51	50-7/8"x32-1/8"x52-5/8"
HMG63	62-11/16"x32-1/8"x52-5/8"
HMG75	75-1/4"x32-1/8"x52-5/8"

STANDARD



Non-Refrigerated



IMPORTANT NOTES

Units are supplied with levelers which must be adjusted during installation to ensure the unit is level and plumb.

Dimensions reflect levelers extended 1-1/4".

INTENDED ENVIRONMENT

Designed to operate in ambient conditions of 75°F with 55% relative humidity.

Integrated average product temperature of 41°F.

Ambient product temperature (non-refrigerated option).

INTENDED USE

Unpackaged refrigerated or non-refrigerated products.

For more information on any of our products or services please visit us on the web at:

www.structuralconcepts.com

INFORMATION IS SUBJECT TO CHANGE WITHOUT NOTICE.

