

Wall Series - PHRM Pastry/Hard Roll Cases

Models
PHRM56
PHRM74



Non-refrigerated upright self-service pastry & roll merchandiser

Standard Features

- White interior
- Painted exterior
- No end panels (specify ends per lineup)
- Self-closing glass swinging front doors
- Angled mirror in upper display
- Acrylic bins with lift-up fronts
- Non-refrigerated rear storage without doors
- Solid upper back panel
- Lighted tray support shelves (trays not included)
- T-8 shelf lights
- 12" straight blade power cord
- Straight base without front storage
- Curved header
- ETL certified to CAN/CSA 22.2, conforms to UL 65 & NSF 2

Options

- Black interior
- Laminated exterior
- Full w/mirror, cutaway or case to case glass end panels
- Non-refrigerated rear storage with doors
- Sliding upper rear doors—reflective glass or mirror
- Lighted wire rack shelves
- Straight or angled base with front storage & waste bin
- 1" bumper on front & ends
- Square header
- Price tag molding

ONE PART PASSION, TWO PARTS SCIENCE

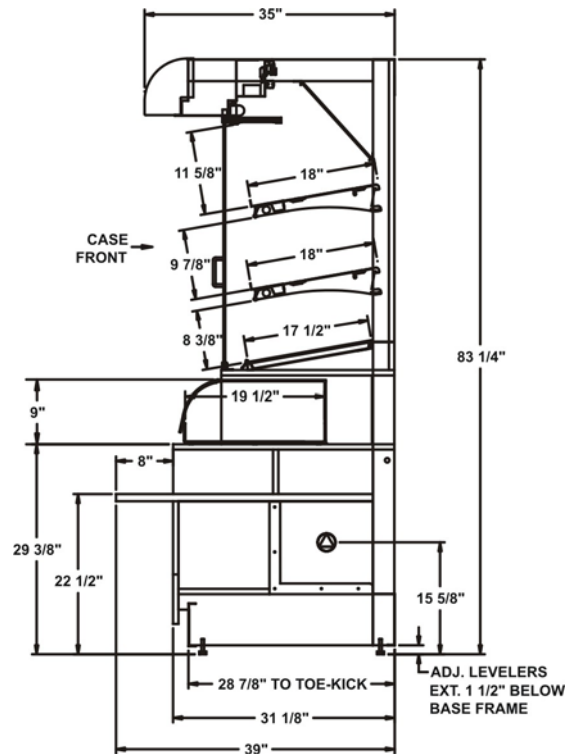


Specifications - PHRM Cases

| Model | L*xDxH |
|--------|-----------------|
| PHRM56 | 56"x39"x83-1/4" |
| PHRM74 | 74"x39"x83-1/4" |

*without 1" end panels

STANDARD Straight Base



IMPORTANT NOTES

40" minimum door entry clearance required (without shipping skid).

Units are supplied with levelers which must be adjusted during installation to ensure the unit is level and plumb.

Dimensions reflect levelers extended 1-1/4".

INTENDED ENVIRONMENT

Designed to operate in ambient conditions of 75°F with 55% relative humidity.

Integrated ambient product temperature.

INTENDED USE

Unpackaged non-refrigerated products.

INFORMATION IS SUBJECT TO CHANGE WITHOUT NOTICE.

