

S Series - TS Service Cases



Single deck service merchandisers with spherical corner cases

Models

RTS36
RTS48
RTS60
RTSIW45
RTSIW90
RTSOW45
RTSOW90

Applications

- Forced air refrigeration
- Medium temperature integrated average 41°F

Standard Features

- Black interior
- Laminated exterior
- White rear exterior
- Black trim
- No end panels (specify ends per lineup)
- Curved single pane fixed front glass
- Flat front panel
- Electrical leads
- Rear electrical access
- Levelers
- Remote refrigeration with TXV
- Display surface, front & rear work ledge is Night Sky Corian solid surface
- ETL certified to CAN/CSA 22.2, conforms to UL 471, UL 65, NSF 2 & NSF 7

Options

- White or stainless steel interior
- Stainless steel exterior
- Black or stainless steel rear exterior
- Silver trim
- Full or case to case glass end panels
- Step front (increases depth of unit 10")
- Black or stainless steel solid back panel
- LED lighted smoked glass shelf
- 1" bumper on front
- Breeze™ self-contained refrigeration with 6' power cord (straight units only) -specify levelers, casters or 6"H legs
- Clean Sweep® condenser coil cleaner
- Other solid surface colors available
- Non-refrigerated for ambient display

ONE PART PASSION, TWO PARTS SCIENCE

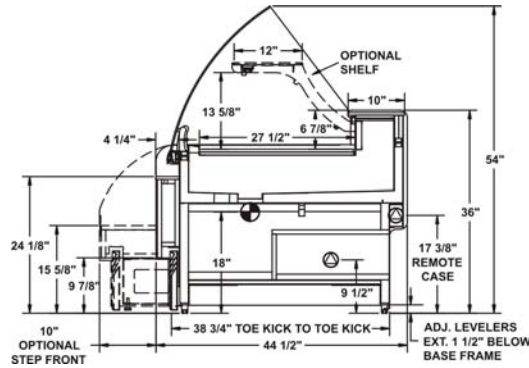


Specifications - TS Cases

Model	L*xDxH
RTS36	38-3/4"x44-1/2"x54"
RTS48	50-3/4"x44-1/2"x54"
RTS60	62-9/16"x44-1/2"x54"
RTSIW45	56-5/8"x44-1/2"x54"
RTSIW90	102-3/8"x44-1/2"x54"
RTSOW45	41-3/4"x44-1/2"x54 "
RTSOW90	75"x44-1/2"x54"

*without 1" end panels

STANDARD



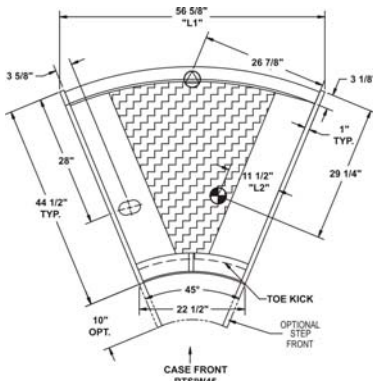
IMPORTANT NOTES

43" minimum door entry clearance required (without shipping skid).

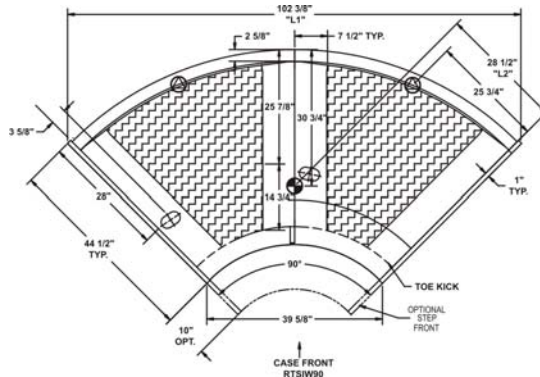
Units are supplied with levelers which must be adjusted during installation to ensure the unit is level and plumb.

Dimensions reflect levelers extended 1-1/2"

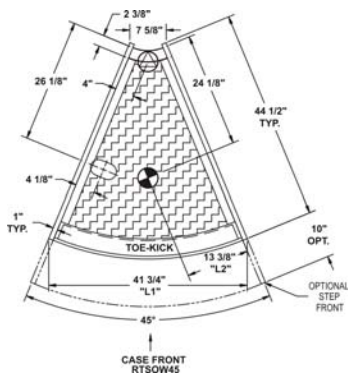
Inside curve 45°



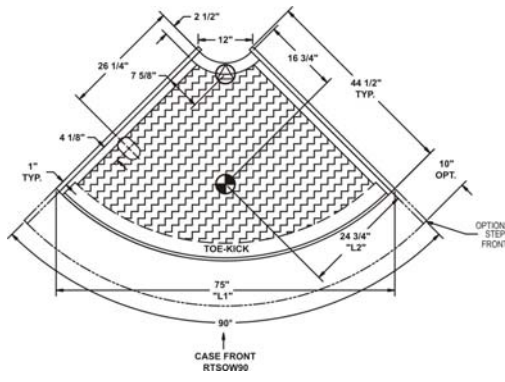
Inside curve 90°



Outside curve 45°



Outside curve 90°



INFORMATION IS SUBJECT TO CHANGE WITHOUT NOTICE.



INTENDED ENVIRONMENT

Designed to operate in ambient conditions of 75°F with 55% relative humidity.

Integrated average product temperature of 41°F.

Integrated ambient product temperature.

INTENDED USE

Packaged / unpackaged refrigerated & non-refrigerated products.

For more information on any of our products or services please visit us on the web at:

www.structuralconcepts.com