

WAVE Series - WCC Concave Open Upright Cases



Models

FRCC22
FRCC45
FRCC67

Applications

- Forced air refrigeration
- Medium temperature integrated average 41°F
- For fresh cut flowers
- Designed to be used with straight and curved merchandisers to create WAVE lineups

Concave curved open upright merchandisers for floral products

Standard Features

- Black interior
- Black exterior
- No end panels (specify ends per lineup)
- Open reach-in front
- Galvanized exterior back panel
- 13" bucket support shelves (4 levels)
- T-8 top light
- Glass upper & lower front panels
- Electrical leads
- Top electrical access
- Base rail system for shims
- Remote refrigeration with TXV piped at base
- ETL conforms to UL 471

Options

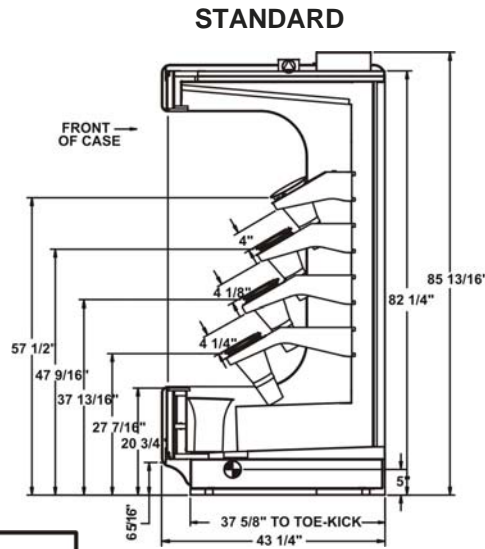
- Laminate exterior
- Full or cutaway end panels
- Black exterior back panel
- 2" bumper on ends
- Remote refrigeration with TXV piped at top
- Fresh Flow® automatic watering system

ONE PART PASSION, TWO PARTS SCIENCE



Specifications - WCC Concave Open Upright

Model	LxDxH
FRCC22	48-13/16"x43-1/4"x85-13/16"
FRCC45	93-13/16"x43-1/4"x85-13/16"
FRCC67	135-11/16"x43-1/4"x85-13/16"



IMPORTANT NOTES

INTENDED ENVIRONMENT

Designed to operate in ambient conditions of 75°F with 55% relative humidity.

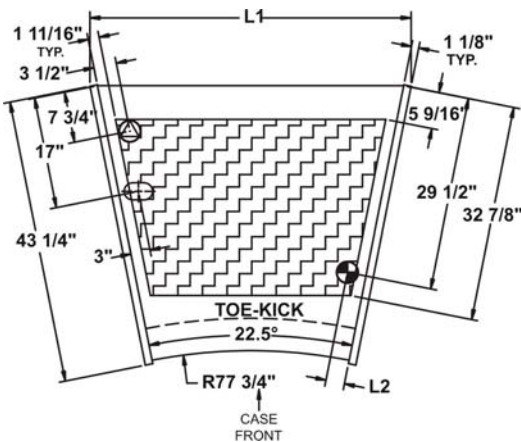
INTENDED USE

Refrigerated floral products

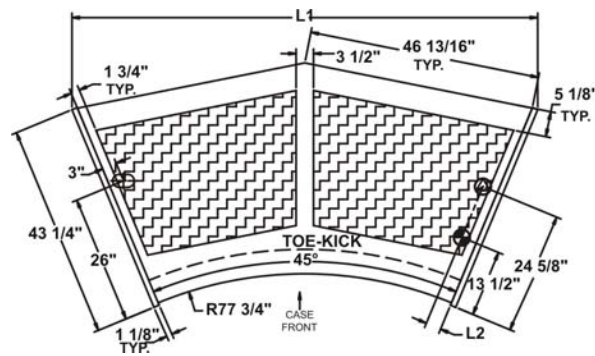
Bucket Capacities

Model	Standard Configuration	W/ Optional Fresh Flow System
FRCC22	Shelving = (16) 8"D x 13"T Deck = (3) 9"D x 10"T	Fresh Flow = (17) 8"D x 13"T Deck = (3) 9"D x 10"T
FRCC45	Shelving = (32) 8"D x 13"T Deck = (7) 9"D x 10"T	Fresh Flow = (30) 8"D x 13"T Deck = (7) 9"D x 10"T
FRCC67	Shelving = (48) 8"D x 13"T Deck = (11) 9"D x 10"T	Fresh Flow = (51) 8"D x 13"T Deck = (10) 9"D x 10"T

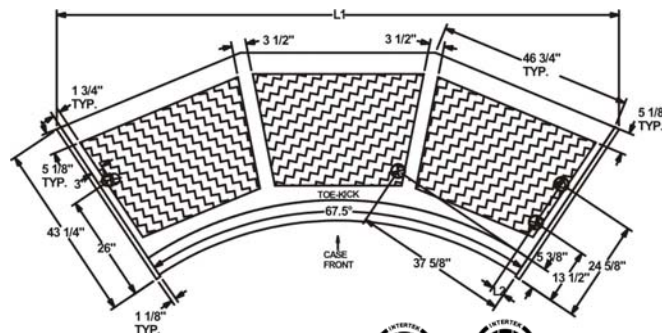
Plan View - FRCC22



Plan View - FRCC45



Plan View - FRCC67



INFORMATION IS SUBJECT TO CHANGE WITHOUT NOTICE.

