

Wave Series - WD Straight Upright Door Cases



Models

- F1
- F2
- F3
- F4

Applications

- Forced air refrigeration
- Medium temperature integrated average 41°F
- For fresh floral arrangements
- Designed to be used with straight and curved merchandisers to create WAVE lineups

Straight upright door merchandisers for floral products

Standard Features

- Black interior
- Black exterior
- No end panels (specify ends per lineup)
- Frameless glass clear view doors
- Galvanized exterior back panel
- Non-lighted clear glass shelves
- T-8 top light
- Electrical leads
- Top electrical access
- Base rail system for shims
- Remote refrigeration with TXV piped at base
- ETL conforms to UL 471

Options

- Laminate exterior
- Full, cutaway or filler end panels
- Black exterior back panel
- 2" bumper on ends
- Remote refrigeration with TXV piped at top
- Self-contained refrigeration

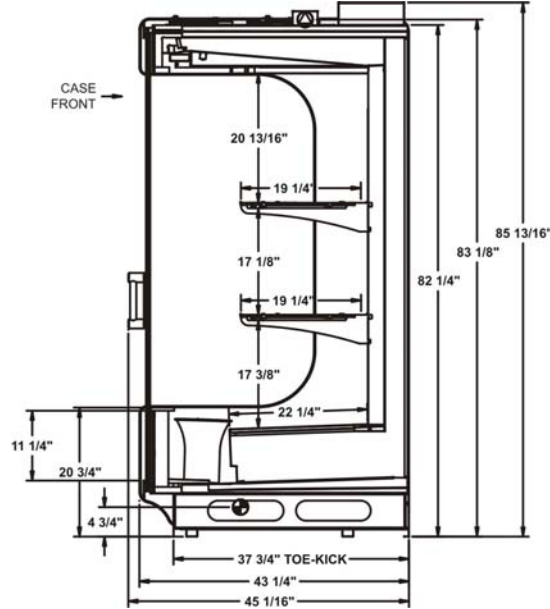
ONE PART PASSION, TWO PARTS SCIENCE



Specifications - WD Straight Cases

Model	LxDxH
F1	32-1/2"x45-1/16"x85-13/16"
F2	62-7/8"x45-1/16"x85-13/16"
F3	93-1/8"x45-1/16"x85-13/16"
F4	123-3/8"x45-1/16"x85-13/16"

STANDARD



IMPORTANT NOTES

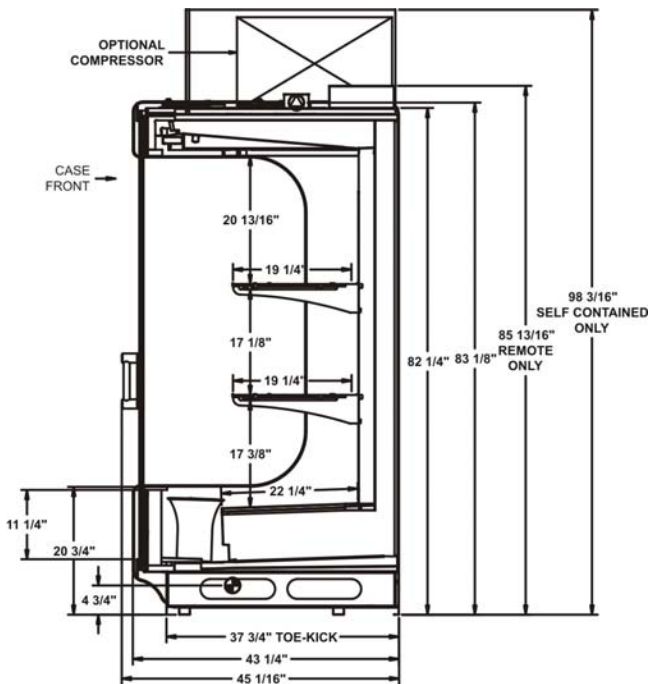
INTENDED ENVIRONMENT

Designed to operate in ambient conditions of 75°F with 55% relative humidity.

INTENDED USE

Refrigerated floral products

Optional Compressor



INFORMATION IS SUBJECT TO CHANGE WITHOUT NOTICE.



For more information on any of our products or services please visit us on the web at:

www.structuralconcepts.com