

Wave Series - WDCC Concave Upright Door Cases

Models

F1CC
F2CC
F3CC



Applications

- Forced air refrigeration
- Medium temperature integrated average of 41°F
- For fresh floral arrangements
- Designed to be used with straight and curved merchandisers to create WAVE lineups

Concave curved upright door merchandisers for floral products

Standard Features

- Black interior
- Black exterior
- No end panels (specify ends per lineup)
- Curved frameless glass clear view doors
- Galvanized exterior back panel
- Non-lighted clear glass shelves
- T-8 top light
- Electrical leads
- Top electrical access
- Base rail system for shims
- Remote refrigeration with TXV piped at base
- ETL conforms to UL 471

Options

- Laminate exterior
- Full, cutaway, case to case or filler end panels
- Black exterior back panel
- 2" bumper on ends
- Remote refrigeration with TXV piped at top

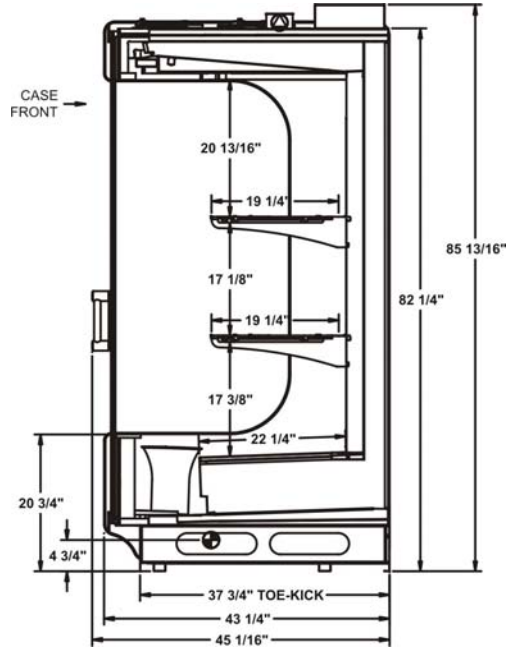
ONE PART PASSION, TWO PARTS SCIENCE



Specifications - WDCC Concave Upright

Model	LxDxH
F1CC	48-5/8"x45-1/16"x85-13/16"
F2CC	94"x45-1/16"x85-13/16"
F3CC	135-5/8"x45-1/16"x85-13/16"

STANDARD



IMPORTANT NOTES

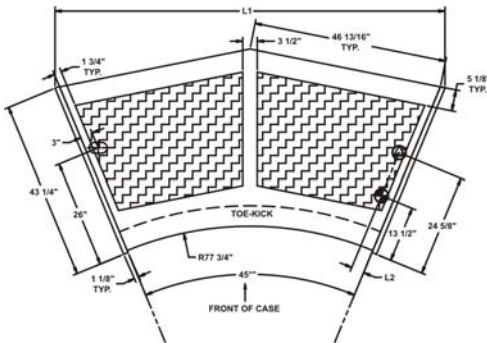
INTENDED ENVIRONMENT

Designed to operate in ambient conditions of 75°F with 55% relative humidity.

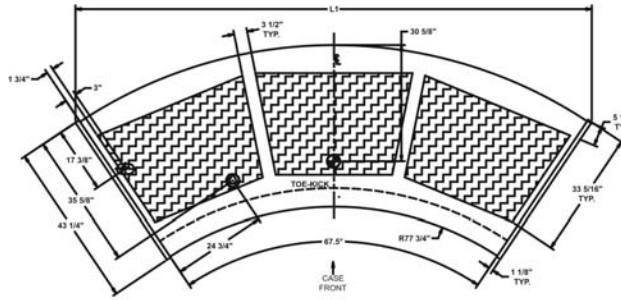
INTENDED USE

Refrigerated floral products

Plan View - F2CC



Plan View - F3CC



INFORMATION IS SUBJECT TO CHANGE WITHOUT NOTICE.



For more information on any of our products or services please visit us on the web at:

www.structuralconcepts.com