

# Fusion

GHPF 52"H Dry Self-Service Case

Structural Concepts®  
DELIVERING FRESH. ALWAYS.™

- (Lengths do not include 1-1/8" end panels)
- GHPF452LB

• GHPF552LB

• GHPF652LB

• GHPF852LB

48-3/4"L x 44-3/4"D x 51-1/4"H

60-1/2"L x 44-3/4"D x 51-1/4"H

73-1/8"L x 44-3/4"D x 51-1/4"H

97-1/2"L x 44-3/4"D x 51-1/4"H



GHPF452LB

- Included
- Flat swing-out front glass

• LED top & shelf lights

• Non-refrigerated for ambient display

• One year parts & labor warranty

• Powder coated Silversan Black rear exterior

Specify	Standard Features	Additional Options
EXTERIOR COLOR	• Laminate (stock colors)	• Laminate (non-stock colors)
INTERIOR COLOR	• Powder coated Silversan Black	
LOWER FRONT PANEL COLOR	• Powder coated Silversan Black	• Powder coated (stock/non-stock colors) • Stainless steel
BASE SUPPORT	• Rail system for shims	
BUMPER FRONT	• 1" Boston bumper (specify color)	• 1" Stainless steel plate rail bumper
END PANELS	• Full w/stainless steel mirror interior	• None (specify per line-up)
PACKAGE AREA	• Tissue box and bag holder	• (2) Tissue box holders
PRICE TAG MOLDING	• None	• 1" Price tag molding (black or silver) • Universal price tag molding (clear w/ open top)
REAR DOORS	• None (solid back panel)	• Reflective glass rear sliding doors
SHELVING	• Wire rack shelves (3)	• Wire rack shelves (4)
LIGHTS	• LED 3500K w/ frosted lens	• LED 4000K w/ frosted lens
ELECTRICAL CONNECTION	• Electrical leads	
MISCELLANEOUS		• 2"H Black wire baskets • 4"H Black wire baskets • 9"X 26" Trays • Front glass lock • Rear door lock

# Fusion

GHPF 52"H Dry Self-Service Case

Structural Concepts®

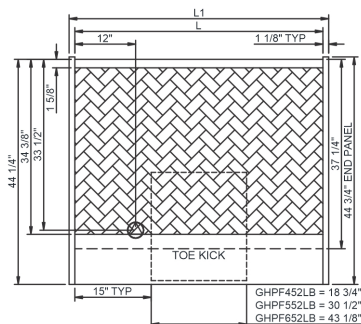
DELIVERING FRESH. ALWAYS.™

**Intended Environment:** Type I - Designed to operate in ambient conditions of 75°F with 55% relative humidity unless noted otherwise in system information below.

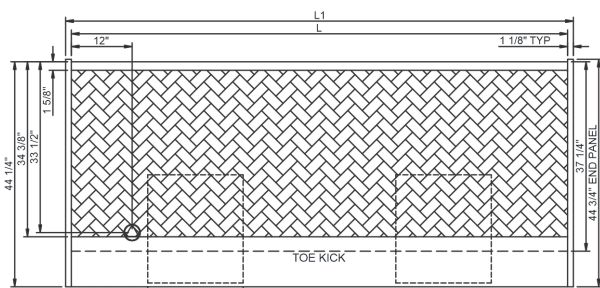
Zone	Intended Product To Be Displayed	Warmest Avg Prod Temp ° F
1	Packaged / unpackaged non-refrigerated products	Ambient

## PLAN VIEW

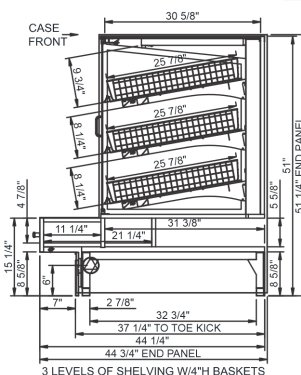
## SIDE VIEW



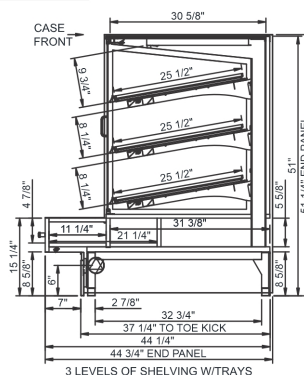
GHPF452LB, GHPF552LB, GHPF652LB CASE FRONT



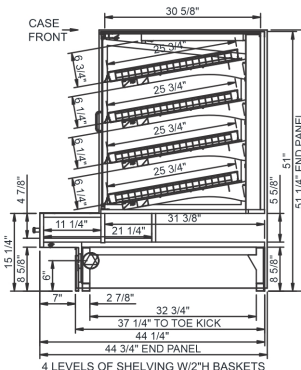
GHPF852LB CASE FRONT



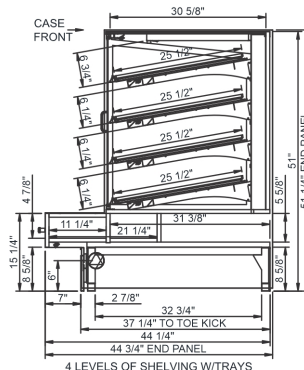
3 LEVELS OF SHELVING W/4\"/>



3 LEVELS OF SHELVING W/TRAYS



4 LEVELS OF SHELVING W/2\"/>



4 LEVELS OF SHELVING W/TRAYS

NOTE: ALL DIMENSIONS APPROXIMATE

- ELECTRICAL JUNCTION BOX (SUPPLIED WITH 6\"/>
- LOCATION OF DRAIN TUBE FOR REMOTE REF. ONLY (SUPPLIED WITH 3/4\"/>

- REFRIGERATION LINE CONNECTION.
- REMOTE FLOOR SINK & UTILITIES ACCESS AREA.

- SELF-CONTAINED CASE SERVICE ACCESS AREA.
- DRY CASE SERVICE ACCESS AREA.

### Model Technical Specifications

Model Technical Specifications																
Model	L"	L1"	L2"	System Circuit Volts			Phs	Freq	Amps ***	Watts	Wires	NEMA Plug	SST	Conv. Rack BTU/H	Para. Rack BTU/H	Est Wt
GHPF452LB	48.75	51.00	.00	Ambient/Lights (N/A)	Circuit #1	110-120	1	60	0.70	25	2+G	Leads Single	N/A	N/A	N/A	750
GHPF552LB	60.50	62.75	.00	Ambient/Lights (N/A)	Circuit #1	110-120	1	60	0.70	40	2+G	Leads Single	N/A	N/A	N/A	850
GHPF652LB	73.13	75.38	.00	Ambient/Lights (N/A)	Circuit #1	110-120	1	60	0.70	38	2+G	Leads Single	N/A	N/A	N/A	950
GHPF852LB	97.50	99.75	.00	Ambient/Lights (N/A)	Circuit #1	110-120	1	60	1.40	88	2+G	Leads Multiple	N/A	N/A	N/A	1,150

\*\*\* Does not include electric defrost on freezer models.

### Regulatory Approvals:

All Models	ETL Listed to UL 65
	ETL Sanitation to NSF/ANSI 2



### Important Notes:

- ELECTRICAL NOTE: If GFCI is required, a GFCI breaker MUST be used in lieu of a GFCI receptacle.
- 47" minimum door entry clearance required (without shipping skid).
- Units must be shimmed during installation to ensure the unit is level and plumb.

**⚠ WARNING:** This product can expose you to chemicals, including Urethane (Ethyl Carbamate), which are known to the State of California to cause cancer and birth defects or other reproductive harm. For more information go to [www.P65Warnings.ca.gov](http://www.P65Warnings.ca.gov).