

Fusion

GHSS 52"H Refrigerated Self-Service Case w/ Flat Profile

Structural Concepts®

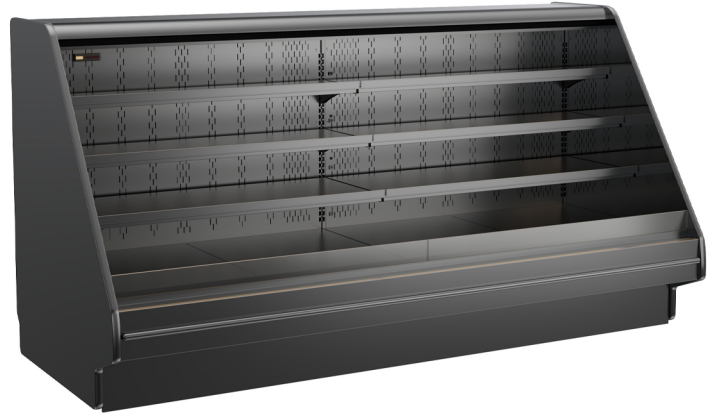
DELIVERING FRESH. ALWAYS.™

(Lengths do not include 1-1/8" end panels)

- **GHSS452RLB** 48-3/4"L x 42-3/4"D x 51-1/4"H
- **GHSS552RLB** 60-5/8"L x 42-3/4"D x 51-1/4"H
- **GHSS652RLB** 73-1/8"L x 42-3/4"D x 51-1/4"H
- **GHSS852RLB** 97-1/2"L x 42-3/4"D x 51-1/4"H
- **GHSS1052RLB** 121-1/8"L x 42-3/4"D x 51-1/4"H
- **GHSS1252RLB** 146-1/4"L x 42-3/4"D x 51-1/4"H

Included

- Integrated average product temperature of 40°F or less
- LED top & shelf lights
- One year parts & labor warranty
- Remote DX refrigeration
- Stainless steel rear exterior



GHSS852RLB

Specify	Standard Features	Additional Options
EXTERIOR COLOR	<ul style="list-style-type: none"> Laminate (stock colors) 	<ul style="list-style-type: none"> Laminate (non-stock colors) Powder coated (stock/non-stock colors) Powder coated Silversan Black Stainless steel
INTERIOR COLOR	<ul style="list-style-type: none"> Powder coated Silversan Black 	<ul style="list-style-type: none"> Stainless steel
LOWER FRONT PANEL COLOR	<ul style="list-style-type: none"> Powder coated Silversan Black 	<ul style="list-style-type: none"> Powder coated (stock/non-stock colors) Stainless steel
BASE SUPPORT	<ul style="list-style-type: none"> Rail system for shims 	
BUMPER FRONT	<ul style="list-style-type: none"> 1" Boston bumper (specify color) 	<ul style="list-style-type: none"> 1" Stainless steel plate rail bumper
END PANELS	<ul style="list-style-type: none"> Full w/stainless steel mirror interior 	<ul style="list-style-type: none"> Cutaway w/glass None (specify per line-up)
PRICE TAG MOLDING	<ul style="list-style-type: none"> None 	<ul style="list-style-type: none"> 1" Price tag molding (black or silver) Universal price tag molding (clear w/ open top)
REAR DOORS	<ul style="list-style-type: none"> None (solid back panel) 	<ul style="list-style-type: none"> Solid rear swinging doors
SHELVING	<ul style="list-style-type: none"> 12" & 16" & 20" Solid shelving 	<ul style="list-style-type: none"> 12" & 16" & 20" Glass shelving
LIGHTS	<ul style="list-style-type: none"> LED 3500K w/ frosted lens 	<ul style="list-style-type: none"> LED 4000K w/ frosted lens
ELECTRICAL CONNECTION	<ul style="list-style-type: none"> Electrical leads (remote) 	
REFRIGERATION	<ul style="list-style-type: none"> Remote DX refrigeration 	<ul style="list-style-type: none"> Remote w/thermostat, solenoid & TXV
SENSOR	<ul style="list-style-type: none"> None 	<ul style="list-style-type: none"> CPC discharge air sensor (remote)
MISCELLANEOUS		<ul style="list-style-type: none"> Rear door lock
ACCESSORIES		<ul style="list-style-type: none"> Drain strainer Night curtain, retractable, non-locking Removable wire security cover, locking

Fusion

GHSS 52"H Refrigerated Self-Service Case w/ Flat Profile

Structural Concepts®

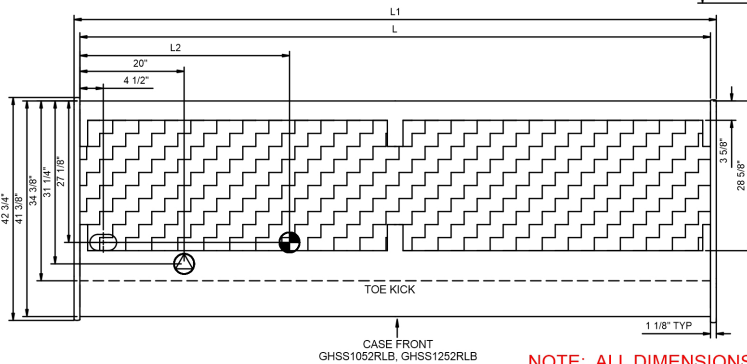
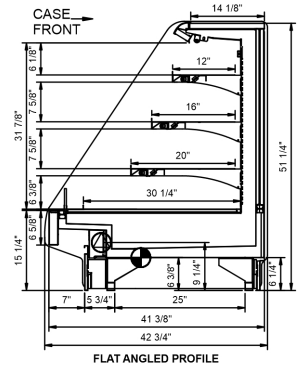
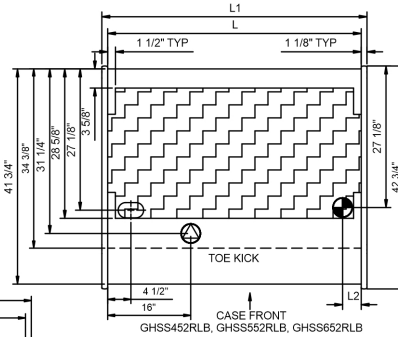
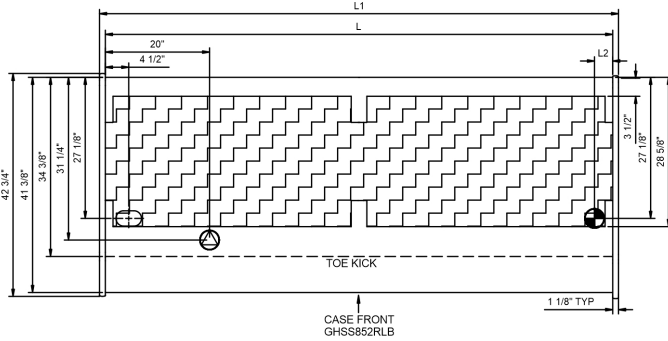
DELIVERING FRESH. ALWAYS.™

Intended Environment: Type I - Designed to operate in ambient conditions of 75°F with 55% relative humidity unless noted otherwise in system information below.

Zone	Intended Product To Be Displayed	Warmest Avg Prod Temp ° F
1	Packaged refrigerated products	40

PLAN VIEW

SIDE VIEW



- ELECTRICAL JUNCTION BOX (SUPPLIED WITH 6" LEADS OR POWER CORD).
- LOCATION OF DRAIN TUBE FOR REMOTE REF. ONLY (SUPPLIED WITH 3/4" OR 1 1/2" PVC TUBE).

NOTE: ALL DIMENSIONS APPROXIMATE

- REFRIGERATION LINE CONNECTION.
- REMOTE FLOOR SINK & UTILITIES ACCESS AREA.

- SELF-CONTAINED CASE SERVICE ACCESS AREA.
- DRY CASE SERVICE ACCESS AREA.

Model Technical Specifications

Model Technical Specifications																
Model	L"	L1"	L2"	System Circuit Volts			Phs	Freq	Amps ***	Watts	Wires	NEMA Plug	SST	Conv. Rack BTU/H	Para. Rack BTU/H	Est Wt
GHSS452RLB	48.75	51.00	3.50	Remote (DX)	Circuit #1	110-120	1	60	1.50	112	2+G	Leads Multiple	20.00	4510	4176	550
				Remote (GLYCOL 35%)	Circuit #1	110-120	1	60	1.50	88	2+G	Leads Multiple	20.00	4510	4176	
GHSS552RLB	60.63	62.88	3.50	Remote (DX)	Circuit #1	110-120	1	60	2.88	175	2+G	Leads Multiple	20.00	5495	5088	800
GHSS652RLB	73.13	75.38	3.50	Remote (DX)	Circuit #1	110-120	1	60	2.62	174	2+G	Leads Multiple	20.00	6480	6000	925
GHSS852RLB	97.50	99.75	3.50	Remote (DX)	Circuit #1	110-120	1	60	2.07	162	2+G	Leads Multiple	24.00	8450	7824	1,120
				Remote (GLYCOL 35%)	Circuit #1	110-120	1	60	2.07	162	2+G	Leads Multiple	20.00	8450	7824	
GHSS1052RLB	121.13	123.38	40.25	Remote (DX)	Circuit #1	110-120	1	60	3.81	264	2+G	Leads Multiple	20.00	10757	9960	1,300
GHSS1252RLB	146.25	148.50	45.13	Remote (DX)	Circuit #1	110-120	1	60	4.51	413	2+G	Leads Multiple	20.00	12528	11600	1,500
				Remote (GLYCOL 35%)	Circuit #1	110-120	1	60	4.51	338	2+G	Leads Multiple	20.00	12528	11600	

*** Does not include electric defrost on freezer models.

Regulatory Approvals:

All Models	<p>Accordance with AHRI Std 1200</p> <p>ETL Listed to UL 471</p> <p>ETL Listed to CAN/CSA 22.2 No. 120</p> <p>ETL Sanitation to NSF/ANSI 7</p>
------------	--



In Accordance with
AHRI Std 1200

DOE 2017
Energy Efficiency
Compliant

Important Notes:

- 1) ELECTRICAL NOTE: If GFCI is required, a GFCI breaker MUST be used in lieu of a GFCI receptacle.
- 2) 45" minimum door entry clearance required (without shipping skid).
- 3) Units must be shimmed during installation to ensure the unit is level and plumb.

⚠ WARNING: This product can expose you to chemicals, including Urethane (Ethyl Carbamate), which are known to the State of California to cause cancer and birth defects or other reproductive harm. For more information go to www.P65Warnings.ca.gov.