

# Technical Information

Fusion - GHSS 60"H Refrigerated Self-Service Case w/ Flat Profile

Structural Concepts®

DELIVERING FRESH. ALWAYS.™

## DIMENSIONS / SHIPPING

Model	L"	L1"	L2"	Est Wt (lbs)
GHSS460R	48.750	51.000	3.500	1,100
GHSS660R	73.125	75.375	3.500	1,200

## ELECTRICAL

Model	System Circuit Volts			Ph	Frq	Rated Load Amps	Min Cir Amps	Max OCP Amps	Watts	Wires	NEMA Plug	Amps Lights	Amps Fans	Amps Anti-Sweats	Amps Misc/Refrig/Heat
GHSS460R	Remote (DX)	Circuit #1	110-120	1	60	2.05	15	15	210	2+G	Leads Multiple	1.27	0.60	0.18	N/A
	Self-Contained (R449A)	Circuit #1	208-240	1	60	10.97	20	20	1,978	2+G	6-20P or L6-20P	0.72	0.75	3.50	6.00
GHSS660R	Remote (DX)	Circuit #1	110-120	1	60	3.42	15	15	316	2+G	Leads Multiple	1.93	1.20	0.29	N/A
	Remote (GLYCOL)	Circuit #1	110-120	1	60	3.42	15	15	316	2+G	Leads Multiple	1.93	1.20	0.29	N/A
	Self-Contained (R449A)	Circuit #1	208-240	1	60	14.71	20	20	2,406	2+G	6-20P or L6-20P	0.72	2.44	3.55	8.00

## REFRIGERATION

Model	Zone	Section	System	Env't	REMOTE REFRIGERATION					GLYCOL / R744 REFRIGERATION			
					SST (°F)	Conv. Rack BTUH	Para. Rack BTUH	Defrost Interval (Hrs)	Defrost Duration	Total GPM	Pressure Drop (psi)	Concent (%)	Liquid Temp (°F)
GHSS460R	All	Main	Remote-DX	Type I	20	6,091	5,640	4.00	25.00	N/A	N/A	N/A	N/A
	All	Main	Self-Contained-R449A	Type I	N/A	N/A	N/A	N/A	N/A	N/A	N/A	N/A	N/A
GHSS660R	All	Refrigerator	Remote-DX	Type I	20	9,072	8,400	4.00	30.00	N/A	N/A	N/A	N/A
	All	Refrigerator	Remote-Glycol	Type I	N/A	9,072	8,400	4.00	45.00	2.50	6.60	35%	20.00
	All	Main	Self-Contained-R449A	Type I	N/A	N/A	N/A	N/A	N/A	N/A	N/A	N/A	N/A

## INTENDED ENVIRONMENT

Type I - Designed to operate in ambient conditions of 75°F with 55% relative humidity unless noted otherwise under Env't above.

## WARMEST AVERAGE PRODUCT TEMP & INTENDED USE OF ZONES

Zone	Temp (°F)	Intended Use
1	40	Packaged refrigerated products

## IMPORTANT NOTES

- 1) ELECTRICAL NOTE: If GFCI is required, a GFCI breaker MUST be used in lieu of a GFCI receptacle
- 2) 45" minimum door entry clearance required (without shipping skid).
- 3) Units must be shimmed during installation to ensure the unit is level and plumb.

## REGULATORY

All Models	Accordance with AHRI Std 1200 ETL Listed to UL 471 ETL Listed to CAN/CSA 22.2 No. 120 ETL Sanitation to NSF/ANSI 7
------------	---



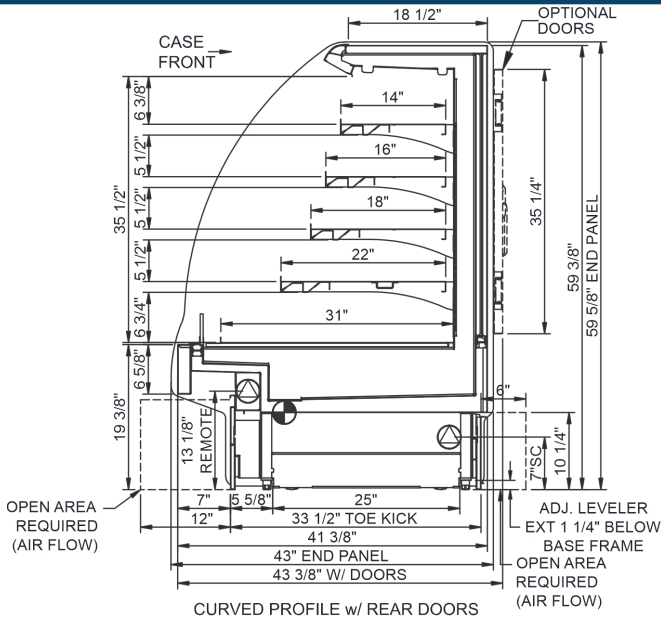
In Accordance with  
**AHRI Std 1200**

Technical Information

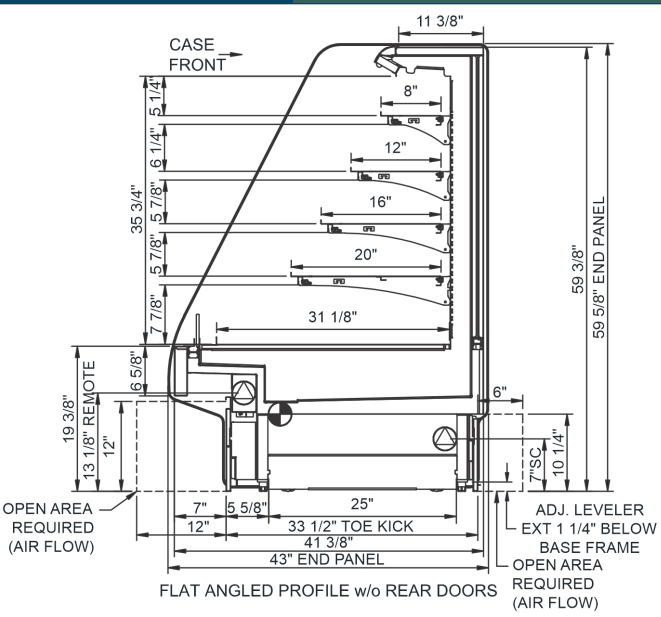
Fusion - GHSS 60"H Refrigerated Self-Service Case w/ Flat Profile

Structural Concepts®

DELIVERING FRESH. ALWAYS.™

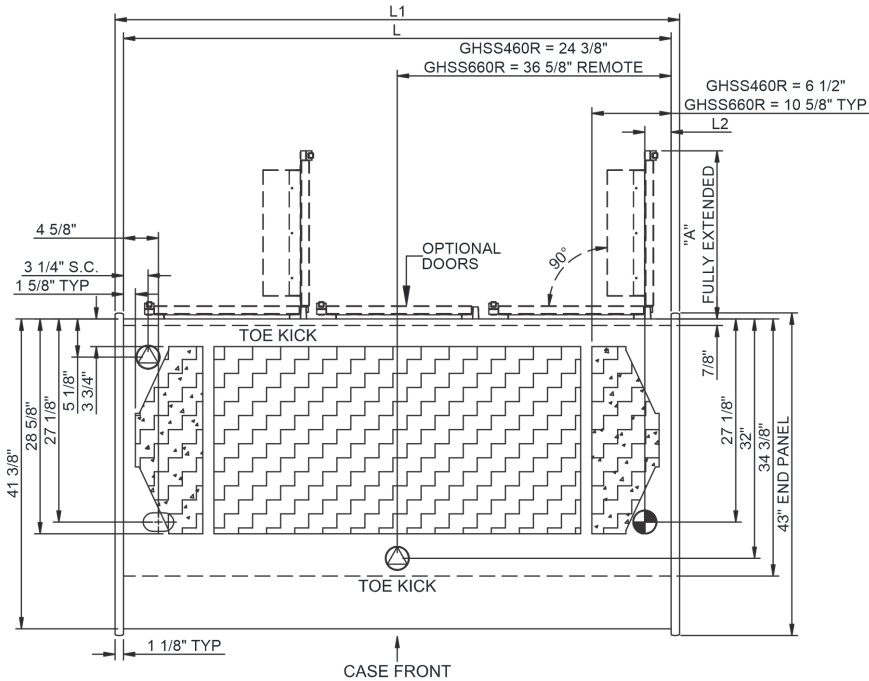


CURVED PROFILE w/ REAR DOORS



FLAT ANGLED PROFILE w/o REAR DOORS

CASE DEPTH	Solid Back	Rear Doors
Flat Front	41 3/8"	43 3/8"



NOTE: GHSS460R- (A) = 21" - (2) DOORS LH HINGED  
GHSS660R- (A) = 22 1/2" - (2) DOORS LH HINGED


NOTE: ALL DIMENSIONS APPROXIMATE

- 

ELECTRICAL JUNCTION BOX  
(SUPPLIED WITH 6" LEADS OR POWER CORD).
- 

REFRIGERATION LINE CONNECTION.
- 

SELF-CONTAINED CASE SERVICE ACCESS AREA.
- 

LOCATION OF DRAIN TUBE FOR REMOTE REF.  
ONLY (SUPPLIED WITH 3/4" OR 1 1/2" PVC TUBE).
- 

REMOTE FLOOR SINK & UTILITIES  
ACCESS AREA.
- 

DRY CASE SERVICE ACCESS AREA.