

Technical Information

Fusion - GHSS 60"H Refrigerated Self-Service Case w/ Curved Profile

Structural Concepts®

DELIVERING FRESH. ALWAYS.™

DIMENSIONS / SHIPPING

Model	L"	L1"	L2"	Est Wt (lbs)
GHSS460R	48.750	51.000	3.500	1,100
GHSS660R	73.125	75.375	3.500	1,200

ELECTRICAL

Model	System Circuit Volts			Ph	Frq	Rated Load Amps	Min Cir Amps	Max OCP Amps	Watts	Wires	NEMA Plug	Amps Lights	Amps Fans	Amps Anti-Sweats	Amps Misc/Refrig/Heat
GHSS460R	Remote (DX)	Circuit #1	110-120	1	60	2.05	15	15	210	2+G	Leads Multiple	1.27	0.60	0.18	N/A
	Self-Contained (R449A)	Circuit #1	208-240	1	60	10.97	20	20	1,978	2+G	6-20P or L6-20P	0.72	0.75	3.50	6.00
GHSS660R	Remote (DX)	Circuit #1	110-120	1	60	3.42	15	15	316	2+G	Leads Multiple	1.93	1.20	0.29	N/A
	Remote (GLYCOL)	Circuit #1	110-120	1	60	3.42	15	15	316	2+G	Leads Multiple	1.93	1.20	0.29	N/A
	Self-Contained (R449A)	Circuit #1	208-240	1	60	14.71	20	20	2,406	2+G	6-20P or L6-20P	0.72	2.44	3.55	8.00

REFRIGERATION

Model	Zone	Section	System	Envt	REMOTE REFRIGERATION					GLYCOL / R744 REFRIGERATION			
					SST (°F)	Conv. Rack BTUH	Para. Rack BTUH	Defrost Interval (Hrs)	Defrost Duration	Total GPM	Pressure Drop (psi)	Concent (%)	Liquid Temp (°F)
GHSS460R	All	Main	Remote-DX	Type I	20	6,091	5,640	4.00	25.00	N/A	N/A	N/A	N/A
	All	Main	Self-Contained-R449A	Type I	N/A	N/A	N/A	N/A	N/A	N/A	N/A	N/A	N/A
GHSS660R	All	Refrigerator	Remote-DX	Type I	20	9,072	8,400	4.00	30.00	N/A	N/A	N/A	N/A
	All	Refrigerator	Remote-Glycol	Type I	N/A	9,072	8,400	4.00	45.00	2.50	6.60	35%	20.00
	All	Main	Self-Contained-R449A	Type I	N/A	N/A	N/A	N/A	N/A	N/A	N/A	N/A	N/A

INTENDED ENVIRONMENT

Type I - Designed to operate in ambient conditions of 75°F with 55% relative humidity unless noted otherwise under Envt above.

WARMEST AVERAGE PRODUCT TEMP & INTENDED USE OF ZONES

Zone	Temp (°F)	Intended Use
1	40	Packaged refrigerated products

IMPORTANT NOTES

- 1) ELECTRICAL NOTE: If GFCI is required, a GFCI breaker MUST be used in lieu of a GFCI receptacle
- 2) 45" minimum door entry clearance required (without shipping skid).
- 3) Units must be shimmed during installation to ensure the unit is level and plumb.

REGULATORY

All Models
 Accordance with AHRI Std 1200
 ETL Listed to UL 471
 ETL Listed to CAN/CSA 22.2 No. 120
 ETL Sanitation to NSF/ANSI 7



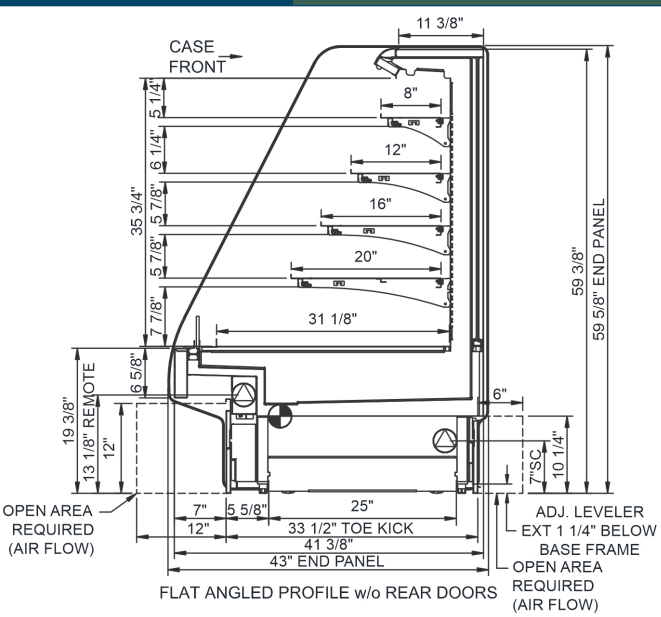
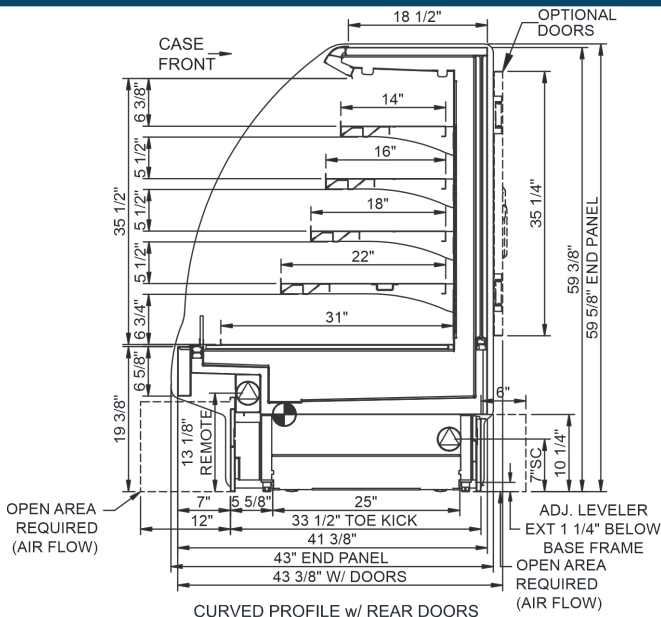
In Accordance with
AHRI Std 1200

Technical Information

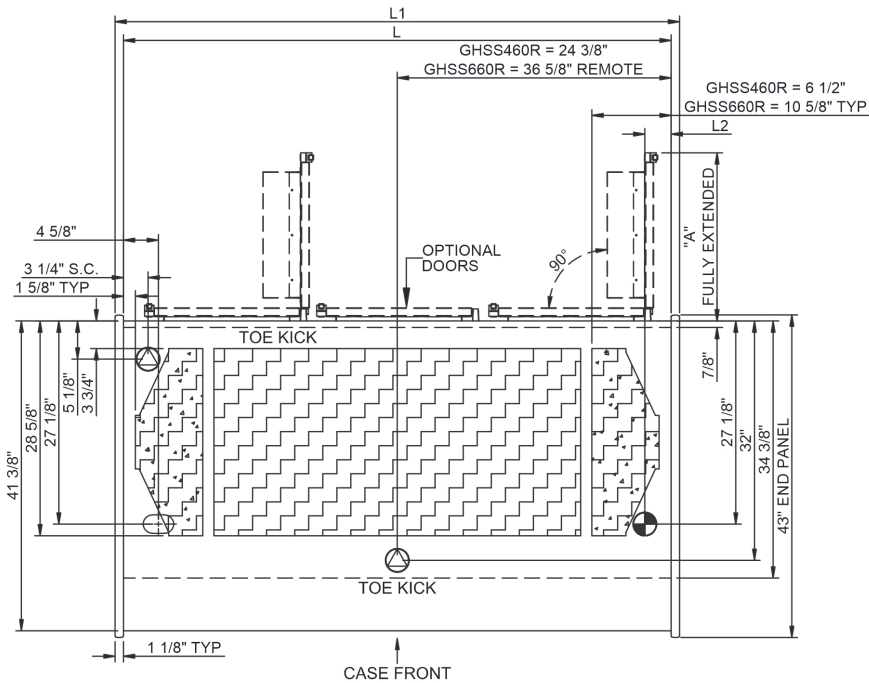
Fusion - GHSS 60"H Refrigerated Self-Service Case w/ Curved Profile

Structural Concepts®

DELIVERING FRESH. ALWAYS.™


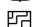



CASE DEPTH	Solid Back	Rear Doors
Flat Front	41 3/8"	43 3/8"



NOTE: GHSS460R- (A) = 21" - (2) DOORS LH HINGED
GHSS660R- (A) = 22 1/2" - (2) DOORS LH HINGED

NOTE: ALL DIMENSIONS APPROXIMATE

-  ELECTRICAL JUNCTION BOX
(SUPPLIED WITH 6" LEADS OR POWER CORD).
-  REFRIGERATION LINE CONNECTION.
-  SELF-CONTAINED CASE SERVICE ACCESS AREA.
-  LOCATION OF DRAIN TUBE FOR REMOTE REF.
ONLY (SUPPLIED WITH 3/4" OR 1 1/2" PVC TUBE).
-  REMOTE FLOOR SINK & UTILITIES
ACCESS AREA.
-  DRY CASE SERVICE ACCESS AREA.