

# Technical Information

Harmony - Combination Convertible Service Above Refrigerated Self-Service Case

Structural Concepts®

DELIVERING FRESH. ALWAYS.™

## DIMENSIONS / SHIPPING

Model	L"	L1"	L2"	Est Wt (lbs)
HMBC2	24.750	27.000	3.625	N/A
HMBC3	36.750	39.000	4.625	N/A
HMBC4	48.750	51.000	4.625	950
HMBC5	60.750	63.000	4.625	1,100
HMBC6	73.125	75.375	4.625	1,200

## ELECTRICAL

Model	System Circuit Volts			Ph	Frq	Rated Load Amps	Min Cir Amps	Max OCP Amps	Watts	Wires	NEMA Plug	Amps Lights	Amps Fans	Amps Anti-Sweats	Amps Misc/Refrig/Heat
HMBC2	Remote (DX)	Circuit #1	110-120	1	60	1.66	15	15	163	2+G	Leads Multiple	0.67	0.30	0.69	N/A
	Self-Contained (R513A)	Circuit #1	110-120	1	60	14.35	20	20	1,106	2+G	5-20P or L5-20P	0.70	1.50	4.05	8.10
HMBC3	Remote (DX)	Circuit #1	110-120	1	60	1.38	15	15	138	2+G	Leads Multiple	0.82	0.30	0.26	N/A
	Self-Contained (R449A)	Circuit #1	110-120	1	60	15.72	20	20	1,426	2+G	5-20P or L5-20P	0.70	1.80	4.22	9.00
HMBC4	Remote (DX)	Circuit #1	110-120	1	60	2.69	15	15	194	2+G	Leads Multiple	1.73	0.60	0.36	N/A
	Self-Contained (R449A)	Circuit #1	120/230V	1	60	10.93	20	20	1,814	3+G	14-20P or L14-20P	0.36	1.70	3.77	5.10
HMBC5	Remote (DX)	Circuit #1	110-120	1	60	2.93	15	15	152	2+G	Leads Multiple	1.59	0.90	0.44	N/A
	Self-Contained (R449A)	Circuit #1	120/230V	1	60	12.00	20	20	2,183	3+G	14-20P or L14-20P	0.36	2.13	4.38	6.10
HMBC6	Remote (DX)	Circuit #1	110-120	1	60	3.05	15	15	262	2+G	Leads Multiple	1.58	0.90	0.57	N/A
	Self-Contained (R449A)	Circuit #1	120/230V	1	60	13.62	20	20	2,106	3+G	14-20P or L14-20P	N/A	1.65	4.61	7.36
	Self-Contained (R449A)	Circuit #1	208-240	1	60	13.27	20	20	1,900	2+G	Leads Single	0.36	1.86	4.05	7.00

## REFRIGERATION

Model	Zone	Section	System	Envt	REMOTE REFRIGERATION					GLYCOL / R744 REFRIGERATION			
					SST (°F)	Conv. Rack BTUH	Para. Rack BTUH	Defrost Interval (Hrs)	Defrost Duration	Total GPM	Pressure Drop (psi)	Concent (%)	Liquid Temp (°F)
HMBC2	All	Main	Remote-DX	Type I	20	2,506	2,320	4.00	25.00	N/A	N/A	N/A	N/A
	All	Main	Self-Contained-R513A	Type I	N/A	N/A	N/A	N/A	N/A	N/A	N/A	N/A	N/A
HMBC3	All	Main	Remote-DX	Type I	20	4,104	3,800	4.00	25.00	N/A	N/A	N/A	N/A
	All	Main	Self-Contained-R449A	Type I	N/A	N/A	N/A	N/A	N/A	N/A	N/A	N/A	N/A
HMBC4	All	Main	Remote-DX	Type I	20	5,270	4,880	4.00	30.00	N/A	N/A	N/A	N/A
	All	Main	Self-Contained-R449A	Type I	N/A	N/A	N/A	N/A	N/A	N/A	N/A	N/A	N/A
HMBC5	All	Main	Remote-DX	Type I	20	6,307	5,840	4.00	30.00	N/A	N/A	N/A	N/A
	All	Main	Self-Contained-R449A	Type I	N/A	N/A	N/A	N/A	N/A	N/A	N/A	N/A	N/A
HMBC6	All	Main	Remote-DX	Type I	20	6,912	6,400	4.00	25.00	N/A	N/A	N/A	N/A
	All	Main	Self-Contained-R449A	Type I	N/A	N/A	N/A	N/A	N/A	N/A	N/A	N/A	N/A

## INTENDED ENVIRONMENT

Type I - Designed to operate in ambient conditions of 75°F with 55% relative humidity unless noted otherwise under Envt above.

## WARMEST AVERAGE PRODUCT TEMP & INTENDED USE OF ZONES

Zone	Temp (°F)	Intended Use
1	40	Packaged refrigerated products

## IMPORTANT NOTES

- 1) ELECTRICAL NOTE: If GFCI is required, a GFCI breaker MUST be used in lieu of a GFCI receptacle
- 2) 35" Minimum door entry clearance required (without shipping skid).
- 3) Units are supplied with levelers which must be adjusted during installation to ensure the unit is level and plumb.
- 4) Compressor air rear intake, front discharge. Toe kick cannot be blocked

## REGULATORY

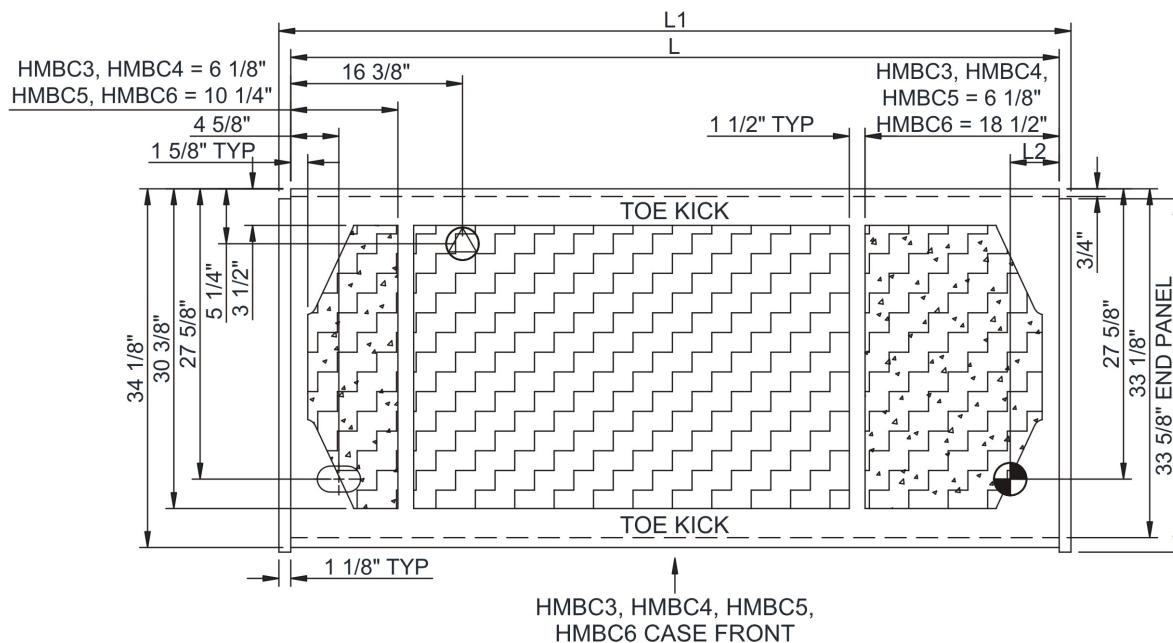
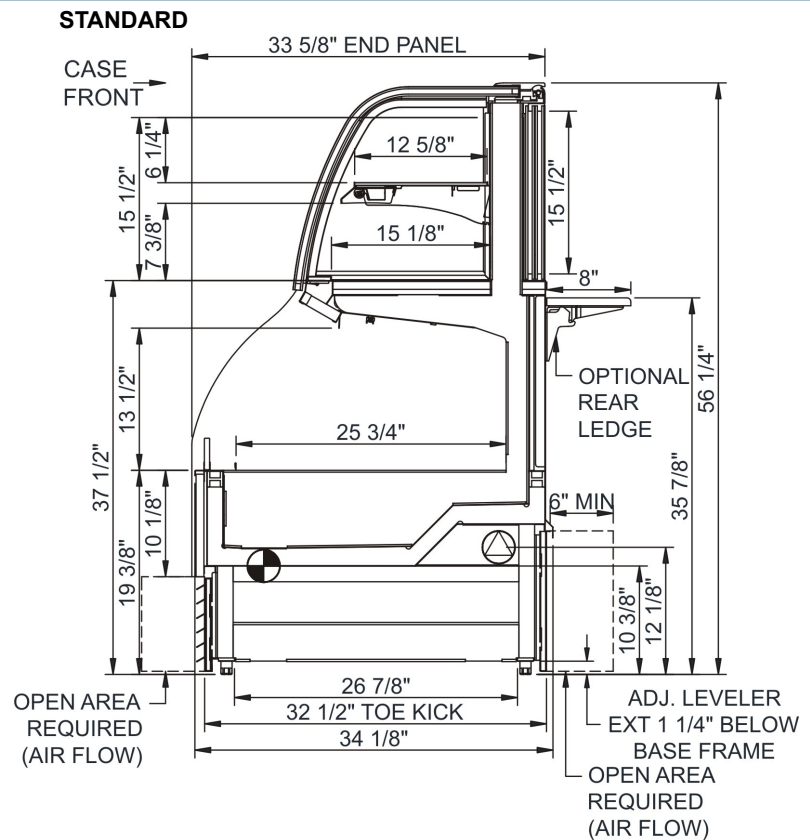
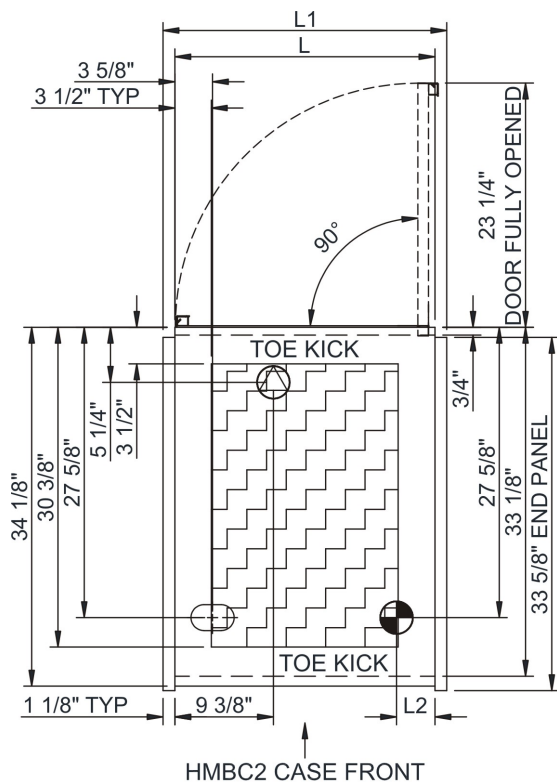
All Models	Accordance with AHRI Std 1200 ETL Listed to UL 471 ETL Listed to CAN/CSA 22.2 No. 120 ETL Sanitation to NSF/ANSI 7
------------	---



In Accordance with  
AHRI Std 1200

## Harmony - Combination Convertible Service Above Refrigerated Self-Service Case

DELIVERING FRESH. ALWAYS.™



NOTE: ALL DIMENSIONS APPROXIMATE

- |   |  |   |  |   |   |
|---|--|---|--|---|---|
|  | <b>ELECTRICAL JUNCTION BOX</b><br>(SUPPLIED WITH 6" LEADS OR POWER CORD).                      |  | <b>REFRIGERATION LINE CONNECTION.</b>                    |  | <b>SELF-CONTAINED CASE SERVICE ACCESS AREA.</b> |
|  | <b>LOCATION OF DRAIN TUBE FOR REMOTE REF.</b><br>ONLY (SUPPLIED WITH 3/4" OR 1 1/2" PVC TUBE). |  | <b>REMOTE FLOOR SINK &amp; UTILITIES</b><br>ACCESS AREA. |  | <b>DRY CASE SERVICE ACCESS AREA.</b>            |