

Technical Information

Harmony - Refrigerated Service Case

Structural Concepts®

DELIVERING FRESH. ALWAYS.™

DIMENSIONS / SHIPPING

Model	L"	L1"	L2"	Est Wt (lbs)
HMG3953R	36.750	38.750	4.750	850
HMG5153R	48.750	50.750	4.750	950
HMG6353R	60.625	62.625	4.750	1,150

ELECTRICAL

Model	System Circuit Volts			Ph	Frq	Rated Load Amps	Min Cir Amps	Max OCP Amps	Watts	Wires	NEMA Plug	Amps Lights	Amps Fans	Amps Anti-Sweats	Amps Misc/Refrig/Heat
HMG3953R	Remote (DX)	Circuit #1	110-120	1	60	1.35	15	15	141	2+G	Leads Multiple	0.76	0.30	0.29	N/A
	Self-Contained (R513A)	Circuit #1	110-120	1	60	10.26	15	15	902	2+G	5-15P or L5-15P	0.70	1.02	4.54	4.00
HMG5153R	Remote (DX)	Circuit #1	110-120	1	60	2.31	15	15	236	2+G	Leads Multiple	0.99	0.60	0.72	N/A
	Self-Contained (R513A)	Circuit #1	110-120	1	60	10.78	15	15	936	2+G	5-15P or L5-15P	0.70	1.40	4.68	4.00
HMG6353R	Remote (DX)	Circuit #1	110-120	1	60	2.69	15	15	248	2+G	Leads Multiple	1.52	0.60	0.57	N/A
	Self-Contained (R513A)	Circuit #1	110-120	1	60	11.48	20	20	1,012	2+G	5-20P or L5-20P	1.40	1.24	4.84	4.00

REFRIGERATION

Model	Zone	Section	System	Env't	REMOTE REFRIGERATION					GLYCOL / R744 REFRIGERATION			
					SST (°F)	Conv. Rack BTUH	Para. Rack BTUH	Defrost Interval (Hrs)	Defrost Duration	Total GPM	Pressure Drop (psi)	Concent (%)	Liquid Temp (°F)
HMG3953R	All	Main	Remote-DX	Type I	20	1,793	1,660	4.00	25.00	N/A	N/A	N/A	N/A
	All	Main	Self-Contained-R513A	Type I	N/A	N/A	N/A	N/A	N/A	N/A	N/A	N/A	N/A
HMG5153R	All	Main	Remote-DX	Type I	20	1,944	1,800	4.00	30.00	N/A	N/A	N/A	N/A
	All	Main	Self-Contained-R513A	Type I	N/A	N/A	N/A	N/A	N/A	N/A	N/A	N/A	N/A
HMG6353R	All	Main	Remote-DX	Type I	20	2,290	2,120	4.00	25.00	N/A	N/A	N/A	N/A
	All	Main	Self-Contained-R513A	Type I	N/A	N/A	N/A	N/A	N/A	N/A	N/A	N/A	N/A

INTENDED ENVIRONMENT

Type I - Designed to operate in ambient conditions of 75°F with 55% relative humidity unless noted otherwise under Env't above.

WARMEST AVERAGE PRODUCT TEMP & INTENDED USE OF ZONES

Zone	Temp (°F)	Intended Use
1	40	Unpackaged refrigerated products

IMPORTANT NOTES

- 1) ELECTRICAL NOTE: If GFCI is required, a GFCI breaker MUST be used in lieu of a GFCI receptacle
- 2) 35" minimum door entry clearance required (without shipping skid).
- 3) Units are supplied with levelers. They must be adjusted during installation to ensure the unit is level and plumb. Dimensions reflect levelers extended 1 1/4".

REGULATORY

All Models
 Accordance with AHRI Std 1200
 ETL Listed to UL 471
 ETL Listed to CAN/CSA 22.2 No. 120
 ETL Sanitation to NSF/ANSI 7



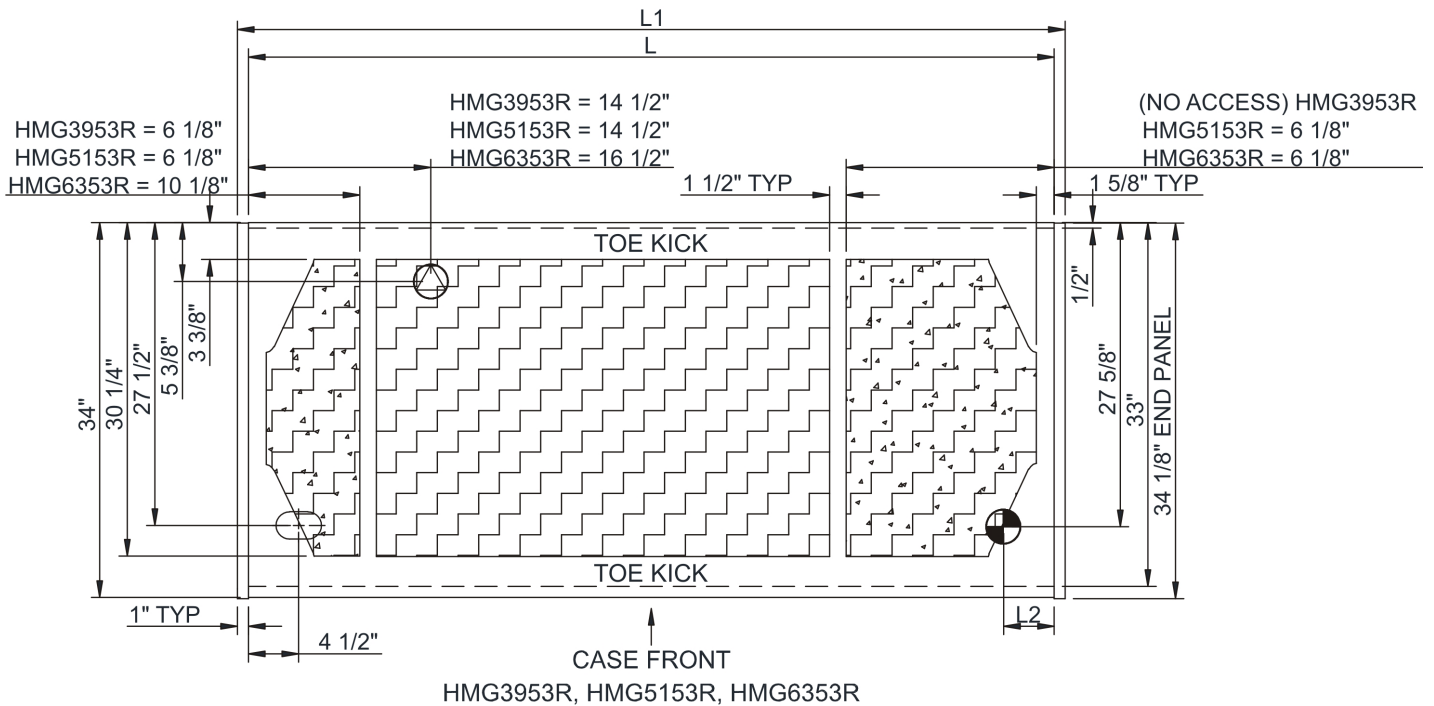
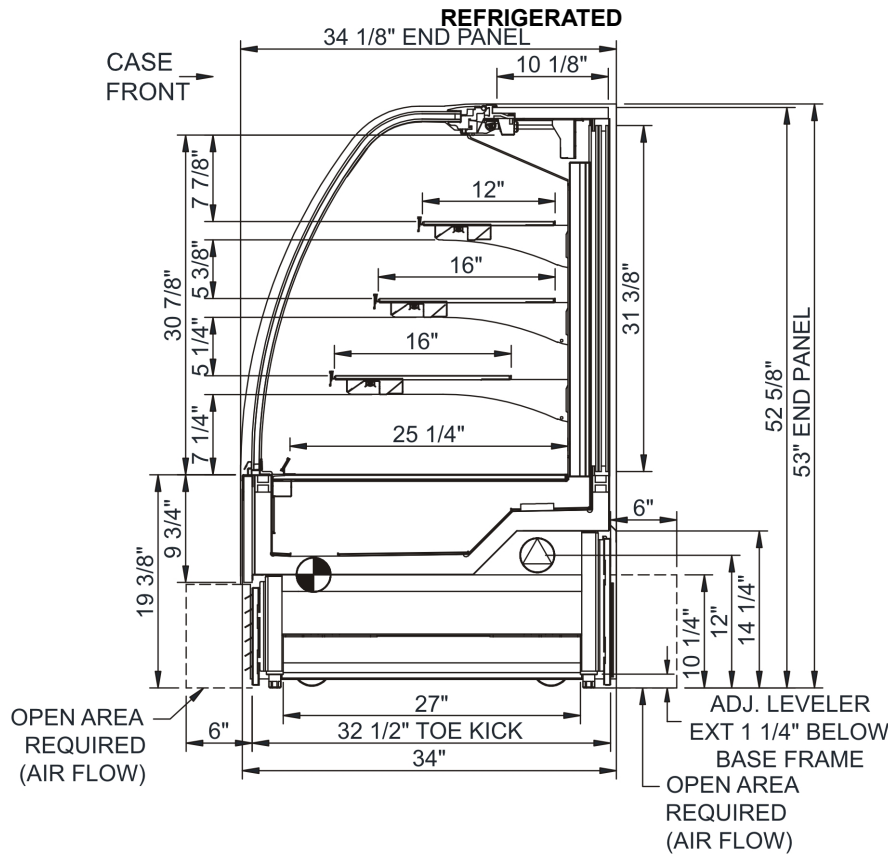
In Accordance with
AHRI Std 1200

Technical Information

Harmony - Refrigerated Service Case

Structural Concepts®

DELIVERING FRESH. ALWAYS.™



NOTE: ALL DIMENSIONS APPROXIMATE

⊗ ELECTRICAL JUNCTION BOX
(SUPPLIED WITH 6" LEADS OR POWER CORD).

⊙ LOCATION OF DRAIN TUBE FOR REMOTE REF.
ONLY (SUPPLIED WITH 3/4" OR 1 1/2" PVC TUBE).

⊕ REFRIGERATION LINE CONNECTION.

⊞ REMOTE FLOOR SINK & UTILITIES
ACCESS AREA.

⊞ SELF-CONTAINED CASE SERVICE ACCESS AREA.

⊞ DRY CASE SERVICE ACCESS AREA.