

# Technical Information

Oasis - Refrigerated Self-Service Case - 32"D - Top Mount Compressor

Structural Concepts®

DELIVERING FRESH. ALWAYS.™

## DIMENSIONS / SHIPPING

Model	L"	L1"	L2"	Est Wt (lbs)
B3632TM	33.875	36.625	3.125	900
B4732TM	44.875	47.625	3.125	1,000
B5932TM	56.875	59.625	3.125	1,100
B7132TM	68.875	71.625	3.125	1,300
B8832TM	85.625	88.375	3.125	1,700

## ELECTRICAL

Model	System Circuit Volts			Ph	Frq	Rated Load Amps	Min Cir Amps	Max OCP Amps	Watts	Wires	NEMA Plug	Amps Lights	Amps Fans	Amps Anti-Sweats	Amps Misc/Refrig/Heat
B3632TM	Remote (R404A)-Type II Env	Circuit #1	110-120	1	60	1.14	15	15	56	2+G	Leads Multiple	0.70	0.30	0.14	N/A
	Remote (R404A)-Type I Env	Circuit #1	110-120	1	60	1.14	15	15	56	2+G	Leads Multiple	0.70	0.30	0.14	N/A
	Self-Contained (R449A)-Type II Env	Circuit #1	110-120	1	60	16.00	20	20	1,355	2+G	5-20P or L5-20P	0.70	0.86	4.10	10.50
B4732TM	Remote (R404A)-Type II Env	Circuit #1	110-120	1	60	1.99	15	15	180	2+G	Leads Multiple	1.17	0.60	0.14	0.08
	Remote (R404A)-Type I Env	Circuit #1	110-120	1	60	1.99	15	15	180	2+G	Leads Multiple	1.17	0.60	0.14	0.08
	Self-Contained (R449A)-Type II Env	Circuit #1	208-240	1	60	10.05	20	20	1,815	2+G	6-20P or L6-20P	0.36	0.86	2.23	6.60
B5932TM	Remote (R404A)-Type II Env	Circuit #1	110-120	1	60	2.42	15	15	224	2+G	Leads Multiple	1.52	0.60	0.22	0.08
	Remote (R404A)-Type I Env	Circuit #1	110-120	1	60	2.42	15	15	224	2+G	Leads Multiple	1.52	0.60	0.22	0.08
	Self-Contained (R449A)-Type II Env	Circuit #1	208-240	1	60	12.00	20	20	2,264	2+G	6-20P or L6-20P	0.36	1.56	2.27	8.20
B7132TM	Remote (DX)-Type II Env	Circuit #1	110-120	1	60	2.62	15	15	270	2+G	Leads Multiple	1.68	0.60	0.26	0.08
	Remote (DX)-Type I Env	Circuit #1	110-120	1	60	2.62	15	15	270	2+G	Leads Multiple	1.68	0.60	0.26	0.08
	Self-Contained (R449A)-Type II Env	Circuit #1	208-240	1	60	15.82	20	20	2,972	2+G	6-20P or L6-20P	0.36	1.16	3.55	10.75
B8832TM	Remote (R404A)-Type I Env	Circuit #1	110-120	1	60	3.49	15	15	349	2+G	Leads Multiple	1.93	1.20	0.28	0.08
	Remote (R404A)-Type II Env	Circuit #1	110-120	1	60	3.49	15	15	349	2+G	Leads Multiple	1.93	1.20	0.28	0.08
	Self-Contained (R449A)-Type II Env	Circuit #1	208-240	1	60	19.85	30	30	3,394	2+G	6-30P or L6-30P	0.72	4.08	3.55	11.50

## REFRIGERATION

Model	Zone	Section	System	Env't	REMOTE REFRIGERATION					GLYCOL / R744 REFRIGERATION			
					SST (°F)	Conv. Rack BTUH	Para. Rack BTUH	Defrost Interval (Hrs)	Defrost Duration	Total GPM	Pressure Drop (psi)	Concent (%)	Liquid Temp (°F)
B3632TM	All	Main	Remote-R404A-Type II Env	Type II	20	4,320	4,000	4.00	25.00	N/A	N/A	N/A	N/A
	All	Main	Remote-R404A-Type I Env	Type I	20	3,542	3,280	4.00	25.00	N/A	N/A	N/A	N/A
	All	Main	Self-Contained-R449A-Type II Env	Type II	N/A	N/A	N/A	N/A	N/A	N/A	N/A	N/A	N/A
B4732TM	All	Main	Remote-R404A-Type II Env	Type II	20	5,918	5,480	4.00	25.00	N/A	N/A	N/A	N/A
	All	Main	Remote-R404A-Type I Env	Type I	20	4,882	4,520	4.00	25.00	N/A	N/A	N/A	N/A
	All	Main	Self-Contained-R449A-Type II Env	Type II	N/A	N/A	N/A	N/A	N/A	N/A	N/A	N/A	N/A
B5932TM	All	Main	Remote-R404A-Type II Env	Type II	20	7,042	6,520	4.00	25.00	N/A	N/A	N/A	N/A
	All	Main	Remote-R404A-Type I Env	Type I	20	5,746	5,320	4.00	25.00	N/A	N/A	N/A	N/A
	All	Main	Self-Contained-R449A-Type II Env	Type II	N/A	N/A	N/A	N/A	N/A	N/A	N/A	N/A	N/A
B7132TM	All	Refrigerator	Remote-DX-Type II Env	Type II	20	8,618	7,980	4.00	25.00	N/A	N/A	N/A	N/A
	All	Refrigerator	Remote-DX-Type I Env	Type I	20	7,042	6,520	4.00	25.00	N/A	N/A	N/A	N/A
	All	Main	Self-Contained-R449A-Type II Env	Type II	N/A	N/A	N/A	N/A	N/A	N/A	N/A	N/A	N/A
B8832TM	All	Main	Remote-R404A-Type I Env	Type I	20	10,606	9,820	4.00	25.00	N/A	N/A	N/A	N/A
	All	Main	Remote-R404A-Type II Env	Type II	20	13,046	12,080	4.00	25.00	N/A	N/A	N/A	N/A
	All	Main	Self-Contained-R449A-Type II Env	Type II	N/A	N/A	N/A	N/A	N/A	N/A	N/A	N/A	N/A

# Technical Information

Oasis - Refrigerated Self-Service Case - 32"D - Top Mount Compressor

Structural Concepts®

DELIVERING FRESH. ALWAYS.™

## INTENDED ENVIRONMENT

Type II - Designed to operate in ambient conditions of 80°F and 55% relative humidity unless noted otherwise under Env't above.

## WARMEST AVERAGE PRODUCT TEMP & INTENDED USE OF ZONES

Zone	Temp (°F)	Intended Use
1	40	Packaged refrigerated products

## IMPORTANT NOTES

- 1) ELECTRICAL NOTE: If GFCI is required, a GFCI breaker MUST be used in lieu of a GFCI receptacle
- 2) Top of unit must remain completely open.
- 3) Performance issues (product temperatures, water on floor, etc.) caused by adverse conditions are not covered by warranty.
- 4) Keep unit at least 15' from exterior doors, overhead HVAC vents, or any air curtain disruption.
- 5) End panels must be tightly joined or kept at least 6" away from any structure to prevent condensation.
- 6) Do not expose unit to direct sunlight or any heat source (ovens, fryers, etc.).
- 7) Tile floors, low ceilings, or small rooms will increase noise level.
- 8) Compressor air intake and discharge at top. Top of unit must remain completely open. (minimum 8" clearance above needed for compressor air discharge).

## REGULATORY

All Models

Accordance with AHRI Std 1200  
ETL Listed to UL 471  
ETL Listed to CAN/CSA 22.2 No. 120  
ETL Sanitation to NSF/ANSI 7



In Accordance with  
**AHRI Std 1200**

NOTE: ALL DIMENSIONS APPROXIMATE



ELECTRICAL JUNCTION BOX  
(SUPPLIED WITH 6" LEADS OR POWER CORD).  
LOCATION OF DRAIN TUBE FOR REMOTE REF.  
ONLY (SUPPLIED WITH 3/4" OR 1 1/2" PVC TUBE).



REFRIGERATION LINE CONNECTION.  
REMOTE FLOOR SINK & UTILITIES  
ACCESS AREA.



SELF-CONTAINED CASE SERVICE ACCESS AREA.



DRY CASE SERVICE ACCESS AREA.

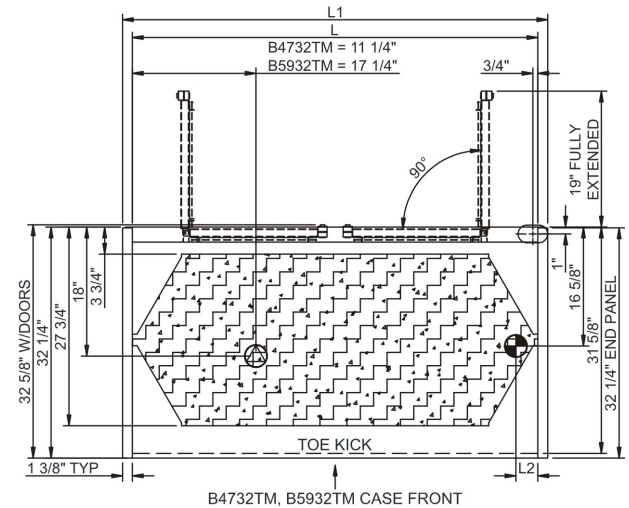
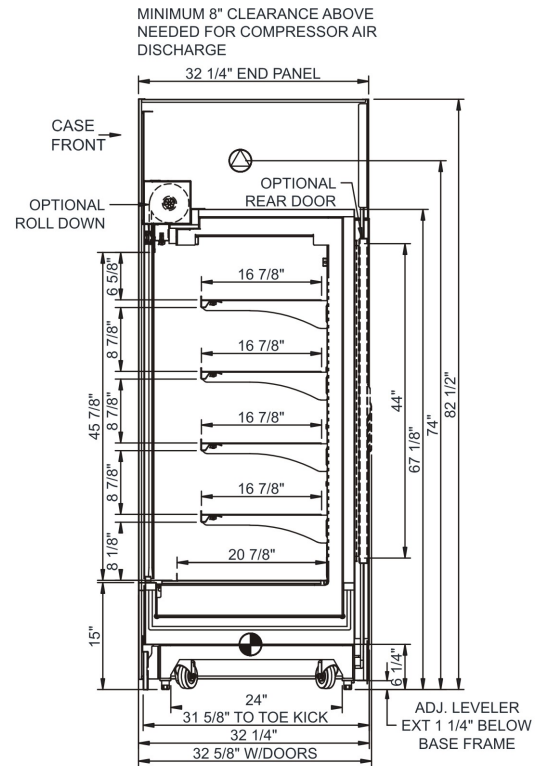
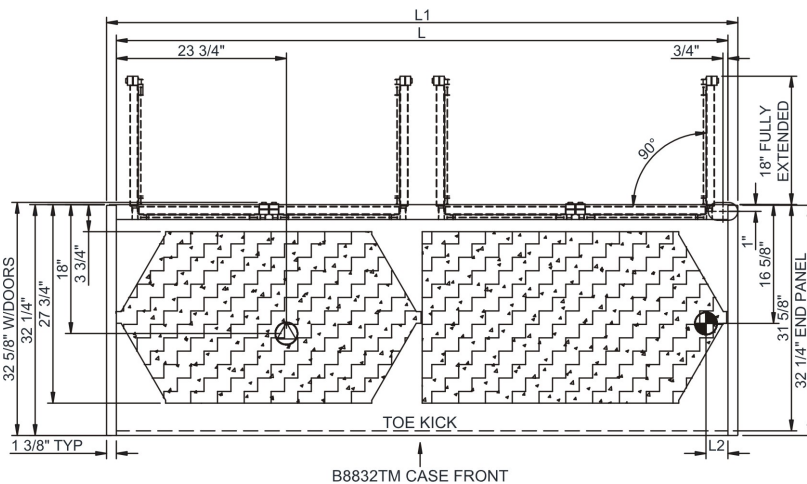
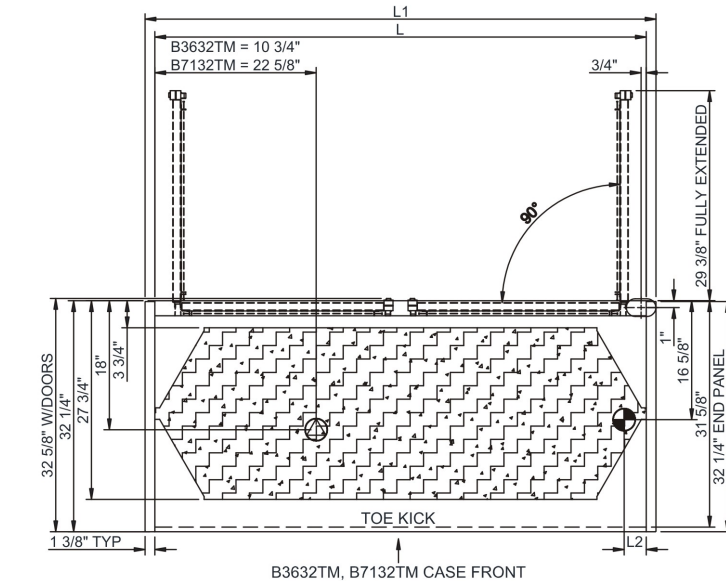
# Technical Information

Oasis - Refrigerated Self-Service Case - 32"D - Top Mount Compressor

Structural Concepts®

DELIVERING FRESH. ALWAYS.™

## STANDARD



NOTE: ALL DIMENSIONS APPROXIMATE

⊗ ELECTRICAL JUNCTION BOX  
(SUPPLIED WITH 6" LEADS OR POWER CORD).  
⊙ LOCATION OF DRAIN TUBE FOR REMOTE REF.  
ONLY (SUPPLIED WITH 3/4" OR 1 1/2" PVC TUBE).

⊕ REFRIGERATION LINE CONNECTION.  
⊞ REMOTE FLOOR SINK & UTILITIES  
ACCESS AREA.

⊞ SELF-CONTAINED CASE SERVICE ACCESS AREA.  
⊞ DRY CASE SERVICE ACCESS AREA.