

Technical Information

Oasis - Refrigerated Self-Service Case With Swing Doors

Structural Concepts®

DELIVERING FRESH. ALWAYS.™

DIMENSIONS / SHIPPING

Model	L"	L1"	L2"	Est Wt (lbs)
BD3632	34.000	36.250	3.125	N/A
BD4732	45.000	47.250	3.125	N/A

ELECTRICAL

Model	System	Circuit Volts	Ph	Frq	Rated Load Amps	Min Cir Amps	Max OCP Amps	Watts	Wires	NEMA Plug	Amps Lights	Amps Fans	Amps Anti-Sweats	Amps Misc/Refrig/Heat
BD3632	Remote (DX)-Type II Env	Circuit #1	110-120	1	60	1.09	15	15	50	2+G	Leads Multiple	0.70	0.31	0.08
	Self-Contained (R290)	Circuit #1	110-120	1	60	10.51	15	15	428	2+G	5-15P or L5-15P	0.70	0.31	9.50
BD4732	Remote (DX)-Type II Env	Circuit #1	110-120	1	60	1.09	15	15	58	2+G	Leads Multiple	0.70	0.31	0.08
	Self-Contained (R290)	Circuit #1	110-120	1	60	11.07	15	15	470	2+G	5-15P or L5-15P	0.70	0.87	9.50

REFRIGERATION

Model	Zone	Section	System	Env	REMOTE REFRIGERATION					GLYCOL / R744 REFRIGERATION			
					SST (°F)	Conv. Rack BTUH	Para. Rack BTUH	Defrost Interval (Hrs)	Defrost Duration	Total GPM	Pressure Drop (psi)	Concent (%)	Liquid Temp (°F)
BD3632	All	Main	Self-Contained-R290	Type II	N/A	N/A	N/A	N/A	N/A	N/A	N/A	N/A	N/A
	All	Main	Remote-DX-Type II Env	Type II	28	730	676	4.00	25.00	N/A	N/A	N/A	N/A
BD4732	All	Main	Self-Contained-R290	Type II	N/A	N/A	N/A	N/A	N/A	N/A	N/A	N/A	N/A
	All	Main	Remote-DX-Type II Env	Type II	28	821	760	4.00	25.00	N/A	N/A	N/A	N/A

INTENDED ENVIRONMENT

Type II - Designed to operate in ambient conditions of 80°F and 55% relative humidity unless noted otherwise under Env above.

WARMEST AVERAGE PRODUCT TEMP & INTENDED USE OF ZONES

Zone	Temp (°F)	Intended Use
1	40	Packaged refrigerated products

IMPORTANT NOTES

- 1) ELECTRICAL NOTE: If GFCI is required, a GFCI breaker MUST be used in lieu of a GFCI receptacle
- 2) Performance issues (product temperatures, water on floor, etc.) caused by adverse conditions are not covered by warranty.
- 3) Keep unit at least 15' from exterior doors, overhead HVAC vents, or any air curtain disruption.
- 4) End panels must be tightly joined or kept at least 6" away from any structure to prevent condensation.
- 5) Do not expose unit to direct sunlight or any heat source (ovens, fryers, etc.).
- 6) Tile floors, low ceilings, or small rooms will increase noise level.

REGULATORY

All Models	<p>Accordance with AHRI Std 1200</p> <p>ETL Listed to UL 471</p> <p>ETL Listed to CAN/CSA 22.2 No. 120</p> <p>ETL Sanitation to NSF/ANSI 7</p>
------------	--



In Accordance with
AHRI Std 1200

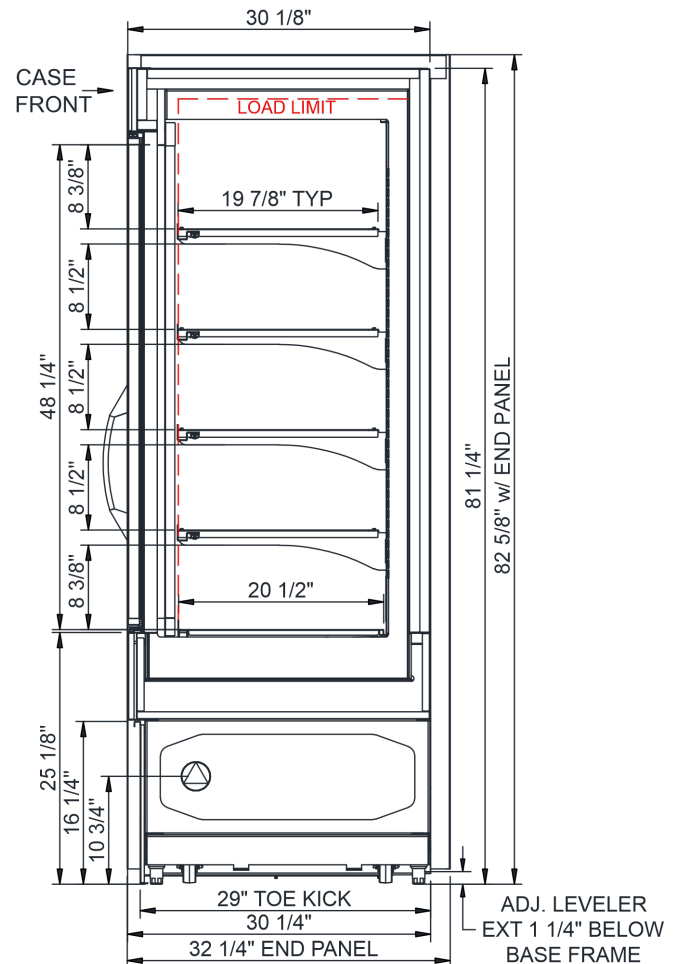
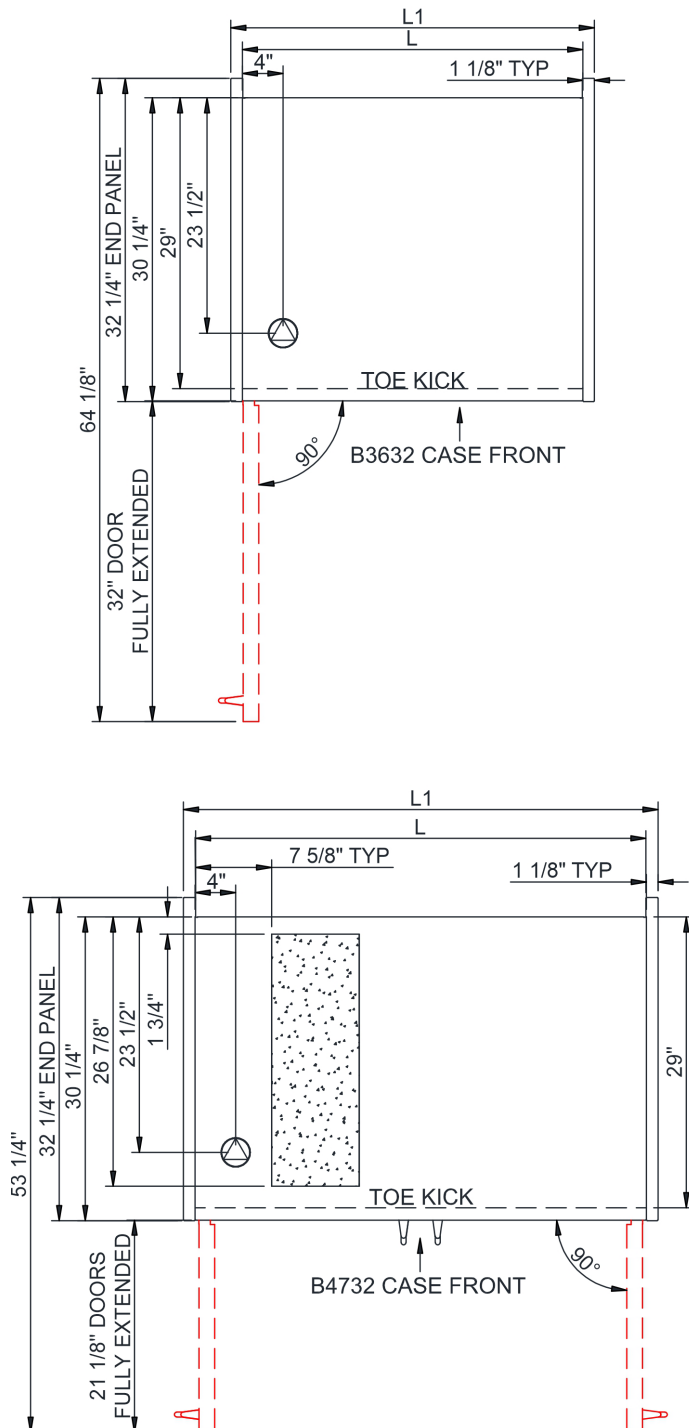
Technical Information

Oasis - Refrigerated Self-Service Case With Swing Doors

Structural Concepts®

DELIVERING FRESH. ALWAYS.™

NOTE: BD3632 ACCESS ONLY
BY PULLING OUT CONDENSER DRAWER



NOTE: COMPRESSOR AIR FRONT INTAKE
AND UPPER REAR DISCHARGE. LOWER
FRONT PANEL CANNOT BE BLOCKED.

NOTE: ALL DIMENSIONS APPROXIMATE

- | | | | | | |
|---|--|---|--|--|---|
|  | ELECTRICAL JUNCTION BOX
(SUPPLIED WITH 6" LEADS OR POWER CORD). |  | REFRIGERATION LINE CONNECTION. |  | SELF-CONTAINED CASE SERVICE ACCESS AREA. |
|  | LOCATION OF DRAIN TUBE FOR REMOTE REF.
ONLY (SUPPLIED WITH 3/4" OR 1 1/2" PVC TUBE). |  | REMOTE FLOOR SINK & UTILITIES
ACCESS AREA. |  | DRY CASE SERVICE ACCESS AREA. |