

# Technical Information

Oasis - Refrigerated Self-Service Island

Structural Concepts®

DELIVERING FRESH. ALWAYS.™

## DIMENSIONS / SHIPPING

Model	L"	L1"	L2"	Est Wt (lbs)
FSI663R	N/A	80.750	32.750	N/A
FSI863R	N/A	99.750	39.875	N/A

## ELECTRICAL

Model	System Circuit Volts			Ph	Frq	Rated Load Amps	Min Cir Amps	Max OCP Amps	Watts	Wires	NEMA Plug	Amps Lights	Amps Fans	Amps Anti-Sweats	Amps Misc/Refrig/Heat
FSI663R	Remote (N/A)	Circuit #1	110-120	1	60	5.45	15	15	425	2+G	Leads Multiple	2.80	1.80	0.85	N/A
	Self-Contained (R449A)	Circuit #1	208-240	1	60	22.78	30	30	4,739	2+G	6-30P	1.44	1.74	7.20	12.40
FSI863R	Remote (DX)	Circuit #1	110-120	1	60	8.57	15	15	548	2+G	Leads Multiple	2.80	2.40	0.79	2.58
	Self-Contained (R449A)	Circuit #1	208-240	1	60	24.00	30	30	4,925	2+G	6-30P or L6-30P	1.44	2.32	7.64	13.00

## REFRIGERATION

Model	Zone	Section	System	Env't	REMOTE REFRIGERATION					GLYCOL / R744 REFRIGERATION			
					SST (°F)	Conv. Rack BTUH	Para. Rack BTUH	Defrost Interval (Hrs)	Defrost Duration	Total GPM	Pressure Drop (psi)	Concent (%)	Liquid Temp (°F)
FSI663R	All	Main	Remote-N/A	Type II	20	13,478	12,480	4.00	25.00	N/A	N/A	N/A	N/A
	All	Main	Self-Contained-R449A	Type II	N/A	N/A	N/A	N/A	N/A	N/A	N/A	N/A	N/A
FSI863R	All	Main	Remote-DX	Type II	20	19,440	18,000	4.00	30.00	N/A	N/A	N/A	N/A
	All	Refrigerator	Self-Contained-R449A	Type II	N/A	N/A	N/A	N/A	N/A	N/A	N/A	N/A	N/A

## INTENDED ENVIRONMENT

Type II - Designed to operate in ambient conditions of 80°F and 55% relative humidity unless noted otherwise under Env't above.

## WARMEST AVERAGE PRODUCT TEMP & INTENDED USE OF ZONES

Zone	Temp (°F)	Intended Use
1	40	Packaged refrigerated products

## REGULATORY

All Models	Accordance with AHRI Std 1200 ETL Listed to UL 471 ETL Listed to CAN/CSA 22.2 No. 120 ETL Sanitation to NSF/ANSI 7
------------	---



In Accordance with  
**AHRI Std 1200**

## IMPORTANT NOTES

- 1) ELECTRICAL NOTE: If GFCI is required, a GFCI breaker MUST be used in lieu of a GFCI receptacle
- 2) NOTE: Electrical specs reflect highest Amp draw using lighted shelves option

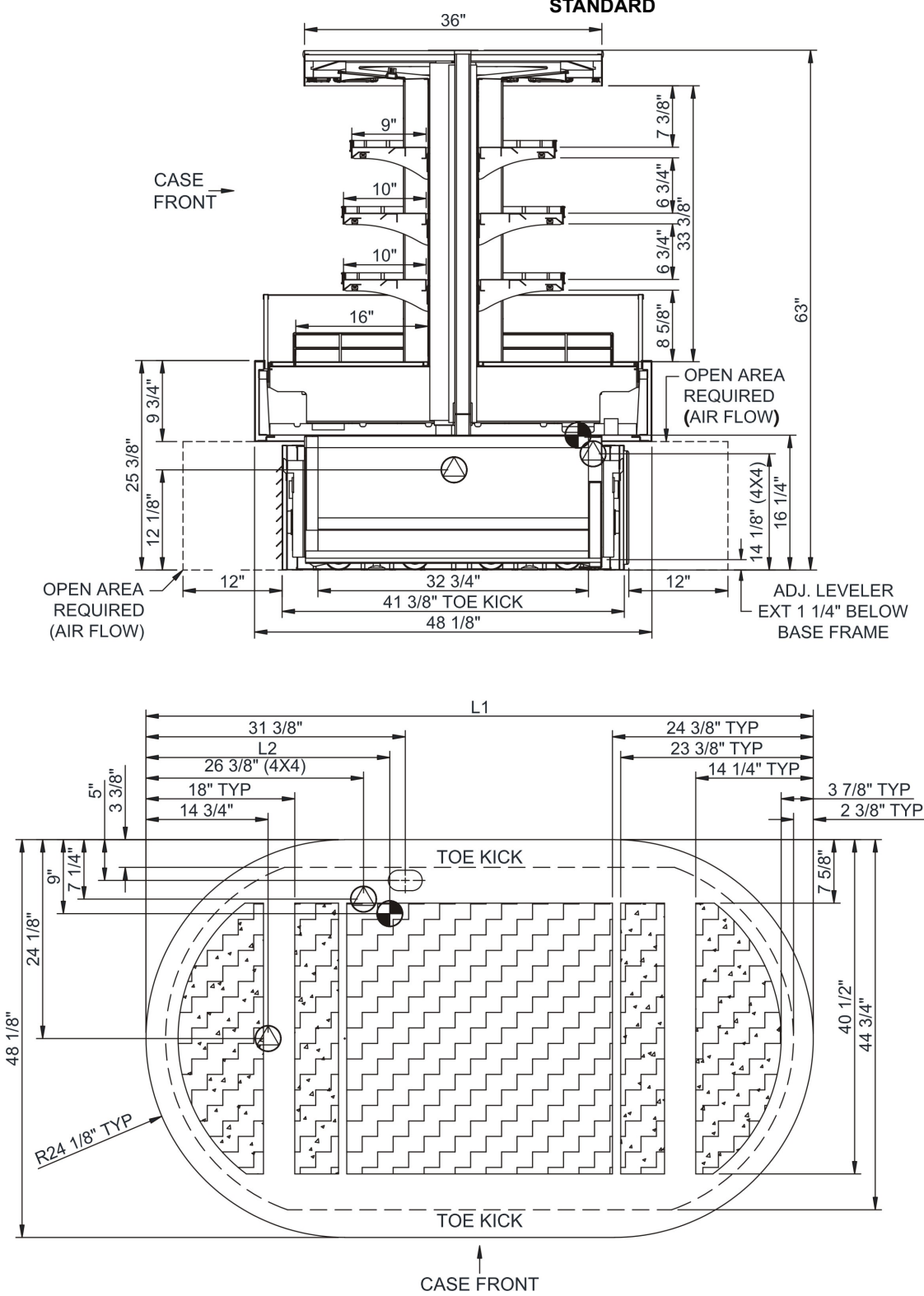
# Technical Information

Oasis - Refrigerated Self-Service Island

Structural Concepts®

DELIVERING FRESH. ALWAYS.™

## STANDARD



NOTE: ALL DIMENSIONS APPROXIMATE

- |  |  |   |
|--|--|---|
|  ELECTRICAL JUNCTION BOX (SUPPLIED WITH 6" LEADS OR POWER CORD).                      |  REFRIGERATION LINE CONNECTION.             |  SELF-CONTAINED CASE SERVICE ACCESS AREA. |
|  LOCATION OF DRAIN TUBE FOR REMOTE REF. ONLY (SUPPLIED WITH 3/4" OR 1 1/2" PVC TUBE). |  REMOTE FLOOR SINK & UTILITIES ACCESS AREA. |  DRY CASE SERVICE ACCESS AREA.            |