

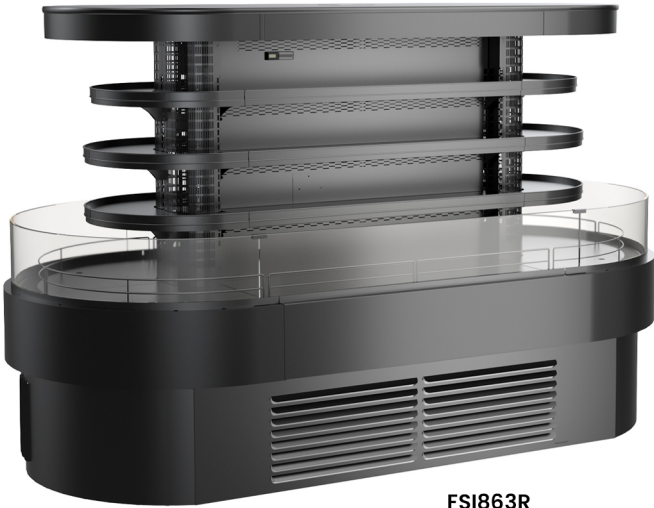
- FSI663R

80-3/4"L x 48-1/8"D x 63"H
- FSI863R

99-3/4"L x 48-1/8"D x 63"H

Included

- Breeze~E (Type-II) self-contained refrigeration
- Compressor air intake in one side & out other side. All louvered panels cannot be blocked
- Integrated average product temperature of 40°F or less
- LED 4000K top light(s)
- One year parts & labor; 5 year compressor warranty
- Price tag molding (matches interior color)
- Removable deck pans provide complete access to evaporator coil & refrigeration connections
- Vinyl T-edge (matches interior color)



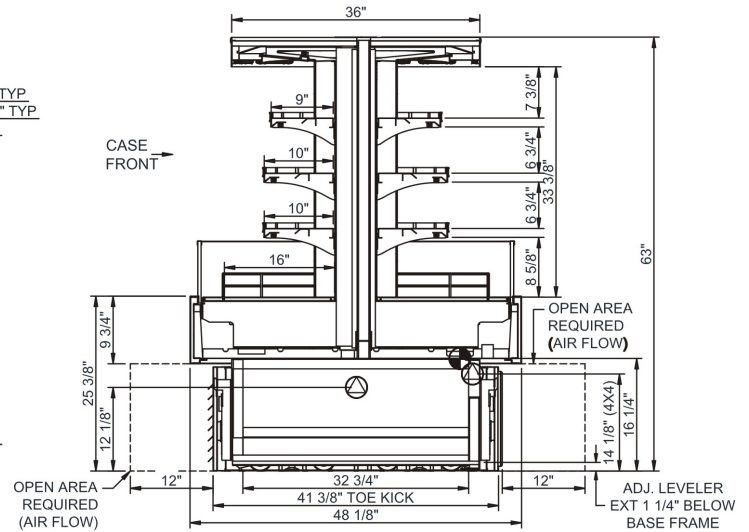
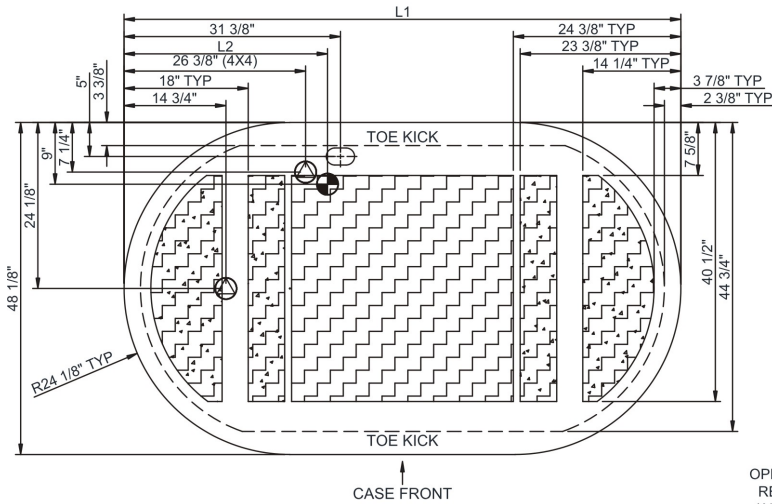
Specify	Standard Features	Additional Options
EXTERIOR COLOR	<ul style="list-style-type: none"><li>• Laminate (stock colors)</li></ul>	<ul style="list-style-type: none"><li>• Laminate (non-stock colors)</li><li>• Stainless steel</li></ul>
INTERIOR COLOR	<ul style="list-style-type: none"><li>• Powder coated Silversan Black</li></ul>	<ul style="list-style-type: none"><li>• Stainless steel</li></ul>
LOWER FRONT PANEL COLOR	<ul style="list-style-type: none"><li>• Powder coated Silversan Black</li></ul>	<ul style="list-style-type: none"><li>• Stainless steel (must choose stainless exterior)</li></ul>
BASE SUPPORT	<ul style="list-style-type: none"><li>• Levelers</li></ul>	<ul style="list-style-type: none"><li>• Casters (self-cont.)</li></ul>
SHELVING	<ul style="list-style-type: none"><li>• Non-adjustable metal shelves, non-lighted</li></ul>	<ul style="list-style-type: none"><li>• Non-adjustable metal shelves, lighted (LED 4000K)</li></ul>
ELECTRICAL CONNECTION	<ul style="list-style-type: none"><li>• 6' Straight blade power cord (self-cont.)</li></ul>	<ul style="list-style-type: none"><li>• 6' Locking power cord (self-cont.)</li><li>• Electrical leads (remote)</li></ul>
REFRIGERATION	<ul style="list-style-type: none"><li>• Breeze~E (Type-II) self-contained refrigeration</li></ul>	<ul style="list-style-type: none"><li>• Note: Remote doesn't incl Conds unit. Floor drain reqd.</li><li>• Remote w/thermostat, solenoid &amp; TXV</li></ul>
MISCELLANEOUS		<ul style="list-style-type: none"><li>• Second year parts &amp; labor warranty (excludes compressor)</li></ul>

**Intended Environment:** Type II - Designed to operate in ambient conditions of 80°F and 55% relative humidity unless noted otherwise in system information below.

Zone	Intended Product To Be Displayed	Warmest Avg Prod Temp ° F
1	Packaged refrigerated products	40

PLAN VIEW

SIDE VIEW



**NOTE: ALL DIMENSIONS APPROXIMATE**

⊕ ELECTRICAL JUNCTION BOX  
(SUPPLIED WITH 6\" LEADS OR POWER CORD).

⦿ LOCATION OF DRAIN TUBE FOR REMOTE REF.  
ONLY (SUPPLIED WITH 3/4\" OR 1 1/2\" PVC TUBE).

⊕ REFRIGERATION LINE CONNECTION.

⦿ REMOTE FLOOR SINK & UTILITIES  
ACCESS AREA.

⦿ SELF-CONTAINED CASE SERVICE ACCESS AREA.

⦿ DRY CASE SERVICE ACCESS AREA.

Model Technical Specifications														
Model	L"	L1"	L2"	System Circuit Volts			Phs	Freq	Amps ***	Watts	Wires	NEMA Plug	SST	Conv. Rack BTU/H
FSI663R	N/A	80.75	32.75	Remote (N/A)	Circuit #1	110-120	1	60	5.45	425	2+G	Leads Multiple	20.00	13478
				Self-Contained (R449A)	Circuit #1	208-240	1	60	22.78	4,739	2+G	6-30P	N/A	N/A
FSI863R	N/A	99.75	39.88	Remote (DX)	Circuit #1	110-120	1	60	8.57	548	2+G	Leads Multiple	20.00	19440
				Self-Contained (R449A)	Circuit #1	208-240	1	60	24.00	4,925	2+G	6-30P or L6-30P	N/A	N/A
														Est Wt

\*\*\* Does not include electric defrost on freezer models.

**Regulatory Approvals:**

All Models  
 Accordance with AHRI Std 1200  
 ETL Listed to UL 471  
 ETL Listed to CAN/CSA 22.2 No. 120  
 ETL Sanitation to NSF/ANSI 7

**Important Notes:**

- 1) ELECTRICAL NOTE: If GFCI is required, a GFCI breaker MUST be used in lieu of a GFCI receptacle
- 2) NOTE: Electrical specs reflect highest Amp draw using lighted shelves option

**⚠ WARNING:** This product can expose you to chemicals, including Urethane (Ethyl Carbamate), which are known to the State of California to cause cancer and birth defects or other reproductive harm. For more information go to [www.P65Warnings.ca.gov](http://www.P65Warnings.ca.gov).



In Accordance with  
**AHRI Std 1200**

**DOE 2017**  
Energy Efficiency  
Compliant