

# Technical Information

Oasis - Refrigerated Self-Service Case

Structural Concepts®

DELIVERING FRESH. ALWAYS.™

## DIMENSIONS / SHIPPING

Model	L"	L1"	L2"	Est Wt (lbs)
CO35R	34.000	36.250	3.125	N/A
CO45R	45.000	47.250	3.125	N/A
CO55R	57.000	59.250	3.125	N/A
CO65R	69.000	71.250	3.125	N/A

## ELECTRICAL

Model	System Circuit Volts			Ph	Frq	Rated Load Amps	Min Cir Amps	Max OCP Amps	Watts	Wires	NEMA Plug	Amps Lights	Amps Fans	Amps Anti-Sweats	Amps Misc/Refrig/Heat
CO35R	Remote (DX)	Circuit #1	110-120	1	60	1.15	15	15	55	2+G	Leads Multiple	0.70	0.31	0.14	N/A
	Remote (DX)	Circuit #1	110-120	1	60	1.15	15	15	55	2+G	Leads Multiple	0.70	0.31	0.14	N/A
CO45R	Self-Contained (R449A)	Circuit #1	110-120	1	60	14.66	20	20	1,239	2+G	5-20P or L5-20P	0.70	0.86	4.10	9.00
	Remote (DX)	Circuit #1	110-120	1	60	1.20	15	15	106	2+G	Leads Multiple	0.76	0.30	0.14	N/A
	Remote (DX)	Circuit #1	110-120	1	60	1.20	15	15	56	2+G	Leads Multiple	0.76	0.30	0.14	N/A
CO55R	Self-Contained (R449A)	Circuit #1	110-120	1	60	15.32	20	20	1,289	2+G	5-20P or L5-20P	0.70	1.52	4.10	9.00
	Remote (DX)	Circuit #1	110-120	1	60	1.51	15	15	136	2+G	Leads Multiple	0.99	0.30	0.22	N/A
	Remote (DX)	Circuit #1	110-120	1	60	1.51	15	15	136	2+G	Leads Multiple	0.99	0.30	0.22	N/A
CO65R	Self-Contained (R449A)	Circuit #1	110-120	1	60	16.00	20	20	1,508	2+G	5-20P or L5-20P	0.70	1.80	4.18	10.50
	Remote (DX)	Circuit #1	110-120	1	60	1.27	15	15	89	2+G	Leads Multiple	0.70	0.31	0.26	N/A
	Remote (DX)	Circuit #1	110-120	1	60	1.27	15	15	89	2+G	Leads Multiple	0.70	0.31	0.26	N/A
CO65R	Self-Contained (R449A)	Circuit #1	208-240	1	60	9.52	20	20	1,725	2+G	6-20P or L6-20P	0.36	0.76	2.30	6.10

## REFRIGERATION

Model	Zone	Section	System	Env't	REMOTE REFRIGERATION					GLYCOL / R744 REFRIGERATION			
					SST (°F)	Conv. Rack BTUH	Para. Rack BTUH	Defrost Interval (Hrs)	Defrost Duration	Total GPM	Pressure Drop (psi)	Concent (%)	Liquid Temp (°F)
CO35R	All	Main	Remote-DX	Type I	20	2,700	2,500	4.00	30.00	N/A	N/A	N/A	N/A
	All	Main	Remote-DX	Type II	20	3,283	3,040	4.00	30.00	N/A	N/A	N/A	N/A
	All	Main	Self-Contained-R449A	Type II	N/A	N/A	N/A	N/A	N/A	N/A	N/A	N/A	N/A
CO45R	All	Main	Remote-DX	Type I	20	3,499	3,240	4.00	30.00	N/A	N/A	N/A	N/A
	All	Main	Remote-DX	Type II	20	4,277	3,960	4.00	30.00	N/A	N/A	N/A	N/A
	All	Main	Self-Contained-R449A	Type I	N/A	N/A	N/A	N/A	N/A	N/A	N/A	N/A	N/A
CO55R	All	Main	Remote-DX	Type I	20	4,363	4,040	4.00	25.00	N/A	N/A	N/A	N/A
	All	Main	Remote-DX	Type II	20	5,335	4,940	4.00	25.00	N/A	N/A	N/A	N/A
	All	Main	Self-Contained-R449A	Type I	N/A	N/A	N/A	N/A	N/A	N/A	N/A	N/A	N/A
CO65R	All	Main	Remote-DX	Type I	20	5,162	4,780	4.00	30.00	N/A	N/A	N/A	N/A
	All	Main	Remote-DX	Type II	20	6,329	5,860	4.00	30.00	N/A	N/A	N/A	N/A
	All	Main	Self-Contained-R449A	Type I	N/A	N/A	N/A	N/A	N/A	N/A	N/A	N/A	N/A

## INTENDED ENVIRONMENT

Type II - Designed to operate in ambient conditions of 80°F and 55% relative humidity unless noted otherwise under Env't above.

## WARMEST AVERAGE PRODUCT TEMP & INTENDED USE OF ZONES

Zone	Temp (°F)	Intended Use
1	40	Packaged refrigerated products

## IMPORTANT NOTES

- 1) ELECTRICAL NOTE: If GFCI is required, a GFCI breaker MUST be used in lieu of a GFCI receptacle
- 2) Performance issues (product temperatures, water on floor, etc.) caused by adverse conditions are not covered by warranty.
- 3) Keep unit at least 15' from exterior doors, overhead HVAC vents, or any air curtain disruption.
- 4) End panels must be tightly joined or kept at least 6" away from any structure to prevent condensation.
- 5) Do not expose unit to direct sunlight or any heat source (ovens, fryers, etc.).
- 6) Keep at least 8" of clearance above unit for air discharge (self-contained only).
- 7) Tile floors, low ceilings, or small rooms will increase noise level. Remote refrigeration recommended.
- 8) Compressor air front intake, rear discharge. Front panel cannot be blocked. Must remain 4" from wall.

# Technical Information

Oasis - Refrigerated Self-Service Case

REGULATORY	
All Models	Accordance with AHRI Std 1200 ETL Listed to UL 471 ETL Listed to CAN/CSA 22.2 No. 120 ETL Sanitation to NSF/ANSI 7



In Accordance with  
AHRI Std 1200

NOTE: ALL DIMENSIONS APPROXIMATE

- ELECTRICAL JUNCTION BOX (SUPPLIED WITH 6" LEADS OR POWER CORD).
- REFRIGERATION LINE CONNECTION.
- SELF-CONTAINED CASE SERVICE ACCESS AREA.
- REMOTE FLOOR SINK & UTILITIES ACCESS AREA.
- DRY CASE SERVICE ACCESS AREA.
- LOCATION OF DRAIN TUBE FOR REMOTE REF. ONLY (SUPPLIED WITH 3/4" OR 1 1/2" PVC TUBE).

Technical Information

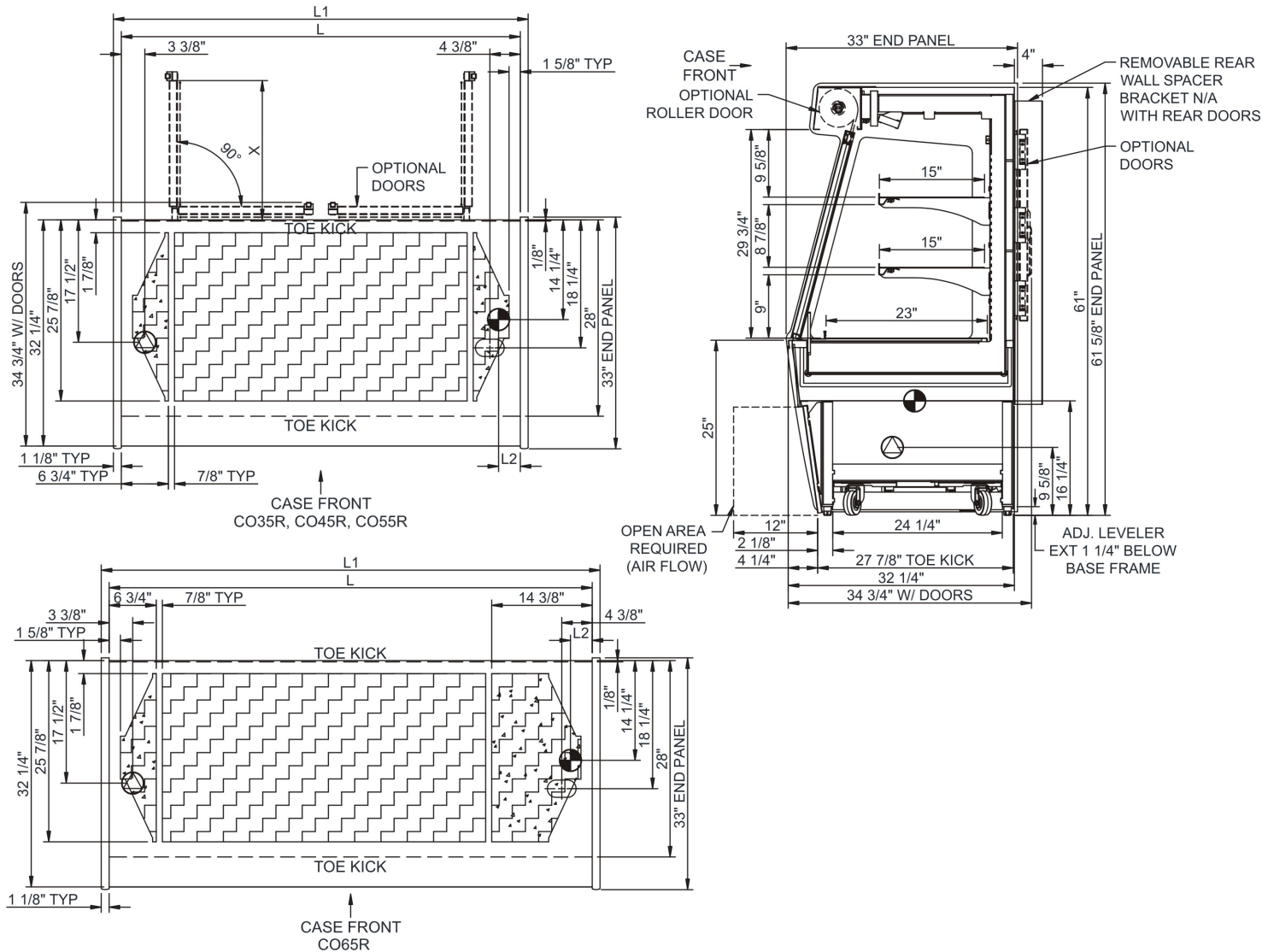
Oasis - Refrigerated Self-Service Case

Structural Concepts®

DELIVERING FRESH. ALWAYS.™

5' H MODEL

NOTE: CO35R - (X) = 30 1/8" - (1) DOOR LH HINGED  
CO45R - (X) = 19 3/4" - (2) DOORS RH & LH HINGED  
CO55R - (X) = 19 3/4" - (2) DOORS RH & LH HINGED  
CO65R - (X) = 30 1/8" - (2) DOORS RH & LH HINGED



NOTE: ALL DIMENSIONS APPROXIMATE

- |  |  |  |
|--|--|--|
| ELECTRICAL JUNCTION BOX (SUPPLIED WITH 6" LEADS OR POWER CORD).                      | REFRIGERATION LINE CONNECTION.             | SELF-CONTAINED CASE SERVICE ACCESS AREA. |
| LOCATION OF DRAIN TUBE FOR REMOTE REF. ONLY (SUPPLIED WITH 3/4" OR 1 1/2" PVC TUBE). | REMOTE FLOOR SINK & UTILITIES ACCESS AREA. | DRY CASE SERVICE ACCESS AREA.            |