

- **CO35R** 36-1/4"L x 33"D x 61-5/8"H
- **CO45R** 47-1/4"L x 33"D x 61-5/8"H
- **CO55R** 59-1/4"L x 33"D x 61-5/8"H
- **CO65R** 71-1/4"L x 33"D x 61-5/8"H

### Included

- Breeze~E (Type-II) self-contained refrigeration
- 4"D removable rear wall spacer (not included in depth dimension)
- Blue Fin coated coil
- Condensate pan (self-contained refig. only)
- Integrated average product temperature of 40°F or less
- LED 3500K top light(s)
- One piece formed ABS plastic tub
- One year parts & labor; 5 year compressor warranty
- Removable deck pans provide complete access to evaporator coil & refrigeration connections
- Shelving removable and adjustable on 1" centers



**CO45R**

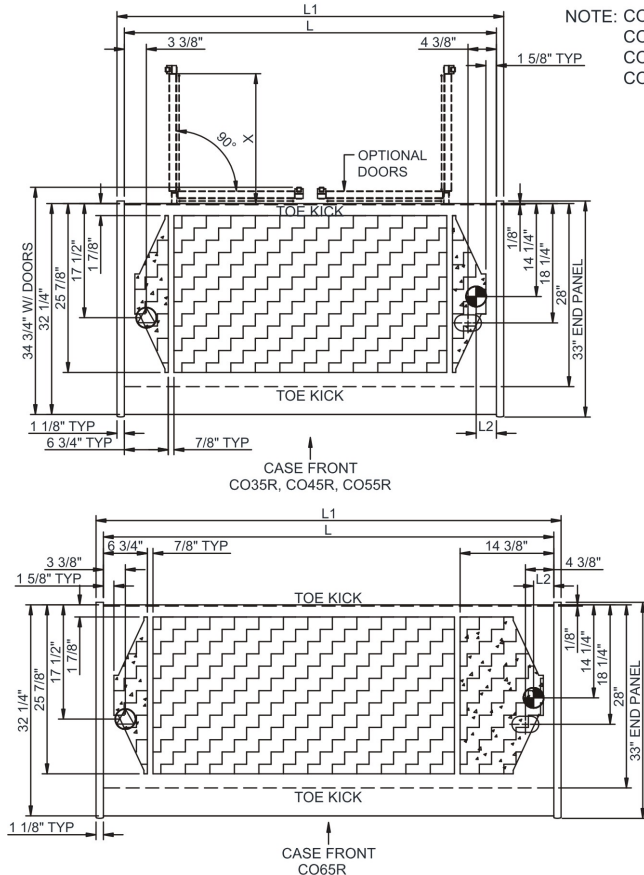
Specify	Standard Features	Additional Options
<b>EXTERIOR COLOR</b>	• Laminate (stock colors)	• Laminate (non-stock colors) • Stainless steel
<b>INTERIOR COLOR</b>	• Powder coated Silversan Black	• Stainless steel
<b>LOWER FRONT PANEL COLOR</b>	• Powder coated Silversan Black	• Stainless steel (must choose stainless exterior)
<b>REAR EXTERIOR COLOR</b>	• Black	• Stainless steel
<b>BASE SUPPORT</b>	• Casters w/ levelers (self-cont.)	• Levelers (only) • Seismic levelers
<b>END PANELS</b>	• Full w/stainless steel mirror interior	• Cutaway w/glass • None (synchronized defrost required)
<b>REAR DOORS</b>	• None (solid back panel)	• Rear loading hinged doors, locking
<b>SHELVING</b>	• Metal shelves (2), non-lighted	• Metal shelves (2), lighted (LED 3500K)
<b>ELECTRICAL CONNECTION</b>	• 6' Straight blade power cord (base exit)	• 6' Locking blade power cord (base exit) • 6' Locking blade power cord (top exit) • 6' Straight blade power cord (top exit) • Electrical leads (remote)
<b>REFRIGERATION</b>	• Breeze~E (Type-II) self-contained refrigeration	• Note: Remote doesn't incl Conds unit. Floor drain reqd. 1 • Remote w/thermostat, solenoid & TXV
<b>MISCELLANEOUS</b>		• Case height wall spacer bracket (specify BL or SS) • Roll-down security cover, locking (Requires two end panels (full or cutaway) per case) • Second year parts & labor warranty (excludes compressor)
<b>ACCESSORIES</b>		• Clean Sweep® coil cleaner (self-cont.) • Night curtain, retractable, non-locking • Price tag molding (matches interior color) • Removable solid security cover, locking

**Option Notes:** 1 - See tech spec for load reqmts

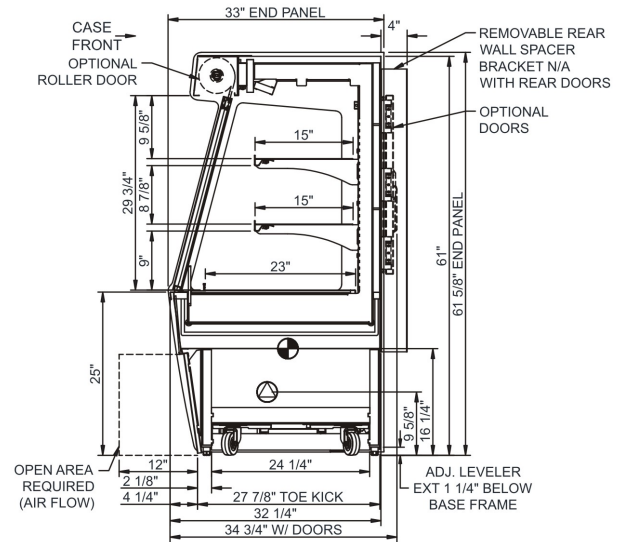
**Intended Environment:** Type II - Designed to operate in ambient conditions of 80°F and 55% relative humidity unless noted otherwise in system information below.

Zone	Intended Product To Be Displayed	Warmest Avg Prod Temp ° F
1	Packaged refrigerated products	40

### PLAN VIEW



### SIDE VIEW



### NOTE: ALL DIMENSIONS APPROXIMATE

- ELECTRICAL JUNCTION BOX (SUPPLIED WITH 6" LEADS OR POWER CORD).
- REMOTE FLOOR SINK & UTILITIES ACCESS AREA.
- LOCATION OF DRAIN TUBE FOR REMOTE REF. ONLY (SUPPLIED WITH 3/4" OR 1 1/2" PVC TUBE).
- SELF-CONTAINED CASE SERVICE ACCESS AREA.
- REFRIGERATION LINE CONNECTION.
- DRY CASE SERVICE ACCESS AREA.

### Model Technical Specifications

Model	L"	L1"	L2"	System Circuit Volts			Phs	Freq	Amps ***	Watts	Wires	NEMA Plug	SST	Conv. Rack BTU/H	Para. Rack BTU/H	Est Wt
CO35R	34.00	36.25	3.13	Remote (DX)	Circuit #1	110-120	1	60	1.15	55	2+G	Leads Multiple	20.00	3283	3040	750
				Self-Contained (R449A)	Circuit #1	110-120	1	60	14.66	1,239	2+G	5-20P or L5-20P	N/A	N/A	N/A	
CO45R	45.00	47.25	3.13	Remote (DX)	Circuit #1	110-120	1	60	1.20	56	2+G	Leads Multiple	20.00	4277	3960	800
				Self-Contained (R449A)	Circuit #1	110-120	1	60	15.32	1,289	2+G	5-20P or L5-20P	N/A	N/A	N/A	
CO55R	57.00	59.25	3.13	Remote (DX)	Circuit #1	110-120	1	60	1.51	136	2+G	Leads Multiple	20.00	5335	4940	950
				Self-Contained (R449A)	Circuit #1	110-120	1	60	16.00	1,508	2+G	5-20P or L5-20P	N/A	N/A	N/A	
CO65R	69.00	71.25	3.13	Remote (DX)	Circuit #1	110-120	1	60	1.27	89	2+G	Leads Multiple	20.00	6329	5860	1,100
				Self-Contained (R449A)	Circuit #1	208-240	1	60	9.52	1,725	2+G	6-20P or L6-20P	N/A	N/A	N/A	

\*\*\* Does not include electric defrost on freezer models.

### Regulatory Approvals:

All Models  
 Accordance with AHRI Std 1200  
 ETL Listed to UL 471  
 ETL Listed to CAN/CSA 22.2 No. 120  
 ETL Sanitation to NSF/ANSI 7



In Accordance with  
**AHRI Std 1200**

**DOE 2017**  
 Energy Efficiency  
 Compliant

### Important Notes:

- 1) ELECTRICAL NOTE: If GFCI is required, a GFCI breaker MUST be used in lieu of a GFCI receptacle
- 2) Performance issues (product temperatures, water on floor, etc.) caused by adverse conditions are not covered by warranty.
- 3) Keep unit at least 15' from exterior doors, overhead HVAC vents, or any air curtain disruption.
- 4) End panels must be tightly joined or kept at least 6" away from any structure to prevent condensation.
- 5) Do not expose unit to direct sunlight or any heat source (ovens, fryers, etc.).
- 6) Keep at least 8" of clearance above unit for air discharge (self-contained only).
- 7) Tile floors, low ceilings, or small rooms will increase noise level. Remote refrigeration recommended.
- 8) Compressor air front intake, rear discharge. Front panel cannot be blocked. Must remain 4" from wall.

**⚠ WARNING:** This product can expose you to chemicals, including Urethane (Ethyl Carbamate), which are known to the State of California to cause cancer and birth defects or other reproductive harm. For more information go to [www.P65Warnings.ca.gov](http://www.P65Warnings.ca.gov).