

Technical Information

Oasis - Refrigerated Self-Service Dual Sided Case

Structural Concepts®

DELIVERING FRESH. ALWAYS.™

DIMENSIONS / SHIPPING

Model	L"	L1"	L2"	Est Wt (lbs)
FSC463R	44.750	47.000	13.875	1,300
FSC663R	73.375	75.625	13.875	1,900

ELECTRICAL

Model	System Circuit Volts			Ph	Frq	Rated Load Amps	Min Cir Amps	Max OCP Amps	Watts	Wires	NEMA Plug	Amps Lights	Amps Fans	Amps Anti-Sweats	Amps Misc/Refrig/Heat
FSC463R	Remote (DX)	Circuit #1	110-120	1	60	2.96	15	15	180	2+G	Leads Single	1.40	1.20	0.36	N/A
	Self-Contained (R449A)	Circuit #1	208-240	1	60	14.17	20	20	2,182	2+G	6-20P or L6-20P	0.72	1.36	3.59	8.50
FSC663R	Remote (R404A)	Circuit #1	110-120	1	60	3.46	15	15	250	2+G	Leads Single	1.40	1.80	0.26	N/A
	Self-Contained (R449A)	Circuit #1	208-240	1	60	20.04	30	30	4,019	2+G	6-30P or L6-30P	0.72	2.04	7.48	9.80

REFRIGERATION

Model	Zone	Section	System	Env't	REMOTE REFRIGERATION					GLYCOL / R744 REFRIGERATION			
					SST (°F)	Conv. Rack BTUH	Para. Rack BTUH	Defrost Interval (Hrs)	Defrost Duration	Total GPM	Pressure Drop (psi)	Concent (%)	Liquid Temp (°F)
FSC463R	All	Main	Remote-DX	Type II	20	7,690	7,120	4.00	25.00	N/A	N/A	N/A	N/A
	All	Main	Self-Contained-R449A	Type II	N/A	N/A	N/A	N/A	N/A	N/A	N/A	N/A	N/A
FSC663R	All	Main	Remote-R404A	Type I	20	10,800	10,000	4.00	25.00	N/A	N/A	N/A	N/A
	All	Main	Self-Contained-R449A	Type I	N/A	N/A	N/A	N/A	N/A	N/A	N/A	N/A	N/A

INTENDED ENVIRONMENT

Type II - Designed to operate in ambient conditions of 80°F and 55% relative humidity unless noted otherwise under Env't above.

WARMEST AVERAGE PRODUCT TEMP & INTENDED USE OF ZONES

Zone	Temp (°F)	Intended Use
1	40	Packaged refrigerated products

REGULATORY

All Models	Accordance with AHRI Std 1200 ETL Listed to UL 471 ETL Listed to CAN/CSA 22.2 No. 120 ETL Sanitation to NSF/ANSI 7
------------	-----------------------------------------------------------------------------------------------------------------------------



In Accordance with
AHRI Std 1200

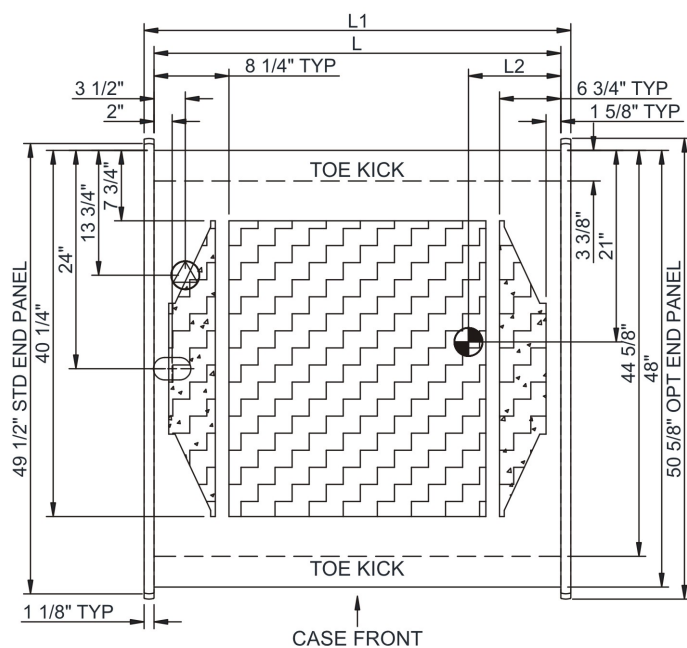
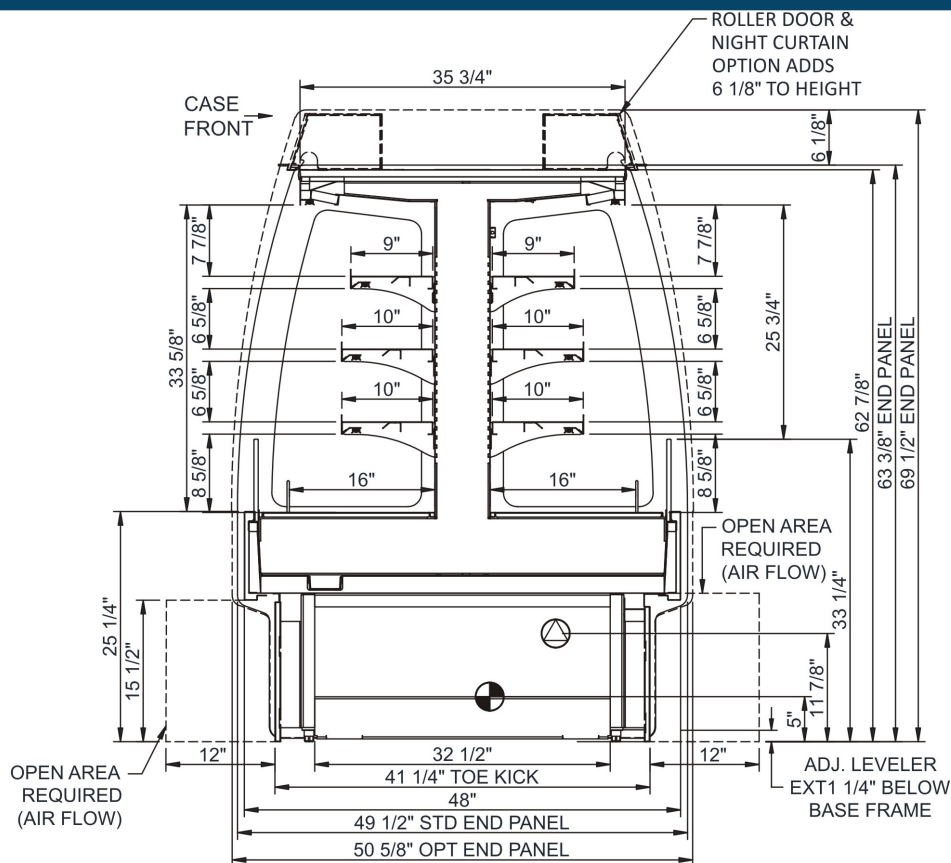
IMPORTANT NOTES

- 1) ELECTRICAL NOTE: If GFCI is required, a GFCI breaker MUST be used in lieu of a GFCI receptacle
- 2) Electrical specs reflect highest Amp draw using lighted shelves option.
- 3) Compressor air intake in one side & out other side. All louvered panels cannot be blocked.

Oasis - Refrigerated Self-Service Dual Sided Case

Structural Concepts®

DELIVERING FRESH. ALWAYS.™



NOTE: ALL DIMENSIONS APPROXIMATE

- | | | | | | |
|-------------------------------------------------------------------------------------|------------------------------------------------------------------------------------------------|-------------------------------------------------------------------------------------|-------------------------------------------------------|-------------------------------------------------------------------------------------|-------------------------------------------------|
|  | ELECTRICAL JUNCTION BOX
(SUPPLIED WITH 6" LEADS OR POWER CORD). |  | REFRIGERATION LINE CONNECTION. |  | SELF-CONTAINED CASE SERVICE ACCESS AREA. |
|  | LOCATION OF DRAIN TUBE FOR REMOTE REF.
ONLY (SUPPLIED WITH 3/4" OR 1 1/2" PVC TUBE). |  | REMOTE FLOOR SINK & UTILITIES ACCESS AREA. |  | DRY CASE SERVICE ACCESS AREA. |