

- **FSC463R** 47"L x 49-1/2"D x 63-3/8"H
- **FSC663R** 75-5/8"L x 49-1/2"D x 63-3/8"H

Included

- Breeze~E (Type-II) self-contained refrigeration
- 6' Power cord
- Blue Fin coated coil
- Casters w/ levelers
- LED 3500K top light(s)
- NOTE: Electrical specs reflect highest Amp draw using lighted shelves option
- One year parts & labor; 5 year compressor warranty
- Price tag molding (matches interior color)
- Removable deck pans provide complete access to evaporator coil & refrigeration connections



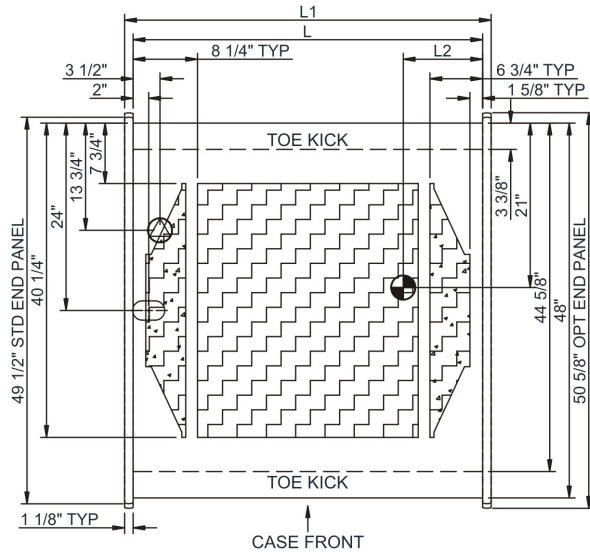
FSC463R

Specify	Standard Features	Additional Options
EXTERIOR COLOR	<ul style="list-style-type: none"> • Laminate (stock colors) 	<ul style="list-style-type: none"> • Laminate (non-stock colors) • Stainless steel
INTERIOR COLOR	<ul style="list-style-type: none"> • Powder coated Silversan Black 	<ul style="list-style-type: none"> • Stainless steel
LOWER FRONT PANEL COLOR	<ul style="list-style-type: none"> • Powder coated Silversan Black 	<ul style="list-style-type: none"> • Stainless steel (must choose stainless exterior)
END PANELS	<ul style="list-style-type: none"> • Full w/stainless steel mirror interior 	<ul style="list-style-type: none"> • Cutaway w/glass
SHELVING	<ul style="list-style-type: none"> • Non-adjustable metal shelves, non-lighted 	<ul style="list-style-type: none"> • Non-adjustable metal shelves, lighted (LED 3500K)
ELECTRICAL CONNECTION	<ul style="list-style-type: none"> • 6' Straight blade power cord (self-cont.) 	<ul style="list-style-type: none"> • 6' Locking power cord (self-cont.) • Electrical leads (remote)
REFRIGERATION	<ul style="list-style-type: none"> • Breeze~E (Type-II) self-contained refrigeration 	<ul style="list-style-type: none"> • Remote DX refrigeration
MISCELLANEOUS		<ul style="list-style-type: none"> • Roll-down security cover, locking (inc. ht. to 69-1/2") (2) • Second year parts & labor warranty
ACCESSORIES		<ul style="list-style-type: none"> • Night curtain, retractable, non-locking (inc. ht. to 69-1/2") (2) • Removable solid security cover, locking (2)

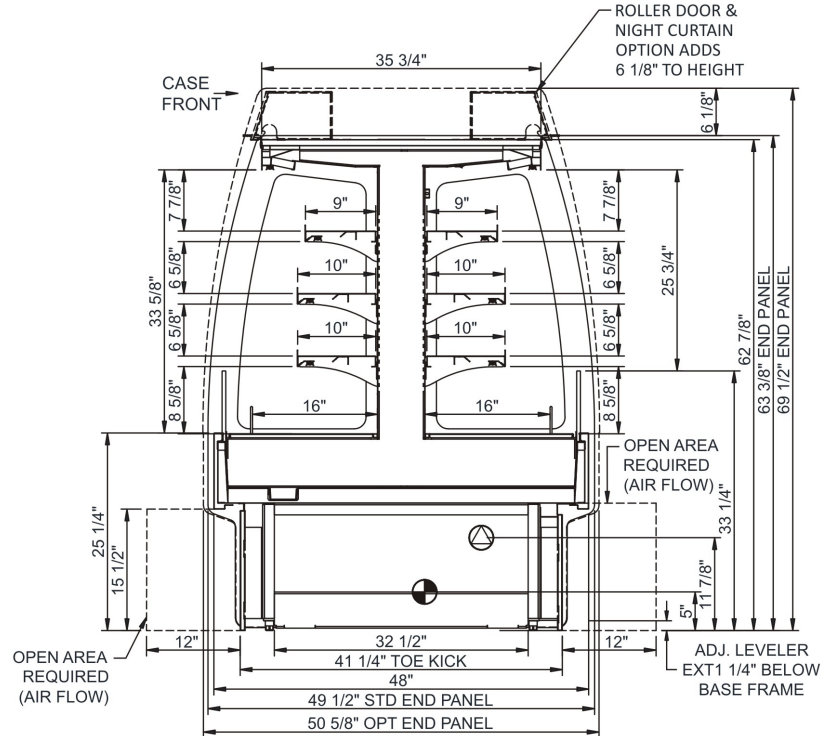
Intended Environment: Type II - Designed to operate in ambient conditions of 80°F and 55% relative humidity unless noted otherwise in system information below.

Zone	Intended Product To Be Displayed	Warmest Avg Prod Temp ° F
1	Packaged refrigerated products	40

PLAN VIEW



SIDE VIEW



NOTE: ALL DIMENSIONS APPROXIMATE

⊗ ELECTRICAL JUNCTION BOX
(SUPPLIED WITH 6" LEADS OR POWER CORD).
⊙ LOCATION OF DRAIN TUBE FOR REMOTE REF.
ONLY (SUPPLIED WITH 3/4" OR 1 1/2" PVC TUBE).

⊕ REFRIGERATION LINE CONNECTION.
⊞ REMOTE FLOOR SINK & UTILITIES
ACCESS AREA.

⊞ SELF-CONTAINED CASE SERVICE ACCESS AREA.
⊞ DRY CASE SERVICE ACCESS AREA.

Model Technical Specifications													
Model	L"	L1"	L2"	System Circuit Volts		Phs	Freq	Amps ***	Watts	Wires	NEMA Plug	SST	Conv. Rack BTU/H
FSC463R	44.75	47.00	13.88	Remote (DX)	Circuit #1	110-120	1	60	2.96	180	2+G	Leads Single	20.00
				Self-Contained (R449A)	Circuit #1	208-240	1	60	14.17	2,182	2+G	6-20P or L6-20P	N/A
FSC663R	73.38	75.63	13.88	Remote (R404A)	Circuit #1	110-120	1	60	3.46	250	2+G	Leads Single	20.00
				Self-Contained (R449A)	Circuit #1	208-240	1	60	20.04	4,019	2+G	6-30P or L6-30P	N/A
													7690
													10800
													10000
													N/A
													N/A
													N/A
													1,300
													1,900

*** Does not include electric defrost on freezer models.

Regulatory Approvals:

All Models
 Accordance with AHRI Std 1200
 ETL Listed to UL 471
 ETL Listed to CAN/CSA 22.2 No. 120
 ETL Sanitation to NSF/ANSI 7



In Accordance with
AHRI Std 1200

DOE 2017
 Energy Efficiency
 Compliant

Important Notes:

- 1) ELECTRICAL NOTE: If GFCI is required, a GFCI breaker MUST be used in lieu of a GFCI receptacle
- 2) Electrical specs reflect highest Amp draw using lighted shelves option.
- 3) Compressor air intake in one side & out other side. All louvered panels cannot be blocked.

⚠ WARNING: This product can expose you to chemicals, including Urethane (Ethyl Carbamate), which are known to the State of California to cause cancer and birth defects or other reproductive harm. For more information go to www.P65Warnings.ca.gov.