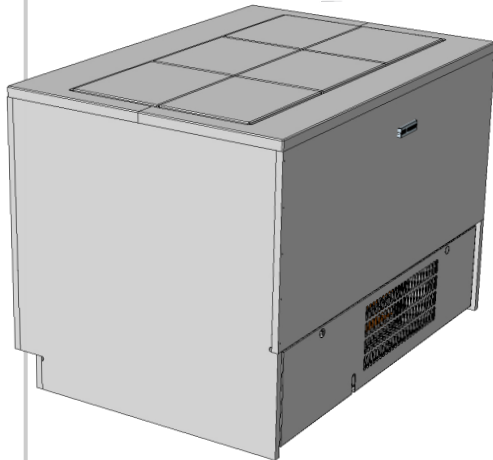


# Reveal<sup>®</sup>

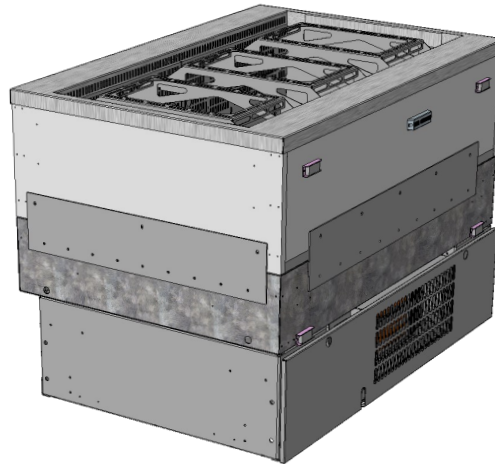
## MODEL NEXX00RX COUNTER AND DECK ASSEMBLY INSTALLATION GUIDE

- SLIDE-IN REFRIGERATED WELL CASE WITH REFRIGERATED AND AMBIENT MODES
- > CUSTOMER-SUPPLIED SNEEZE GUARD IS ATTACHED TO COUNTERTOP IN FIELD
  - > STONE, CORIAN<sup>®</sup> SOLID SURFACE, AND/OR STAINLESS STEEL DECKS ARE CUSTOMER-SUPPLIED AND ARE TO BE ATTACHED TO CASE IN THE FIELD
  - > SEE SCC P/N 20-98167 FOR MODEL NEXX00RX USER MANUAL.

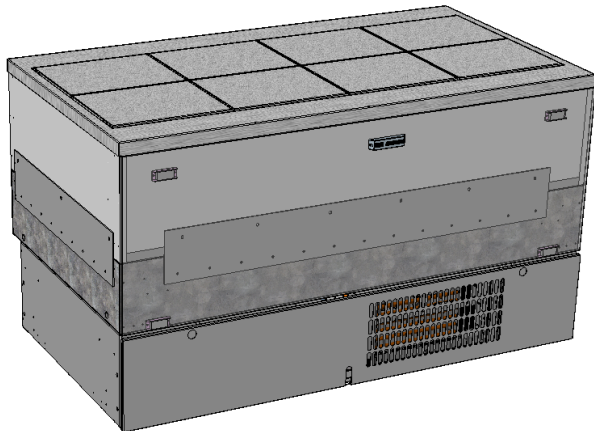
**SCC P/N  
20-98479**



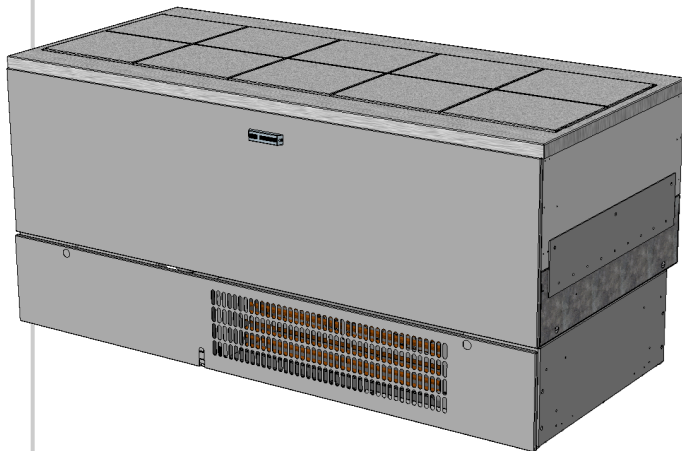
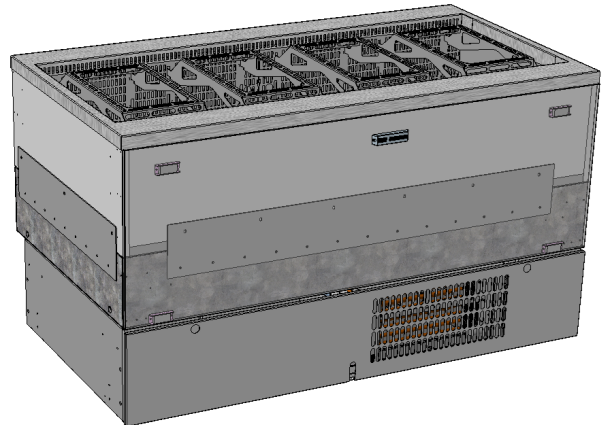
Model  
NE4800R3



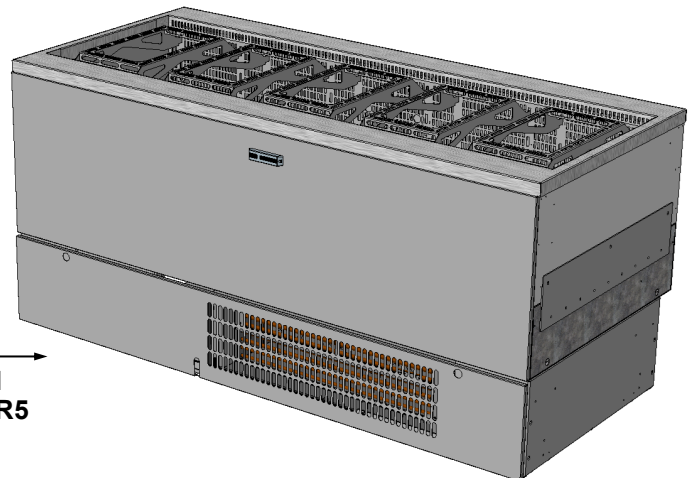
**NOTE:  
SEE SCC  
P/N 20-98167  
FOR  
NEXX00RX  
USER  
MANUAL.**



Model  
NE6000R4



Model  
NE7200R5



**Structural Concepts<sup>®</sup>**

DELIVERING FRESH. ALWAYS.™

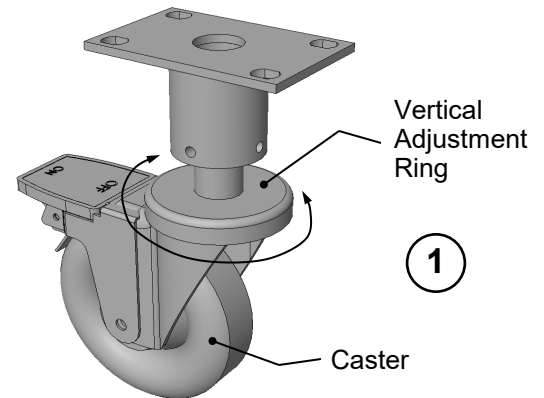
Structural Concepts Corp. · 888 E. Porter Rd · Muskegon, MI 49441 Phone: 231.798.8888 Fax: 231.798.4960 · www.structuralconcepts.com

## TABLE OF CONTENTS

TABLE OF CONTENTS .....	2
CASTERS: RAISING AND LOWERING / UNLOCKING AND LOCKING .....	3
AIRFLOW CLEARANCE REQUIREMENTS OF CLADDING / REMOVABLE FRONT TOE-KICK .....	4
COUNTERTOP: APPLYING SILICONE / CASE HEIGHT ADJUSTABILITY / SLIDING CASE UNDER COUNTER .....	5
DECK BASES / DECK BASE COVERS / SEALING COVERS TO BASES / DECK ASSEMBLY PLACEMENT .....	6
COUNTERTOP OPENING SIZE / DECK ASSEMBLY SIZE - MODEL NE4800R3 ONLY .....	7
COUNTERTOP OPENING SIZE / DECK ASSEMBLY SIZE - MODEL NE6000R4 ONLY .....	8
COUNTERTOP OPENING SIZE / DECK ASSEMBLY SIZE - MODEL NE7200R5 ONLY .....	9
DECK ASSEMBLY REMOVAL / REPLACEMENT .....	10

### **1. Caster Height: Raising and Lowering**

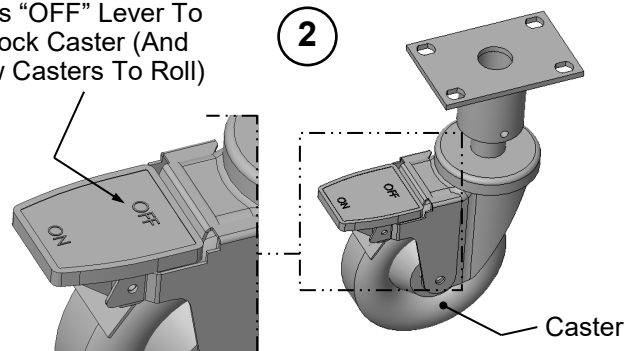
- Raise or lower casters (to adjust case height) by rotating casters' vertical adjustment rings.
  - Rotate vertical adjustment ring clockwise to lower caster (and increase height of case).
  - Rotate vertical adjustment ring counter-clockwise to raise caster (and decrease height of case).



### **2. Caster Rolling Capability: Unlocking**

- Important! Case is shipped with caster mechanisms factory set at **ON** (locked) to prevent case from rolling.
- Unlock casters by pressing **OFF** on the caster mechanism.
- See illustration at right.

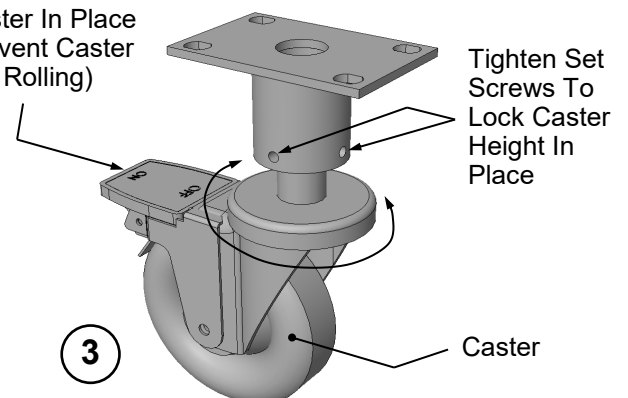
Press "OFF" Lever To  
Unlock Caster (And  
Allow Casters To Roll)



### **3. Casters: Locking**

- After case is at desired position (and height), use level to check that case is level and plumb.
- Readjust height as needed (as instructed in step #3 on previous page).
- **Locking Height:** After proper height/position of case is attained, tighten the two (2) set screws to lock each caster's height in place.
- **Locking Movement:** Then, to prevent casters' rolling capability, lock casters by pressing ON atop the "ON" and "OFF" lever mechanism (shown at right).
- Case will now be secured at its new location.

Press "ON" Lever To  
Lock Caster In Place  
(And Prevent Caster  
From Rolling)



## AIRFLOW CLEARANCE REQUIREMENTS OF CLADDING / REMOVABLE FRONT TOE-KICK

### Airflow Clearance Requirements Of Cladding

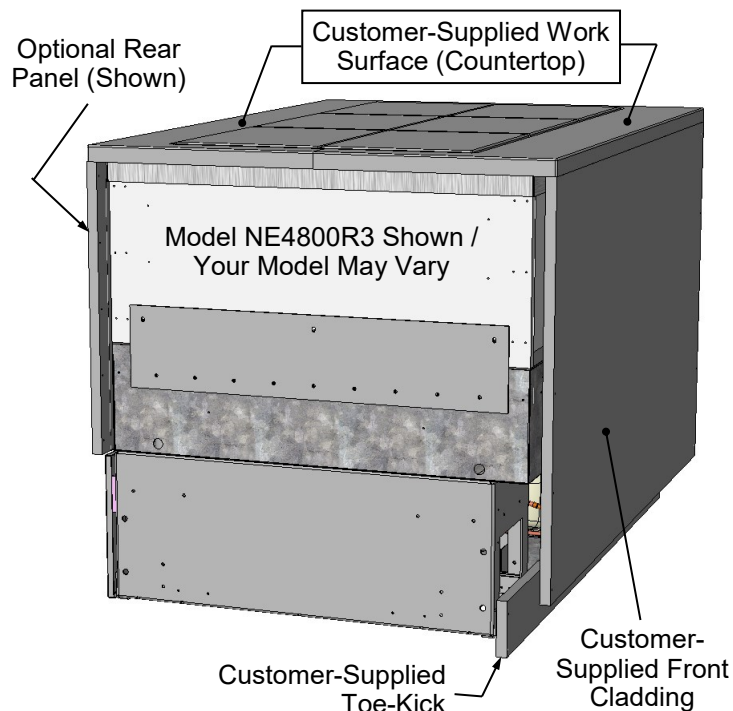
#### AIRFLOW CLEARANCE REQUIREMENTS / REAR INTAKE UNIT SHOWN

A	Cladding/cabinetry <b>MUST</b> provide access space to allow rear slide-out of condenser package (or front slide-out package, depending upon options chosen). Carefully measure before building!
B	<u>Note:</u> Rear intake/rear condenser package access is shown. Instructions are also conversely applicable to front intake/front condenser package units.
C	1 1/2" minimum space from sides of case to internal sides of cabinetry is required for adequate airflow for units with front toe-kick exhaust only.
D	2 3/4" minimum unobstructed toe-kick opening is required for adequate airflow for units with front toe-kick exhaust only.

#### AIRFLOW INTAKE & EXHAUST REQUIREMENTS

MODEL	MINIMUM INTAKE (in <sup>2</sup> )~	MINIMUM EXHAUST (in <sup>2</sup> )~
NE4800R3	96	132
NE6000R4	96	132
NE7200R5	96	132

--- Airflow Clearance Requirements ---  
(Perspective View) / Model NE4800R3  
Shown Below / Your Model May Vary



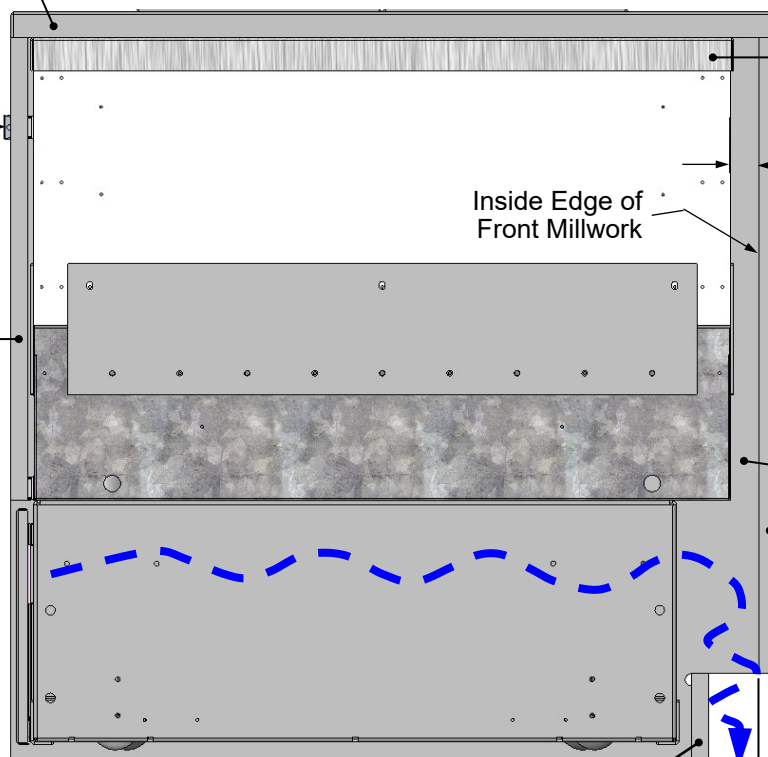
Customer-Supplied  
Work Surface  
(Countertop)

Thermometer

--- Case Rear ---

Optional Rear  
Panel (Shown)

REAR INTAKE:  
SEE NOTES  
A & B



--- Airflow Clearance Requirements ---  
(Side View) / Model NE4800R3  
Shown Above / Your Model May Vary

**Important! Front toe-kick  
must be removable to  
allow access to  
front casters (for  
adjustment purposes).**

SEE NOTE D

### **1. Apply Silicone To Top of Case**

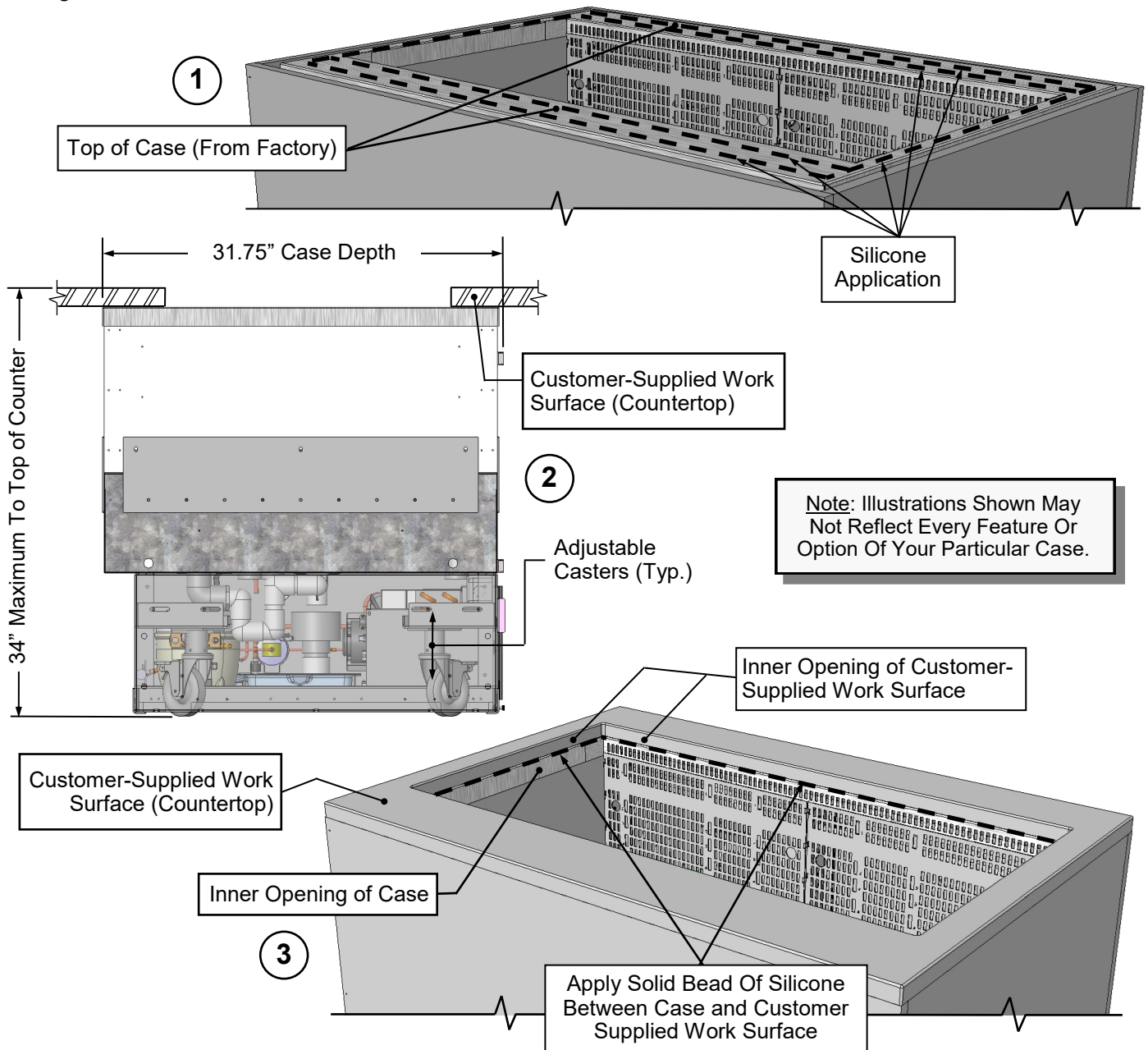
- Apply thick bead of silicone to top of case.
- Use only silicone that meets or exceeds food grade NSF/ANSI Standard 51.

### **2. Case Height Adjustability**

- At median caster height, case is 32.63" high, with 3/8" adjustability upward and downward.
- Customer-supplied counter thickness should not exceed 3 cm (1.18").
- Case height is designed to be adjusted (via casters) to 34" MAXIMUM TOP OF COUNTER height.

### **3. Slide Case Under Counter**

- Case is to be slid under customer-supplied work surface.
- Casters must then be adjusted so case is flush with underside of customer-supplied work surface (dimensions provided in previous step).
- See **CASTERS: RAISING AND LOWERING / UNLOCKING AND LOCKING** section for specifics on raising/lowering casters.





### **1. Deck Bases**

- Deck bases are SCC-Supplied.
- Silicone sealant is to be applied to TOP of deck bases (as directed in step #10).

### **2. Deck Base Covers**

- Deck base covers are customer-supplied.
- Deck base covers can vary in height and material (stone, quartz, stainless steel, etc.).
- Silicone sealant must be used to adhere deck base covers to deck bases.

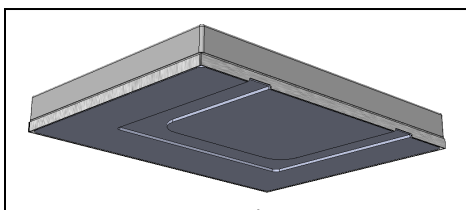
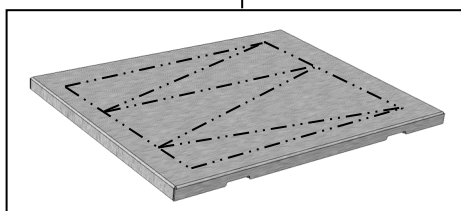
### **3. Sealing Deck Base Covers To Deck Bases**

- Use ONLY silicone that meets or exceeds food grade NSF/ANSI Standard 51.
- Apply sealant in pattern shown in illustrations below.
- Press deck base covers FIRMLY against deck bases to assure secure adhesion.

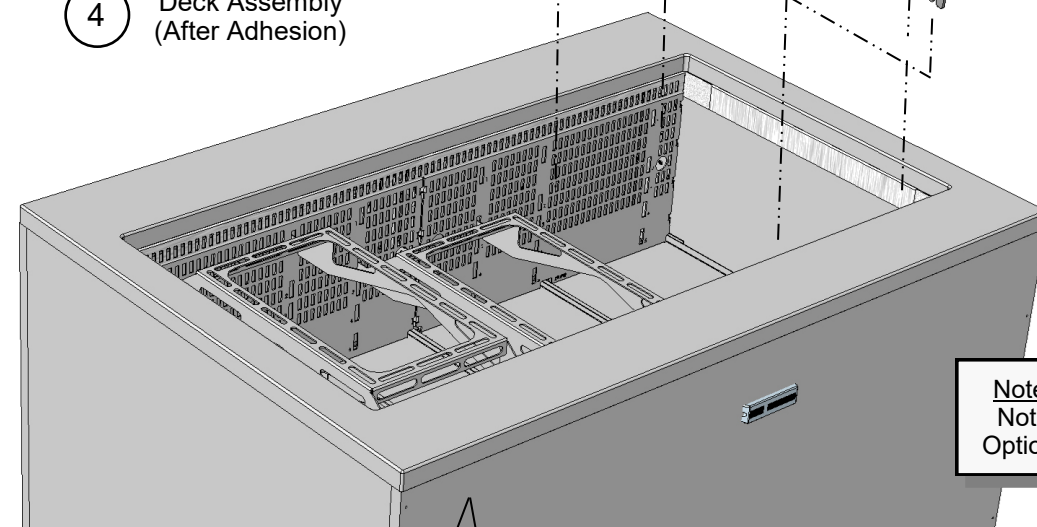
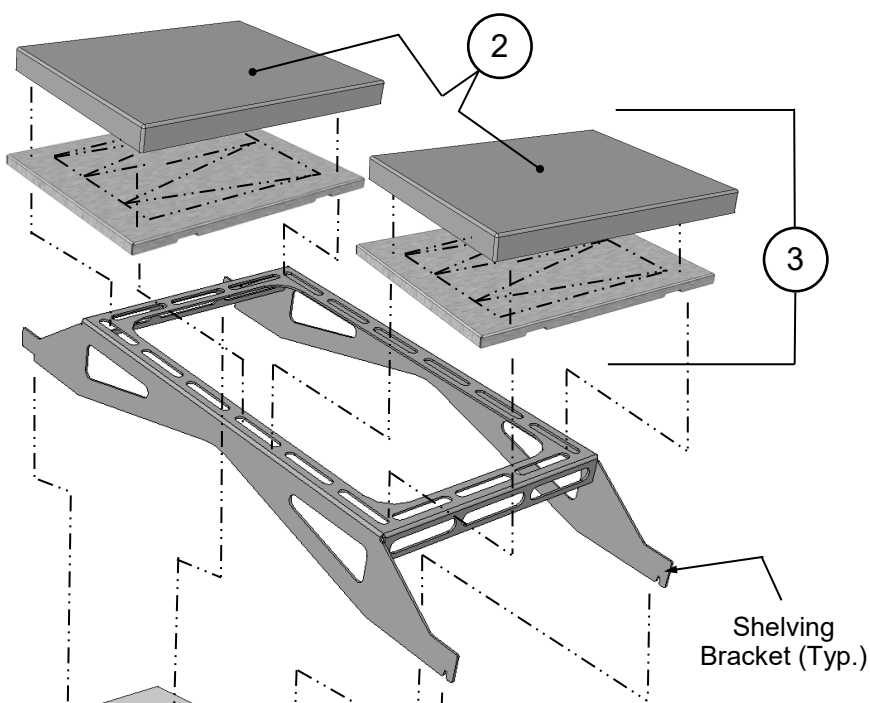
### **4. Deck Assembly Placement**

- After proper adhesion, these DECK ASSEMBLIES are to be positioned on shelving.
- Grooves are provided in underside of deck bases so they will rest securely on shelving brackets.

- 1 Apply Thick Bead of Silicone Sealant To Top of Deck Bases (In Pattern Shown).



- 4 Deck Assembly (After Adhesion)



Note: Illustrations Shown May Not Reflect Every Feature Or Option Of Your Particular Case.

## COUNTERTOP OPENING SIZE / DECK ASSEMBLY SIZE - MODEL NE4800R3 (ONLY)

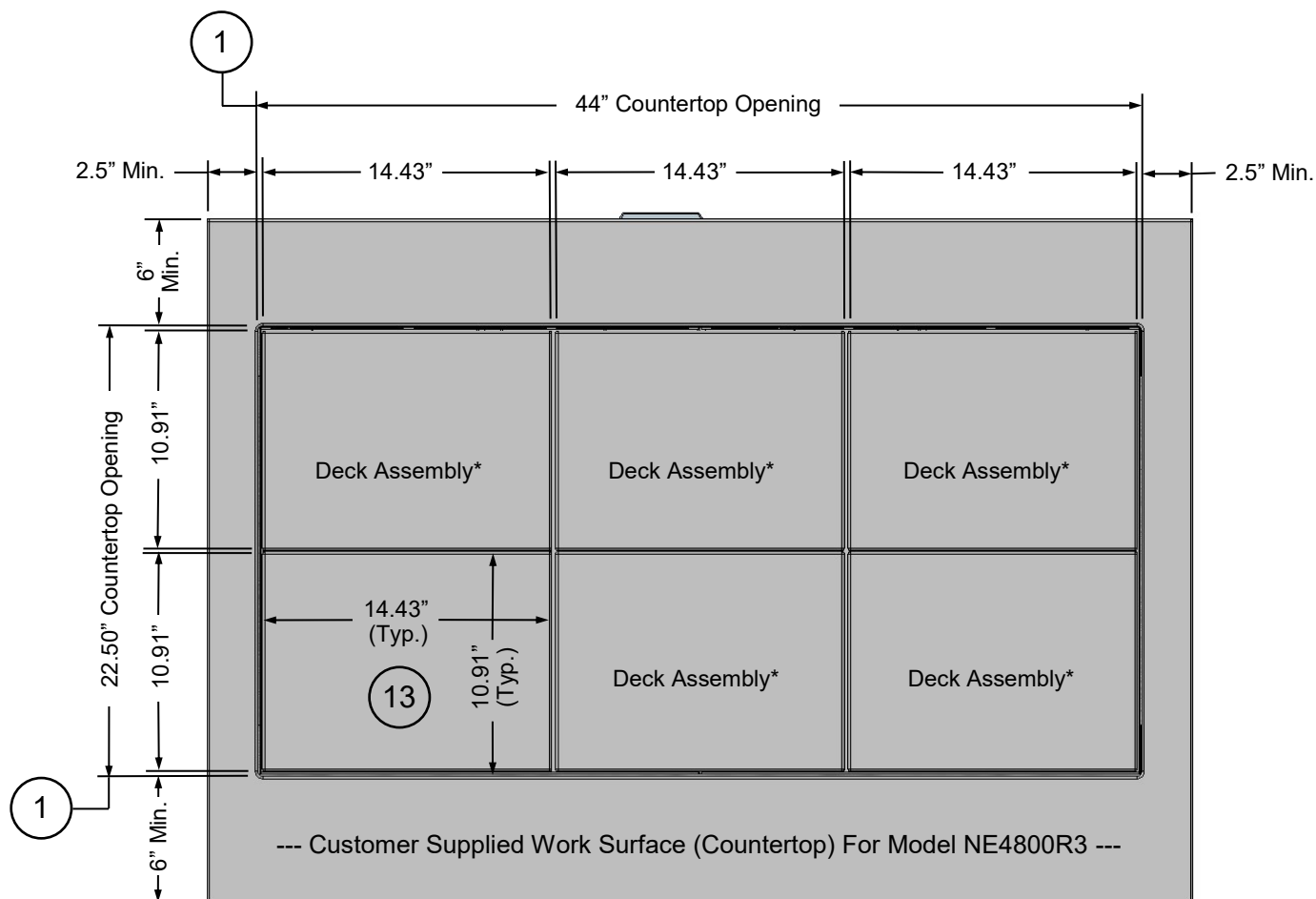
### 1. Countertop Opening Size - Model NE4800R3

- Countertop (work surface) is customer-supplied.
- Overall openings coincide with deck assembly size.

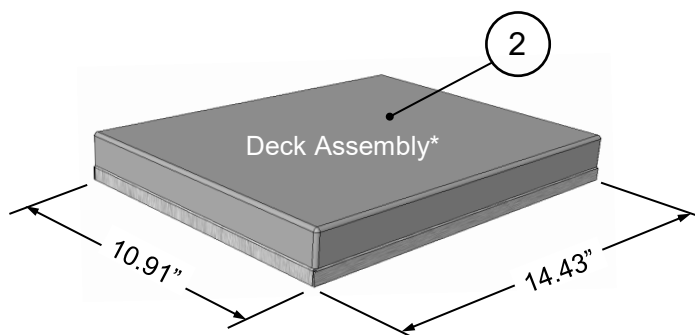
### 2. Deck Assembly Size - Model NE4800R3

- Each deck assembly is 10.91" x 14.43" in size.
- Each deck assembly is created after deck base cover has been attached (via silicone) to deck base.

- Deck assembly placement must coincide with countertop's (work surface's) overall opening size.
- Deck assembly placement **MUST** allow adequate space between deck assemblies **AS WELL AS** between deck assemblies and work surface (countertop).
- See illustration below.



\*Model NE4800R3 shown above. Deck assemblies **MUST** allow adequate space between deck assemblies **AS WELL AS** between deck assemblies and work surface (countertop).



## COUNTERTOP OPENING SIZE / DECK ASSEMBLY SIZE - MODEL NE6000R4 (ONLY)

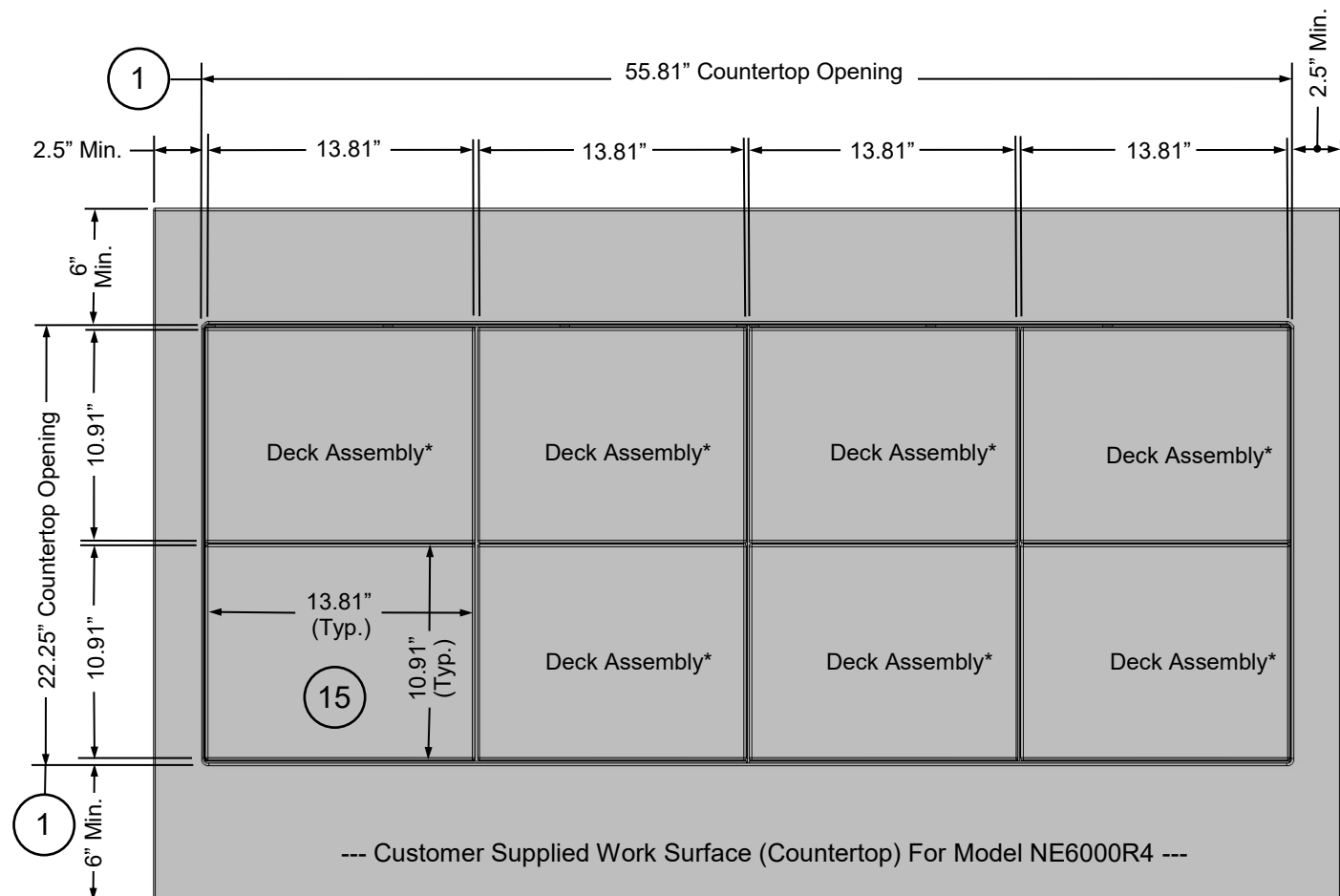
### 1. Countertop Opening Size - Model NE6000R4

- Countertop (work surface) is customer-supplied.
- Overall openings coincide with deck assembly size.

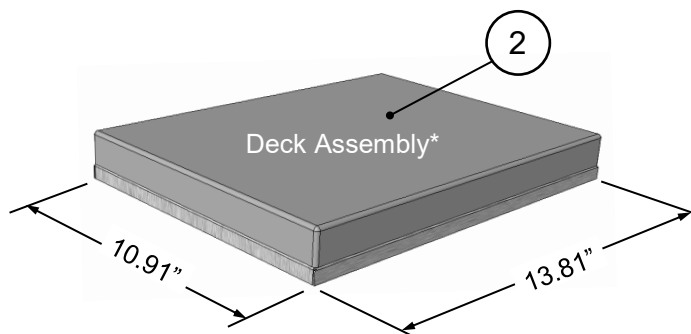
### 2. Deck Assembly Size - Model NE6000R4

- Each deck assembly is 10.91" x 13.81" in size.
- Each deck assembly is created after deck base cover has been attached (via silicone) to deck base.

- Deck assembly placement must coincide with countertop's (work surface's) overall opening size.
- Deck assembly placement **MUST** allow adequate space between deck assemblies **AS WELL AS** between deck assemblies and work surface (countertop).
- See illustration below.



\*Model NE6000R4 shown above. Deck assemblies **MUST** allow adequate space between deck assemblies **AS WELL AS** between deck assemblies and work surface (countertop).





## COUNTERTOP OPENING SIZE / DECK ASSEMBLY SIZE - MODEL NE7200R5 (ONLY)

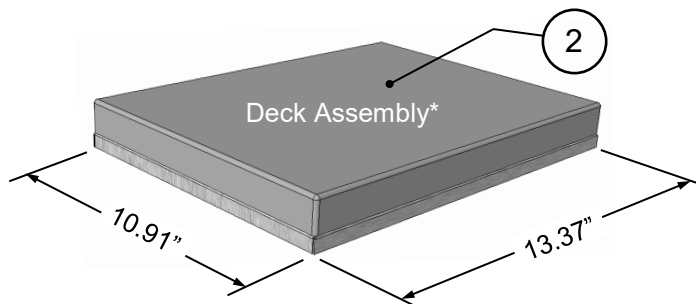
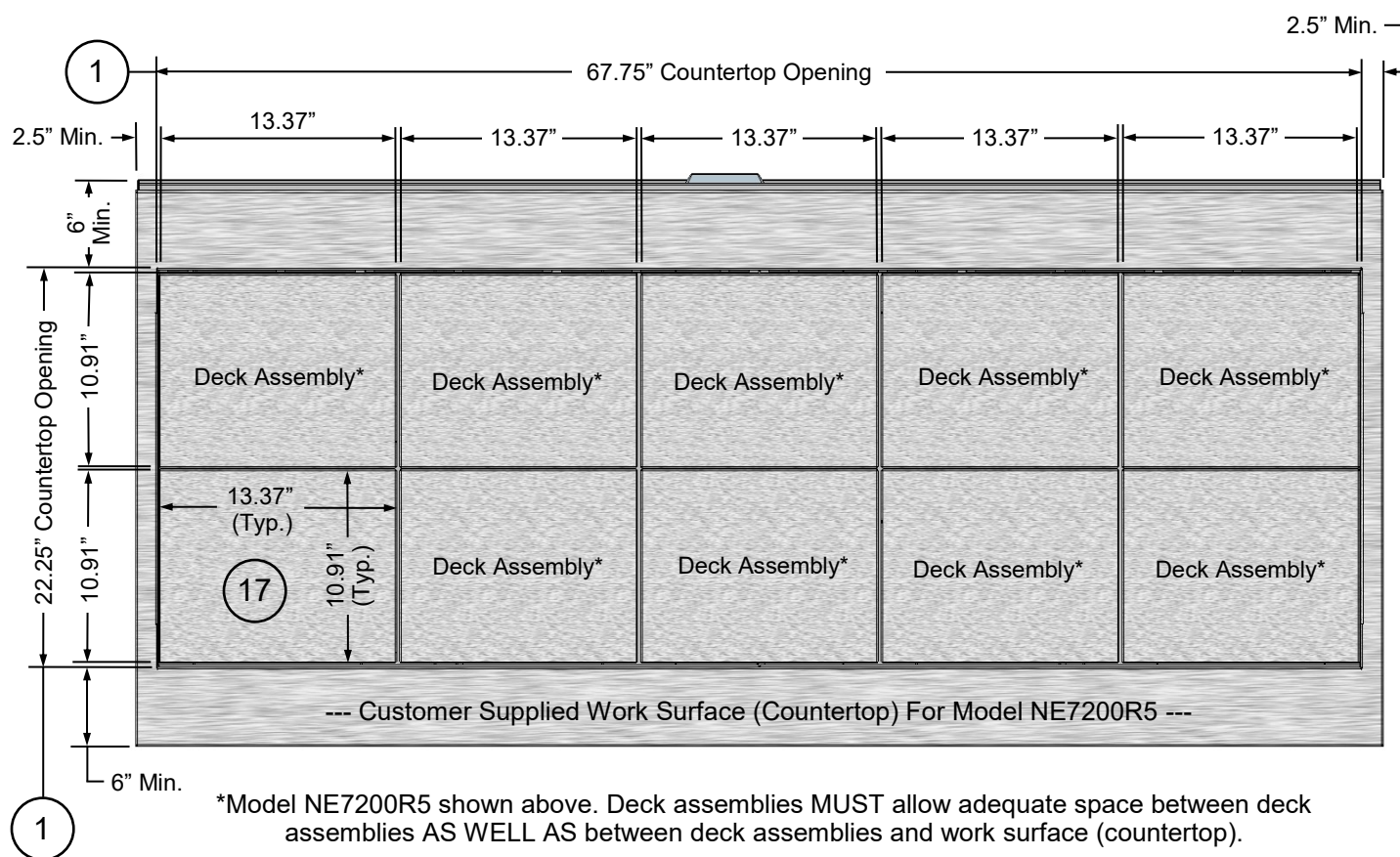
### 1. Countertop Opening Size - Model NE7200R5

- Countertop (work surface) is customer-supplied.
- Overall openings coincide with deck assembly size.

### 2. Deck Assembly Size - Model NE7200R5

- Each deck assembly is 10.91" x 13.37" in size.
- Each deck assembly is created after deck base cover has been attached (via silicone) to deck base.

- Deck assembly placement must coincide with countertop's (work surface's) overall opening size.
- Deck assembly placement **MUST** allow adequate space between deck assemblies **AS WELL AS** between deck assemblies and work surface (countertop).
- See illustration below.



## DECK ASSEMBLY REMOVAL / REPLACEMENT

### Deck Assembly Removal/Replacement

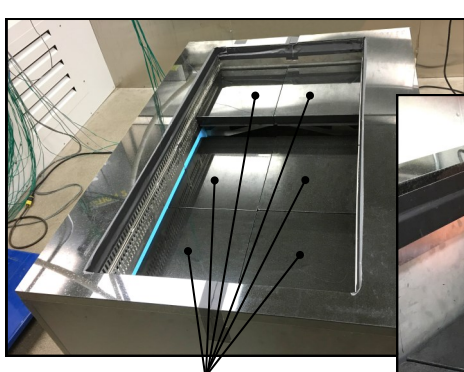
- **Caution! Be careful to avoid pinching fingers while removing deck assemblies from case!**

- A. View of sample case deck assemblies placed at varying heights in well.
- B. Place hands near either front or rear plenum and prepare to apply downward pressure.
- C. Press downward on deck assembly until opposite end is raised (allowing ability to grasp).

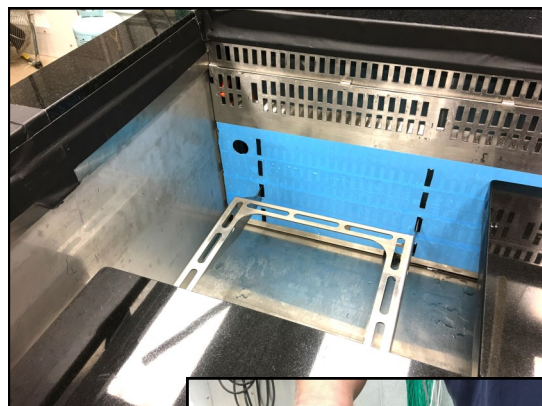
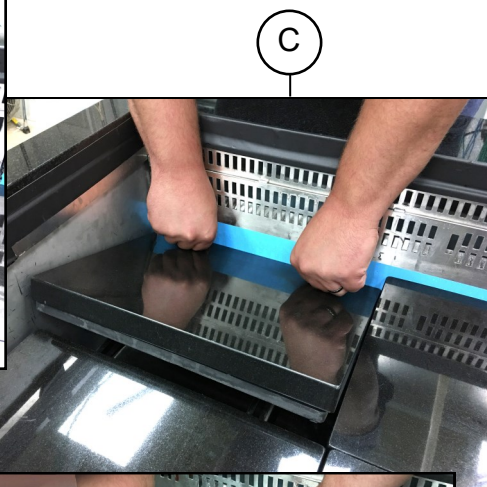
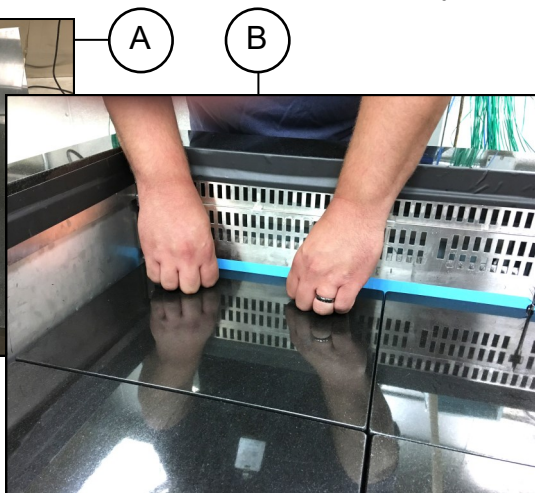
- D. Grasp raised end of deck assembly with one hand (to hold it in raised position).
- E. Grasp deck assembly firmly with second hand.
- F. Lift deck assembly UP AND OUT from case.

- **Caution! Deck assemblies are VERY HEAVY! Hold securely to avoid dropping or scratching countertop surface while removing from case.**

- G. View of case well after removal of deck assembly.
- >> Replace deck assemblies to case well in reverse order they were removed.



Deck Assemblies (Placed At Varying Heights In Well)



G

D

F

E

