

Technical Information

Reveal® - Heated Self-Service Slide In Counter Case

Structural Concepts®

DELIVERING FRESH. ALWAYS.™

DIMENSIONS / SHIPPING				
Model	L"	L1"	L2"	Est Wt (lbs)
NE3620HSSV	N/A	35.750	0.000	N/A
NE4820HSSV	N/A	47.750	0.000	N/A

ELECTRICAL															
Model	System Circuit Volts			Ph	Frq	Rated Load Amps	Min Cir Amps	Max OCP Amps	Watts	Wires	NEMA Plug	Amps Lights	Amps Fans	Amps Anti-Sweats	Amps Misc/Refrig/Heat
NE3620HSSV	Heat (N/A)	Circuit #1	208-240	1	60	12.38	20	20	2,416	2+G	6-20P or L6-20P	0.36	0.35	N/A	11.67
NE4820HSSV	Heat (N/A)	Circuit #1	208-240	1	60	18.14	30	30	3,575	2+G	6-30P or L6-30P	0.36	0.49	17.29	N/A

REFRIGERATION													
Model	Zone	Section	System	Envr	REMOTE REFRIGERATION					GLYCOL / R744 REFRIGERATION			
					SST (°F)	Conv. Rack BTUH	Para. Rack BTUH	Defrost Interval (Hrs)	Defrost Duration	Total GPM	Pressure Drop (psi)	Concent (%)	Liquid Temp (°F)

INTENDED ENVIRONMENT		
Type I - Designed to operate in ambient conditions of 75°F with 55% relative humidity unless noted otherwise under Envt above.		
WARMEST AVERAGE PRODUCT TEMP & INTENDED USE OF ZONES		
Zone	Temp (°F)	Intended Use
1	160	Packaged / unpackaged heated products

IMPORTANT NOTES	
1) ELECTRICAL NOTE: If GFCI is required, a GFCI breaker MUST be used in lieu of a GFCI receptacle.	
2) 19.25" minimum space required beneath counter surface.	
3) Glass warranty only applicable to first point of delivery.	

REGULATORY	
All Models	ETL Listed to UL 197 ETL Listed to CAN/CSA 22.2 No. 109 ETL Sanitation to NSF/ANSI 4

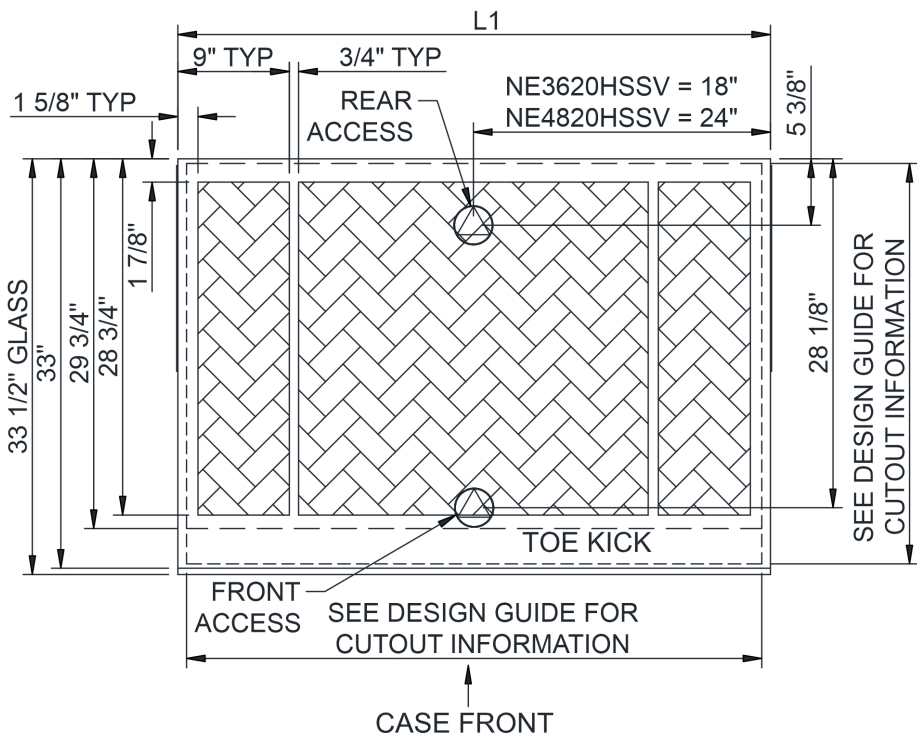
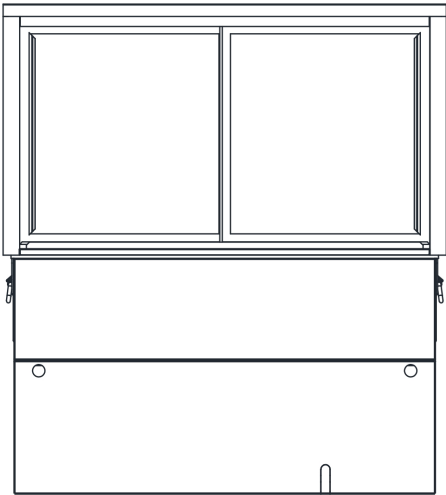
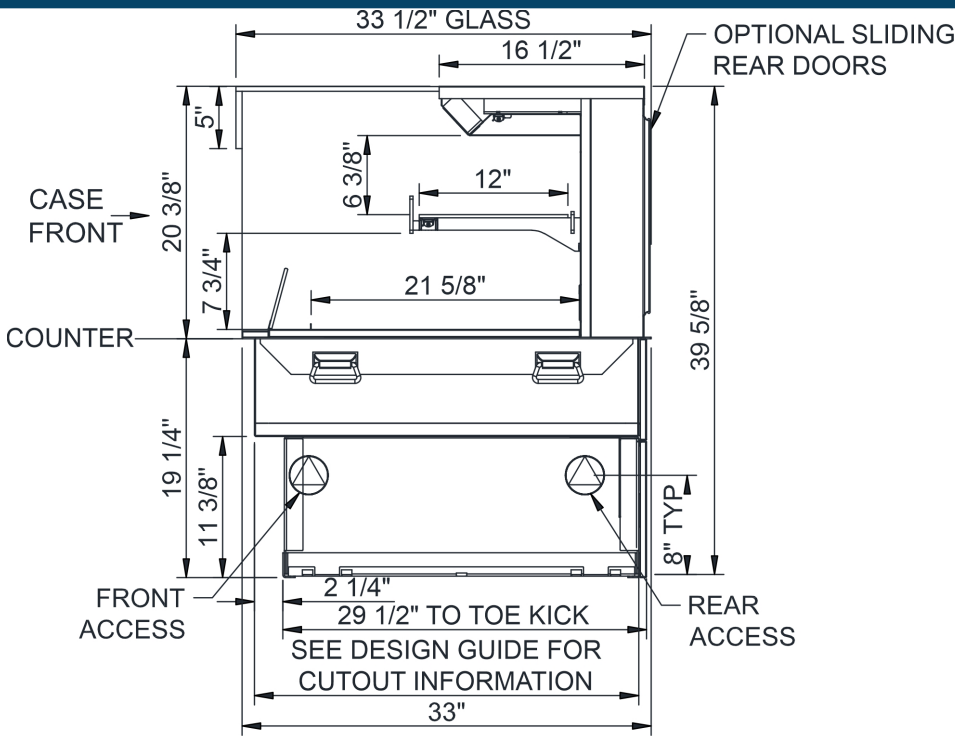


Technical Information

Reveal® - Heated Self-Service Slide In Counter Case

Structural Concepts®

DELIVERING FRESH. ALWAYS.™



NOTE: ALL DIMENSIONS APPROXIMATE

- | | | |
|--|--|---|
|  ELECTRICAL JUNCTION BOX (SUPPLIED WITH 6\"/> |  REFRIGERATION LINE CONNECTION. |  SELF-CONTAINED CASE SERVICE ACCESS AREA. |
|  LOCATION OF DRAIN TUBE FOR REMOTE REF. ONLY (SUPPLIED WITH 3/4\"/> |  REMOTE FLOOR SINK & UTILITIES ACCESS AREA. |  DRY CASE SERVICE ACCESS AREA. |