

# Technical Information

Reveal® - Refrigerated Service Slide In Counter Case

Structural Concepts®

DELIVERING FRESH. ALWAYS.™

## DIMENSIONS / SHIPPING

Model	L"	L1"	L2"	Est Wt (lbs)
NE3635RSV	N/A	35.750	4.125	N/A
NE4835RSV	N/A	47.750	4.125	N/A
NE6035RSV	N/A	59.750	4.125	N/A
NE7235RSV	N/A	71.750	4.125	N/A

## ELECTRICAL

Model	System Circuit Volts			Ph	Frq	Rated Load Amps	Min Cir Amps	Max OCP Amps	Watts	Wires	NEMA Plug	Amps Lights	Amps Fans	Amps Anti-Sweats	Amps Misc/Refrig/Heat
NE3635RSV	Remote (DX)	Circuit #1	110-120	1	60	1.08	15	15	39	2+G	Leads Single	0.70	0.30		0.08
	Remote (GLYCOL)	Circuit #1	110-120	1	60	1.00	15	15	29	2+G	Leads Single	0.70	0.30		N/A
	Remote (DX)	Circuit #1	110-120	1	60	1.08	15	15	39	2+G	Leads Single	0.70	0.30		0.08
	Self-Contained (R513A)	Circuit #1	110-120	1	60	9.76	15	15	769	2+G	5-15P or L5-15P	0.70	0.90	3.96	4.20
NE4835RSV	Remote (DX)	Circuit #1	110-120	1	60	1.08	15	15	46	2+G	Leads Single	0.70	0.30		0.08
	Remote (GLYCOL)	Circuit #1	110-120	1	60	1.00	15	15	36	2+G	Leads Single	0.70	0.30		N/A
	Remote (DX)	Circuit #1	110-120	1	60	1.08	15	15	46	2+G	Leads Single	0.70	0.30		0.08
	Self-Contained (R513A)	Circuit #1	110-120	1	60	9.76	15	15	758	2+G	5-15P or L5-15P	N/A	0.90	3.96	4.90
NE6035RSV	Remote (DX)	Circuit #1	110-120	1	60	1.38	15	15	66	2+G	Leads Single	0.70	0.60		0.08
	Remote (DX)	Circuit #1	110-120	1	60	1.38	15	15	66	2+G	Leads Single	0.70	0.60		0.08
	Self-Contained (R513A)	Circuit #1	110-120	1	60	9.86	15	15	785	2+G	5-15P or L5-15P	0.70	1.20	3.96	4.00
NE7235RSV	Remote (DX)	Circuit #1	110-120	1	60	1.38	15	15	73	2+G	Leads Single	0.70	0.60		0.08
	Remote (GLYCOL)	Circuit #1	110-120	1	60	1.30	15	15	63	2+G	Leads Single	0.70	0.60		N/A
	Remote (DX)	Circuit #1	110-120	1	60	1.38	15	15	73	2+G	Leads Single	0.70	0.60		0.08
	Self-Contained (R513A)	Circuit #1	110-120	1	60	9.86	15	15	792	2+G	5-15P or L5-15P	0.70	1.20	3.96	4.00

## REFRIGERATION

Model	Zone	Section	System	Env't	REMOTE REFRIGERATION					GLYCOL / R744 REFRIGERATION			
					SST (°F)	Conv. Rack BTUH	Para. Rack BTUH	Defrost Interval (Hrs)	Defrost Duration	Total GPM	Pressure Drop (psi)	Concent (%)	Liquid Temp (°F)
NE3635RSV	All	Refrigerator	Remote-DX	Type II	20	1,188	1,100	4.00	30.00	N/A	N/A	N/A	N/A
	All	Main	Self-Contained-R513A	Type II	N/A	N/A	N/A	N/A	N/A	N/A	N/A	N/A	N/A
	All	Main	Remote-Glycol	Type II	N/A	1,188	1,100	4.00	45.00	0.30	0.30	35%	20.00
	All	Refrigerator	Remote-DX	Type I	20	1,058	980	4.00	30.00	N/A	N/A	N/A	N/A
NE4835RSV	All	Refrigerator	Remote-DX	Type II	20	1,534	1,420	4.00	30.00	N/A	N/A	N/A	N/A
	All	Refrigerator	Remote-Glycol	Type II	N/A	1,534	1,420	4.00	45.00	0.25	1.55	35%	20.00
	All	Main	Self-Contained-R513A	Type II	N/A	N/A	N/A	N/A	N/A	N/A	N/A	N/A	N/A
	All	Refrigerator	Remote-DX	Type I	20	1,361	1,260	4.00	30.00	N/A	N/A	N/A	N/A
NE6035RSV	All	Refrigerator	Remote-DX	Type II	24	1,879	1,740	4.00	25.00	N/A	N/A	N/A	N/A
	All	Main	Self-Contained-R513A	Type II	N/A	N/A	N/A	N/A	N/A	N/A	N/A	N/A	N/A
	All	Refrigerator	Remote-DX	Type I	24	1,663	1,540	4.00	25.00	N/A	N/A	N/A	N/A
NE7235RSV	All	Refrigerator	Remote-DX	Type II	20	2,203	2,040	4.00	30.00	N/A	N/A	N/A	N/A
	All	Main	Self-Contained-R513A	Type II	N/A	N/A	N/A	N/A	N/A	N/A	N/A	N/A	N/A
	All	Main	Remote-Glycol	Type II	N/A	2,203	2,040	4.00	45.00	0.50	1.00	35%	20.00
	All	Refrigerator	Remote-DX	Type I	20	1,966	1,820	4.00	30.00	N/A	N/A	N/A	N/A

# Technical Information

Reveal® - Refrigerated Service Slide In Counter Case

Structural Concepts®

DELIVERING FRESH. ALWAYS.™

## INTENDED ENVIRONMENT

Type II - Designed to operate in ambient conditions of 80°F and 55% relative humidity unless noted otherwise under Env't above.

## WARMEST AVERAGE PRODUCT TEMP & INTENDED USE OF ZONES

Zone	Temp (°F)	Intended Use
1	40	Unpackaged refrigerated products

## IMPORTANT NOTES

- 1) ELECTRICAL NOTE: If GFCI is required, a GFCI breaker MUST be used in lieu of a GFCI receptacle
- 2) Verify ventilation requirements for your installation by referring to the Design guide located in our Foodservice Resource Library at structuralconcepts.com.
- 3) Rear Access Standard - Counter must be configured to allow air to be drawn in the rear and discharged out the front.
- 4) Front Access Option - Counter must be configured to allow air to be drawn in the front and discharged out the rear.
- 5) Unit can intake and discharge from rear with optional rear vented panel.
- 6) 19.25" minimum space required beneath counter surface.
- 7) Due to DOE regulations, the maximum counter height on this model is 30".
- 8) Glass warranty only applicable to first point of delivery.

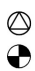

## REGULATORY

All Models	Accordance with AHRI Std 1200 ETL Listed to UL 471 ETL Listed to CAN/CSA 22.2 No. 120 ETL Sanitation to NSF/ANSI 7
------------	---



In Accordance with  
**AHRI Std 1200**

NOTE: ALL DIMENSIONS APPROXIMATE

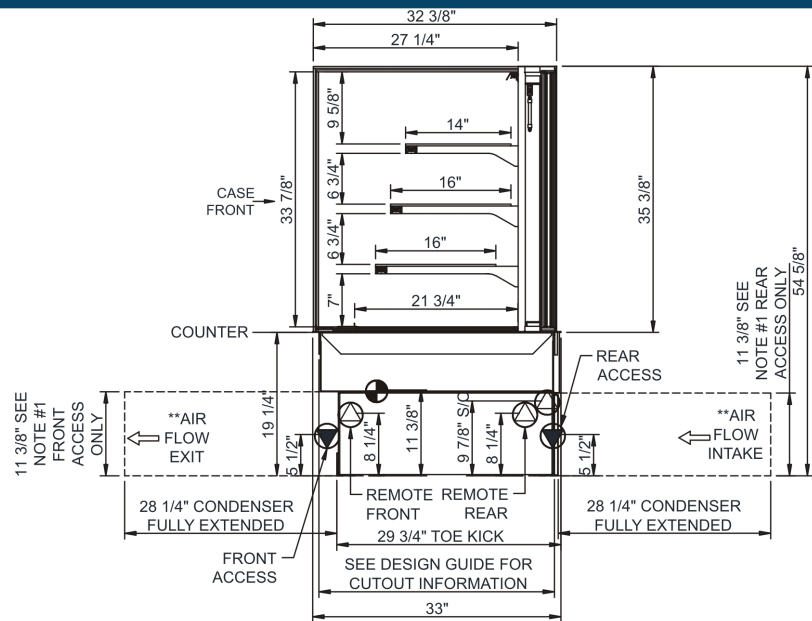
 ELECTRICAL JUNCTION BOX  
(SUPPLIED WITH 6" LEADS OR POWER CORD).  
 LOCATION OF DRAIN TUBE FOR REMOTE REF.  
ONLY (SUPPLIED WITH 3/4" OR 1 1/2" PVC TUBE).

 REFRIGERATION LINE CONNECTION.  
 REMOTE FLOOR SINK & UTILITIES  
ACCESS AREA.

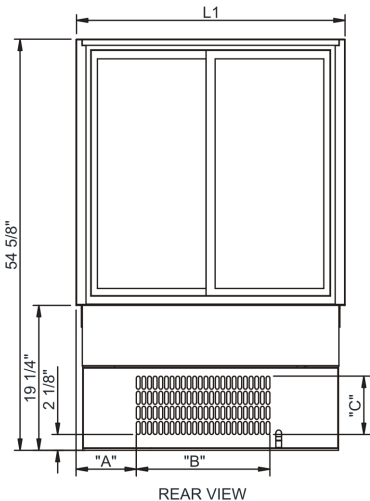
 SELF-CONTAINED CASE SERVICE ACCESS AREA.  
 DRY CASE SERVICE ACCESS AREA.

Technical Information

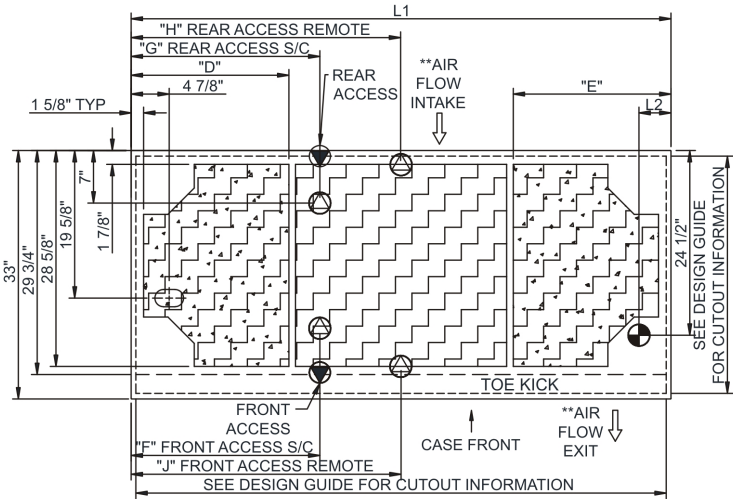
Reveal® - Refrigerated Service Slide In Counter Case



- NOTES:
1. 11 3/8" TALL, FULL WIDTH OF CASE OPENING IN CABINET OR COUNTER IS REQUIRED TO PULL OUT REFRIGERATION SYSTEM.
  2. SEE DESIGN GUIDE FOR CUTOUT SIZE IN CABINET FOR CASE TO DROP INTO.
  3. BACK OF COUNTER / CABINET MUST BE VENTED PROPERLY FOR ADEQUATE AIRFLOW TO CONDENSER.
  4. \*\*REPRESENTS REAR PULLOUT REFRIGERATION. AIR FLOW INTAKE AND EXIT DETAILS ARE REVERSED WITH FRONT PULLOUT REFRIGERATION OPTION.
  5. SELF-CONTAINED ACCESS ONLY BY PULLING OUT CONDENSER UNIT.
  6. SEE "COUNTER INSTALLATION GUIDE" FOR AIR FLOW REQUIREMENTS.



	"A"	"B"	"C"
NE3635RSV	8"	17 3/4"	7 3/4"
NE4835RSV	14"	17 3/4"	7 3/4"
NE6035RSV	26"	17 3/4"	7 3/4"
NE7235RSV	26"	17 3/4"	7 3/4"



	"D"	"E"	"F"	"G"	"H"	"J"
NE3635RSV	N/A	N/A	7"	7"	17 7/8"	17 7/8"
NE4835RSV	9"	9"	12 3/4"	12 3/4"	23 7/8"	23 7/8"
NE6035RSV	9"	21"	12 3/4"	24 3/4"	29 7/8"	29 7/8"
NE7235RSV	21"	21"	25 1/8"	25 1/8"	35 7/8"	35 7/8"

NOTE: ALL DIMENSIONS APPROXIMATE

- ELECTRICAL JUNCTION BOX (SUPPLIED WITH 6" LEADS OR POWER CORD).
- REFRIGERATION LINE CONNECTION.
- SELF-CONTAINED CASE SERVICE ACCESS AREA.
- LOCATION OF DRAIN TUBE FOR REMOTE REF. ONLY (SUPPLIED WITH 3/4" OR 1 1/2" PVC TUBE).
- REMOTE FLOOR SINK & UTILITIES ACCESS AREA.
- DRY CASE SERVICE ACCESS AREA.