

Fusion

GHS 56"H Refrigerated Service Case w/ Curved Glass

Structural Concepts®

DELIVERING FRESH. ALWAYS.™

(Lengths do not include 1-1/8" end panels)

- **GHS456RLB** 48-3/4"L x 42-3/4"D x 55-1/4"H
- **GHS556RLB** 60-5/8"L x 42-3/4"D x 55-1/4"H
- **GHS656RLB** 73-1/8"L x 42-3/4"D x 55-1/4"H
- **GHS856RLB** 97-1/2"L x 42-3/4"D x 55-1/4"H
- **GHS1056RLB** 121-1/8"L x 42-3/4"D x 55-1/4"H
- **GHS1256RLB** 146-1/4"L x 42-3/4"D x 55-1/4"H

Included

- Curved lift-up front glass
- Integrated average product temperature of 40°F or less
- LED top & shelf lights
- One year parts & labor warranty
- Remote DX refrigeration
- Stainless steel rear exterior



GHS456RLB

Specify	Standard Features	Additional Options
EXTERIOR COLOR	• Laminate (stock colors)	• Laminate (non-stock colors) • Powder coated (stock/non-stock colors) • Powder coated Silversan Black • Stainless steel
INTERIOR COLOR	• Powder coated Silversan Black	• Stainless steel
LOWER FRONT PANEL COLOR	• Powder coated Silversan Black	• Powder coated (stock/non-stock colors) • Stainless steel
BASE SUPPORT	• Rail system for shims	
BUMPER FRONT	• 1" Boston bumper (specify color)	• 1" Stainless steel plate rail bumper
END PANELS	• Full w/stainless steel mirror interior	• Cutaway w/glass • None (specify per line-up)
SCALE STAND	• None	• Scale stand w/ receptacle & CAT5 (specify location) • Scale stand w/ receptacle (specify location)
PRICE TAG MOLDING	• None	• 1" Price tag molding (black or silver) • Universal price tag molding (clear w/ open top)
REAR DOORS	• Clear glass rear sliding doors	• Reflective glass rear sliding doors
SHELVING	• 16" & 20" & 20" Solid shelving	• 16" & 18" & 20" & 20" Glass shelving • 16" & 18" & 20" & 20" Solid shelving • 16" & 20" & 20" Glass shelving
LIGHTS	• LED 3500K w/ frosted lens	• LED 4000K w/ frosted lens
ELECTRICAL CONNECTION	• Electrical leads (remote)	
REFRIGERATION	• Remote DX refrigeration	• Remote w/thermostat, solenoid & TXV
SENSOR	• None	• CPC discharge air sensor (remote)
MISCELLANEOUS		• Front glass lock • Rear door lock
ACCESSORIES		• Drain strainer

Option Notes: 1 - Separate circuit required

GHS 56"H Refrigerated Service Case w/ Curved Glass

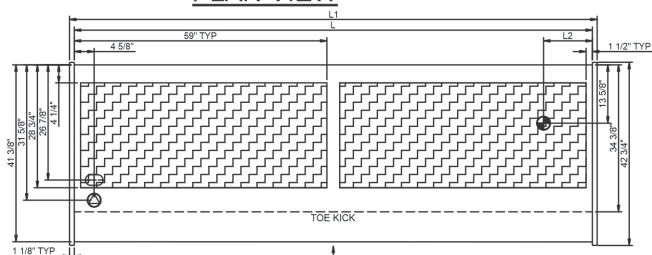
Structural Concepts®

DELIVERING FRESH. ALWAYS.™

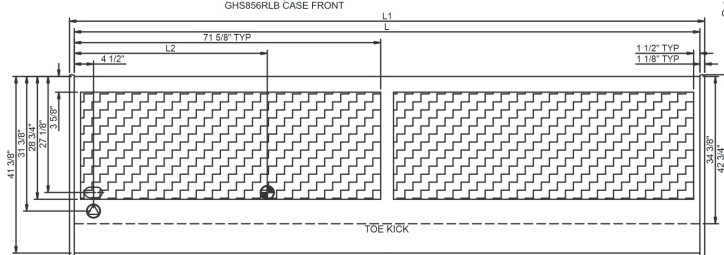
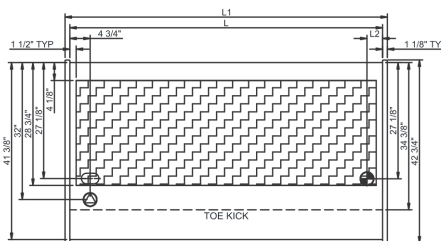
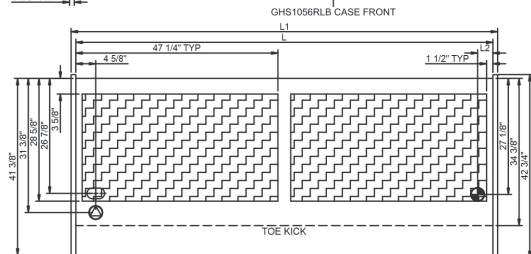
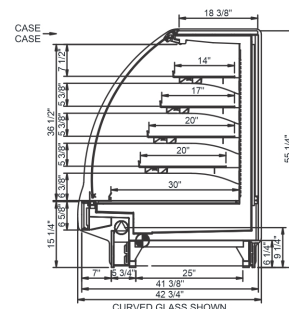
Intended Environment: Type I - Designed to operate in ambient conditions of 75°F with 55% relative humidity unless noted otherwise in system information below.

Zone	Intended Product To Be Displayed	Warmest Avg Prod Temp ° F
1	Unpackaged refrigerated products	40

PLAN VIEW



SIDE VIEW



NOTE: ALL DIMENSIONS APPROXIMATE



ELECTRICAL JUNCTION BOX
(SUPPLIED WITH 6" LEADS OR POWER CORD)



LOCATION OF DRAIN TUBE FOR REMOTE REF. ONLY (SUPPLIED WITH $\frac{3}{4}$ " OR $1\frac{1}{2}$ " PVC TUBE).



➤ **REFRIGERATION LINE CONNECTION.**



REMOTE FLOOR SINK & UTILITIES ACCESS AREA.



SELF-CONTAINED CASE SERVICE ACCESS AREA.



DRY CASE SERVICE ACCESS AREA.

Model Technical Specifications

Model	L"	L1"	L2"	System Circuit Volts			Phs	Freq	Amps ***	Watts	Wires	NEMA Plug	SST	Conv. Rack BTU/H	Para. Rack BTU/H	Est Wt
GHS456RLB	48.75	51.00	3.63	Remote (DX)	Circuit #1	110-120	1	60	2.66	251	2+G	Leads Multiple	20.00	1793	1660	92
GHS556RLB	60.63	62.88	3.63	Remote (DX)	Circuit #1	110-120	1	60	2.92	149	2+G	Leads Multiple	20.00	2138	1980	1,00
GHS656RLB	73.13	75.38	3.63	Remote (DX)	Circuit #1	110-120	1	60	3.66	156	2+G	Leads Multiple	20.00	2722	2520	1,05
				Remote (GLYCOL 35%)	Circuit #1	110-120	1	60	3.66	156	2+G	Leads Multiple	20.00	2722	2520	
				Remote (R744 TRANSCRIT	Circuit #1	110-120	1	60	3.66	79	2+G	Leads Multiple		2722	2520	
				Remote (DX)	Circuit #1	110-120	1	60	4.47	197	2+G	Leads Multiple	20.00	3456	3200	1,40
GHS856RLB	97.50	99.75	3.63	Remote (GLYCOL 35%)	Circuit #1	110-120	1	60	3.06	182	2+G	Leads Multiple	20.00	3348	3100	
GHS1056RLB	121.13	123.38	11.38	Remote (DX)	Circuit #1	110-120	1	60	5.84	267	2+G	Leads Multiple	20.00	4234	3920	1,50
GHS1256RLB	146.25	148.50	45.13	Remote (DX)	Circuit #1	110-120	1	60	5.65	296	2+G	Leads Multiple	20.00	5011	4640	1,50
				Remote (GLYCOL 35%)	Circuit #1	110-120	1	60	6.38	549	2+G	Leads Multiple	20.00	5011	4640	

*** Does not include electric defrost on freezer models.

Regulatory Approvals:

All Models	<p>Accordance with AHRI Std 1200</p> <p>ETL Listed to UL 471</p> <p>ETL Listed to CAN/CSA 22.2 No. 120</p> <p>ETL Sanitation to NSF/ANSI 7</p>
------------	--



In Accordance with
AHRI Std 1200

DOE 2017
Energy Efficiency
Compliant

Important Notes:

- 1) ELECTRICAL NOTE: If GFCI is required, a GFCI breaker MUST be used in lieu of a GFCI receptacle.
- 2) 45" minimum door entry clearance required (without shipping skid).
- 3) Units must be shimmed during installation to ensure the unit is level and plumb.

⚠️ WARNING: This product can expose you to chemicals, including Urethane (Ethyl Carbamate), which are known to the State of California to cause cancer and birth defects or other reproductive harm. For more information go to www.P65Warnings.ca.gov.